

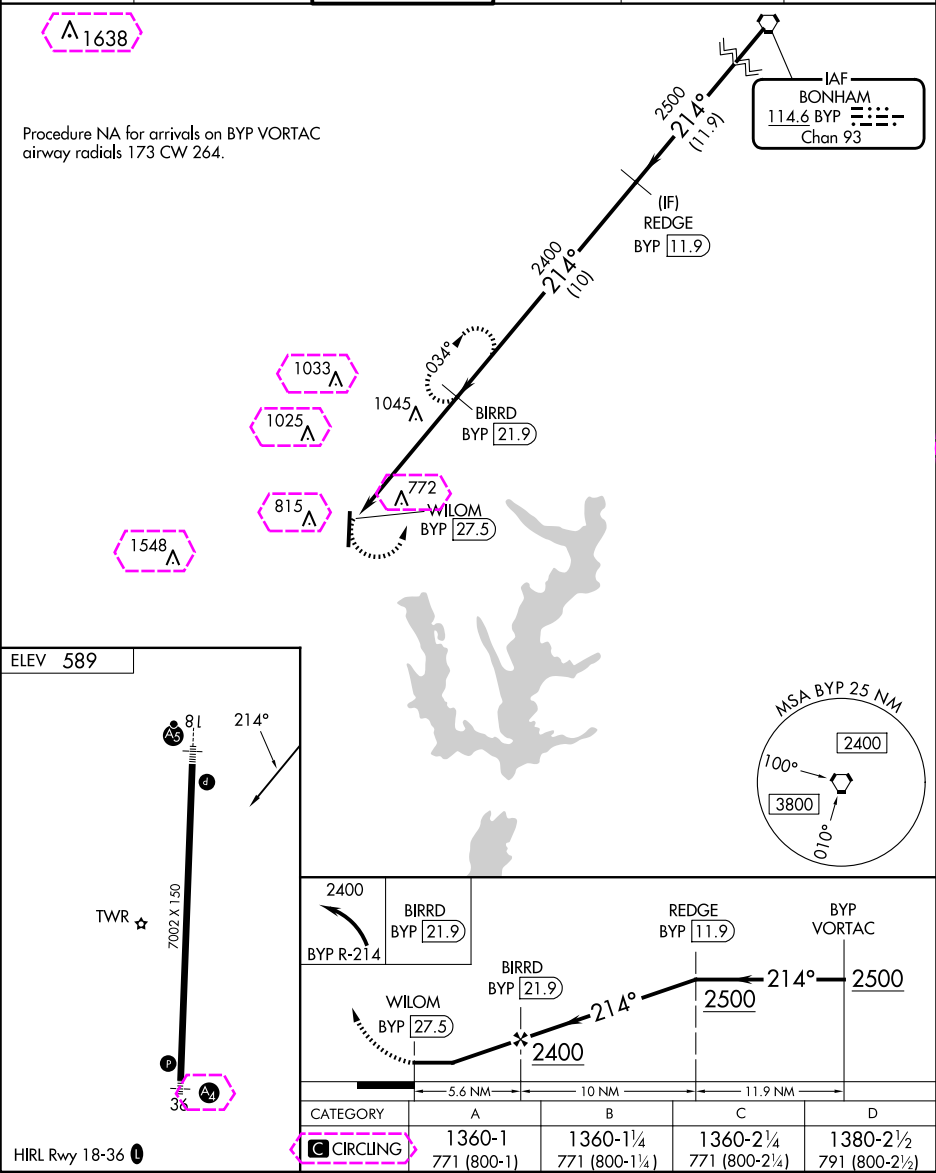
▼

When local altimeter setting not received use Dallas Love Fld altimeter setting and increase all MDA 80 feet and Cats C and D visibility 1/4 mile.

▲

MISSED APPROACH: Climbing left turn to 2400 on BYP VORTAC R-214 to BIRRD/BYP 21.9 DME and hold.

ATIS 119.925	LONE STAR APP CON 124.3 282.275	MC KINNEY TOWER ★ 118.825 (CTAF) 0	GND CON 121.875	CLNC DEL 121.35 (When twr closed)	UNICOM 122.95
-----------------	------------------------------------	---------------------------------------	--------------------	---	------------------



DALLAS, TEXAS

AL-6644 (FAA)

25219

VORTAC BYP <b>114.6</b> Chan <b>93</b>	APP CRS <b>214°</b>	Rwy Ldg TDZE Apt Elev <b>589</b>	<b>N/A</b> <b>N/A</b>
--	------------------------	---	--------------------------

**VOR/DME-A**  
MCKINNEY NTL (TKI)

▼ When local altimeter setting not received use Dallas Love Fld  
▲ altimeter setting and increase all MDA 80 feet and Cats C and D  
visibility ¼ mile.

MISSED APPROACH: Climbing left turn to 2400 on  
BYP VORTAC R-214 to BIRRD/BYP 21.9 DME and hold.

ATIS <b>119.925</b>	LONE STAR APP CON <b>124.3 282.275</b>	MC KINNEY TOWER ★ <b>118.825</b> (CTAF) <b>0</b>	GND CON <b>121.875</b>	CLNC DEL <b>121.35</b> (When twr closed)	UNICOM <b>122.95</b>
------------------------	---	---	---------------------------	--	-------------------------

Procedure NA for arrivals on BYP VORTAC  
airway radials 173 CW 264.

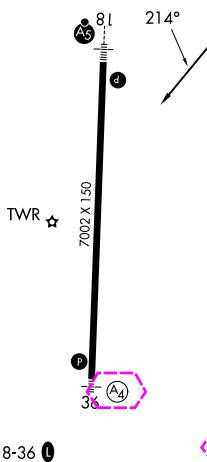
IAF  
BONHAM  
114.6 BYP  
Chan 93

(IF)  
REDGE  
BYP 11.9

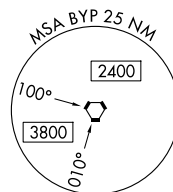
1045  
BIRRD  
BYP 21.9

WILOM  
BYP 27.5

ELEV 589



HIRL Rwy 18-36



<p>2400 BYP R-214 BIRRD BYP 21.9 REDGE BYP 11.9 BYP VORTAC WILOM BYP 27.5 BIRRD BYP 21.9 2400 214° 2500 2500 5.6 NM 10 NM 11.9 NM CATEGORY A B C D CIRCLING 1360-1 771 (800-1) 1360-1¼ 771 (800-1¼) 1360-2¼ 771 (800-2¼) 1380-2½ 791 (800-2½)</p>				
CATEGORY	A	B	C	D
CIRCLING	1360-1 771 (800-1)	1360-1¼ 771 (800-1¼)	1360-2¼ 771 (800-2¼)	1380-2½ 791 (800-2½)

DALLAS, TEXAS  
Amdt 2B 26MAR20

33°11'N-96°35'W

MCKINNEY NTL (TKI)  
**VOR/DME-A**

SC-2, 07 AUG 2025 to 04 SEP 2025

SC-2, 07 AUG 2025 to 04 SEP 2025