

DALLAS, TEXAS

AL-6644 (FAA)

25163

WAAS CH <b>49202</b> <b>W36A</b>	APP CRS <b>359°</b>	Rwy Ldg TDZE <b>589</b> Apt Elev <b>589</b>
----------------------------------------	------------------------	---------------------------------------------------------

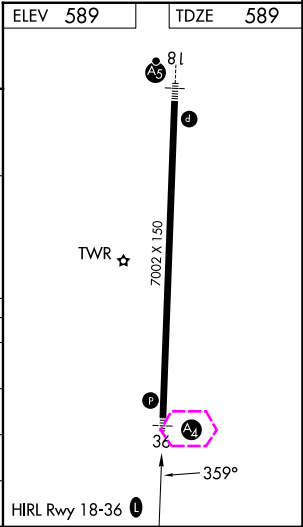
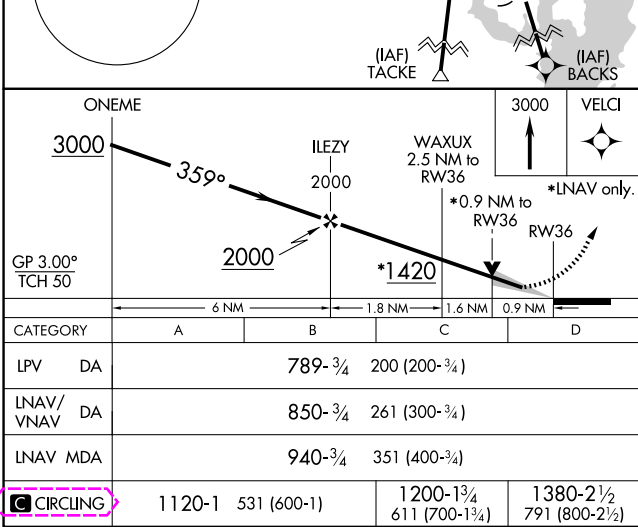
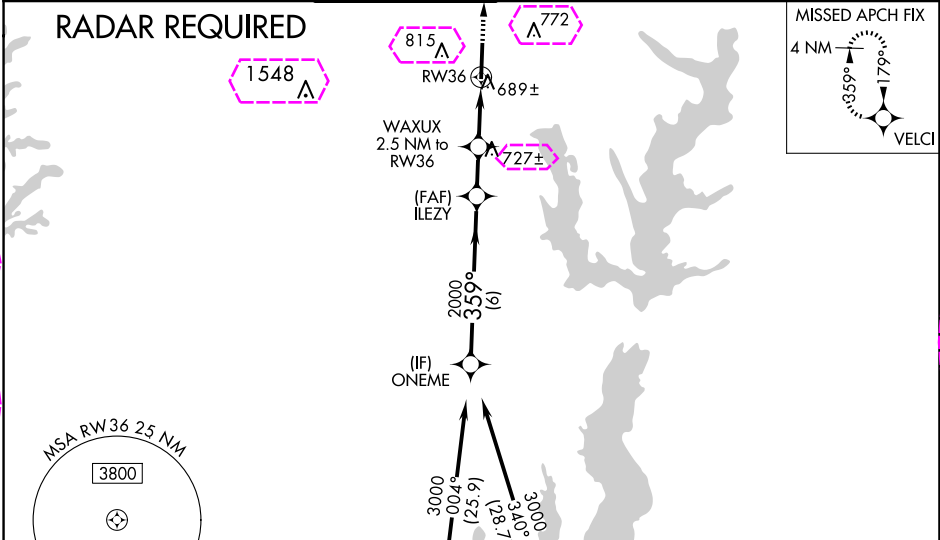
**RNAV (GPS) RWY 36**  
MCKINNEY NTL (TKI)

⚠ For uncompensated Baro-VNAV systems, LNAV/VNAV NA below -8°C (18°F) or above 54°C (130°F). When local altimeter setting not received, use Dallas Love Fld altimeter setting and increase all DA 70 feet and all MDA 80 feet, and increase LNAV/VNAV all Cats visibility 1/8 mile, LNAV Cat C/D and Circling Cat C/D visibility 1/4 mile.  
DME/DME RNP-0.3 NA. VDP and Baro-VNAV NA when using Dallas Love Fld altimeter setting. For inop MALS increase LNAV/VNAV all Cats visibility to 3/8 mile and LNAV Cat D visibility to 1 mile. For inop MALS when using Dallas Love Fld altimeter setting increase LPV all Cats visibility to 3/8 mile, LNAV/VNAV Cat D visibility to 1 1/8 mile, and LNAV Cat D visibility to 1 1/4 mile. Inop table does not apply to LPV all Cats.

MALS

MISSED APPROACH:  
Climb to 3000 direct  
VELCI and hold.

ATIS <b>119.925</b>	LONE STAR APP CON <b>124.3 282.275</b>	MC KINNEY TOWER ★ <b>118.825 (CTAF) 0</b>	GND CON <b>121.875</b>	CLNC DEL <b>121.35</b> (When twr closed)	UNICOM <b>122.95</b>
------------------------	-------------------------------------------	----------------------------------------------	---------------------------	------------------------------------------------	-------------------------



CATEGORY	A	B	C	D
LPV DA		789-3/4	200 (200-3/4)	
LNAV/VNAV DA		850-3/4	261 (300-3/4)	
LNAV MDA		940-3/4	351 (400-3/4)	
CIRCLING	1120-1	531 (600-1)	1200-1 1/4 611 (700-1 1/4)	1380-2 1/2 791 (800-2 1/2)

DALLAS, TEXAS

Amdt 3B 23JUN16

33°11'N-96°35'W

MCKINNEY NTL (TKI)  
**RNAV (GPS) RWY 36**

DALLAS, TEXAS

AL-6644 (FAA)

25219

WAAS CH <b>49202</b> <b>W36A</b>	APP CRS <b>359°</b>	Rwy Ldg TDZE <b>589</b> Apt Elev <b>589</b>
----------------------------------------	------------------------	---------------------------------------------------------

# RNAV (GPS) RWY 36

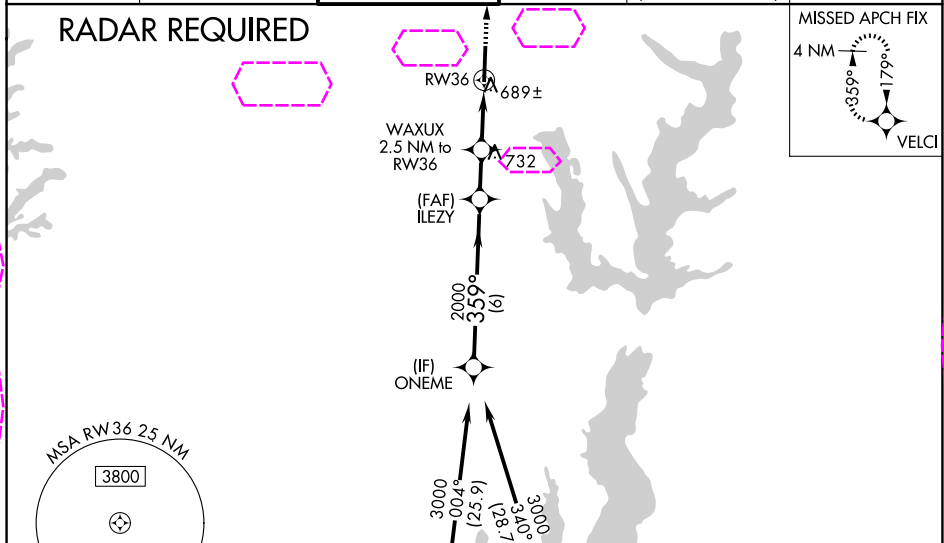
MCKINNEY NTL (TKI)

⚠ For uncompensated Baro-VNAV systems, LNAV/VNAV NA below -8°C (18°F) or above 54°C (130°F). When local altimeter setting not received, use Dallas Love Fld altimeter setting and increase all DA 70 feet and all MDA 80 feet, and increase LNAV/VNAV all Cats visibility 1/8 mile, LNAV Cat C/D and Circling Cat C/D visibility 1/4 mile.  
DME/DME RNP-0.3 NA. VDP and Baro-VNAV NA when using Dallas Love Fld altimeter setting. For inop MALS increase LNAV/VNAV all Cats visibility to 3/8 mile and LNAV Cat D visibility to 1 mile. For inop MALS when using Dallas Love Fld altimeter setting increase LPV all Cats visibility to 3/8 mile, LNAV/VNAV Cat D visibility to 1 1/8 mile, and LNAV Cat D visibility to 1 1/4 mile. Inop table does not apply to LPV all Cats.

MALS  
(A4)

MISSED APPROACH:  
Climb to 3000 direct  
VELCI and hold.

ATIS <b>119.925</b>	LONE STAR APP CON <b>124.3 282.275</b>	MC KINNEY TOWER ★ <b>118.825</b> (CTAF) <b>0</b>	GND CON <b>121.875</b>	CLNC DEL <b>121.35</b> (When twr closed)	UNICOM <b>122.95</b>
------------------------	-------------------------------------------	-----------------------------------------------------	---------------------------	------------------------------------------------	-------------------------



ELEV 589		TDZE 589	
ONEME		VELCI	
3000		3000	
359°		340°	
2000		2000	
1420		1420	
6 NM		1.8 NM	
1.6 NM		0.9 NM	
CATEGORY	A	B	C
LPV DA		789-3/4	200 (200-3/4)
LNAV/VNAV DA		850-3/4	261 (300-3/4)
LNAV MDA		940-3/4	351 (400-3/4)
CIRCLING	1120-1	531 (600-1)	

DALLAS, TEXAS

Amdt 3B 23JUN16

33°11'N-96°35'W

MCKINNEY NTL (TKI)

# RNAV (GPS) RWY 36