

DALLAS, TEXAS

AL-6644 (FAA)

25219

WAAS CH 87102 W18A	APP CRS 179°	Rwy Ldg TDZE 576 Apt Elev 589
--	------------------------	---

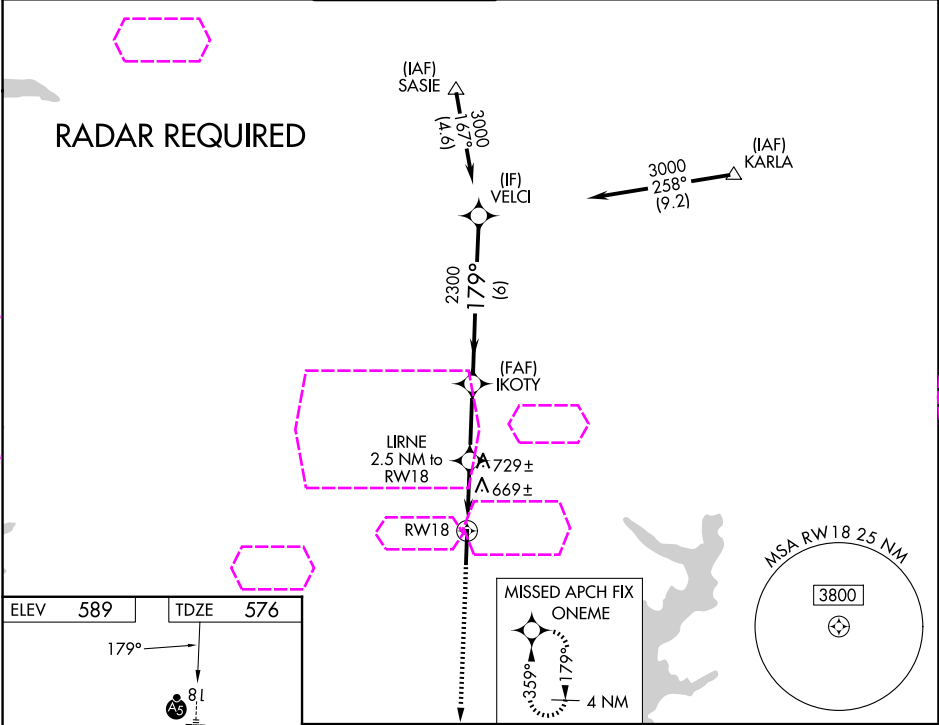
RNAV (GPS) RWY 18
MCKINNEY NTL (TKI)

⚠ DME/DME RNP-0.3 NA. VDP NA with Dallas Love Fld altimeter setting. When local altimeter setting not received, use Dallas Love Fld altimeter setting and increase all DA 70 feet and all MDA 80 feet, increase LNAV Cats C and D ½ mile, and Circling Cats C and D visibility ½ mile. For inop MALSR when using Dallas Love Fld altimeter setting increase LPV all Cats visibility to 1 mile.

MALSR

MISSED APPROACH:
Climb to 3000 direct ONEME and hold.

ATIS 119.925	LONE STAR APP CON 124.3 282.275	MC KINNEY TOWER ★ 118.825 (CTAF) 0	GND CON 121.875	CLNC DEL 121.35 (When twr closed)	UNICOM 122.95
------------------------	---	---	---------------------------	--	-------------------------



DALLAS, TEXAS
Amdt 2C 26MAR20

33°11'N-96°35'W

RNAV (GPS) RWY 18

MCKINNEY NTL (TKI)

SC-2, 07 AUG 2025 to 04 SEP 2025

SC-2, 07 AUG 2025 to 04 SEP 2025