

MCKINNEY NTL (TKI)
ILS or LOC RWY 18

SC-2, 10 JUL 2025 to 07 AUG 2025


DALLAS, TEXAS

AL-6644 (FAA)

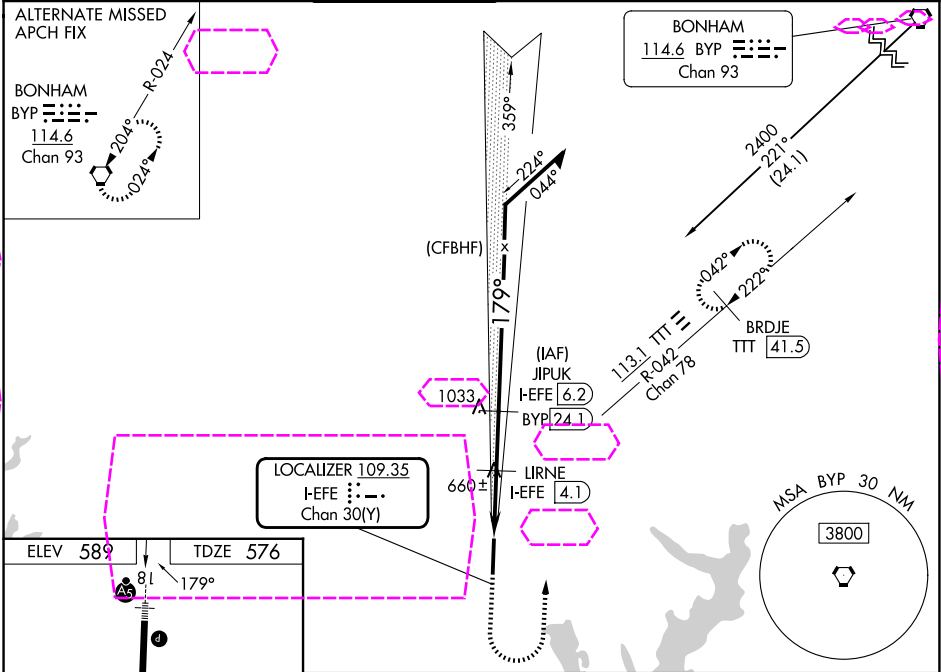
25219

LOC/DME I-EFE 109.35 Chan 30(Y)	APP CRS 179°	Rwy Ldg TDZE Apt Elev 7002 576 589
---	------------------------	--

ILS or LOC RWY 18
MCKINNEY NTL (TKI)

DME required for procedure entry. DME required.		<div>MALSR</div> <div></div>	MISSED APPROACH: Climb to 1500 then climbing left turn to 2400 on heading 360° and on TTT VOR/DME R-042 to BRDJE/TTT 41.5 DME and hold.
▼ VDP NA when using Dallas Love Fld altimeter setting. When local altimeter setting not received, use Dallas Love Fld altimeter setting and increase all DA 70 feet and all MDA 80 feet, increase S-LOC 18 Cats C/D visibility ½ SM, increase Circling visibility Cat C ½ SM, Cat D ¼ SM. For inop ALS, increase S-LOC 18 Cats C/D visibility to 1 SM. For inop ALS when using Dallas Love Fld altimeter setting, increase S-ILS 18 all Cats visibility to ½ SM and increase S-LOC 18 Cats C/D to 1 ¼ SM.			

ATIS 119.925	LONE STAR APP CON 124.3 282.275	MCKINNEY TOWER ★ 118.825(CTAF) 0	GND CON 121.875	CLNC DEL 121.35 (When twr closed)	UNICOM 122.95
------------------------	---	--	---------------------------	--	-------------------------



ELEV 589 TDZE 576		1500 2400		TTT R-042		BRDJE TTT 41.5		JIPUK I-EFE 6.2		Remain within 10 NM	
*LOC only.		IRNE I-EFE 4.1		2100		359°		2400		179°	
1420*		2100		GS 3.00°		TCH 53					
0.9 1.6 2.1 NM											
CATEGORY		A		B		C		D			
S-ILS 18		776-½		200 (200-½)							
S-LOC 18		920-½ 344 (400-½)		920-½ 344 (400-½)							
CIRCLING		1040-1 451 (500-1)		1120-1 531 (600-1)		1200-1¾ 611 (700-1¾)		1380-2½ 791 (800-2½)			

DALLAS, TEXAS
Amdt 6A 26MAR20

33°11'N-96°35'W

MCKINNEY NTL (TKI)
ILS or LOC RWY 18

SC-2, 07 AUG 2025 to 04 SEP 2025

SC-2, 07 AUG 2025 to 04 SEP 2025