

FRIDAY HARBOR, WASHINGTON

AL-6598 (FAA)

25163

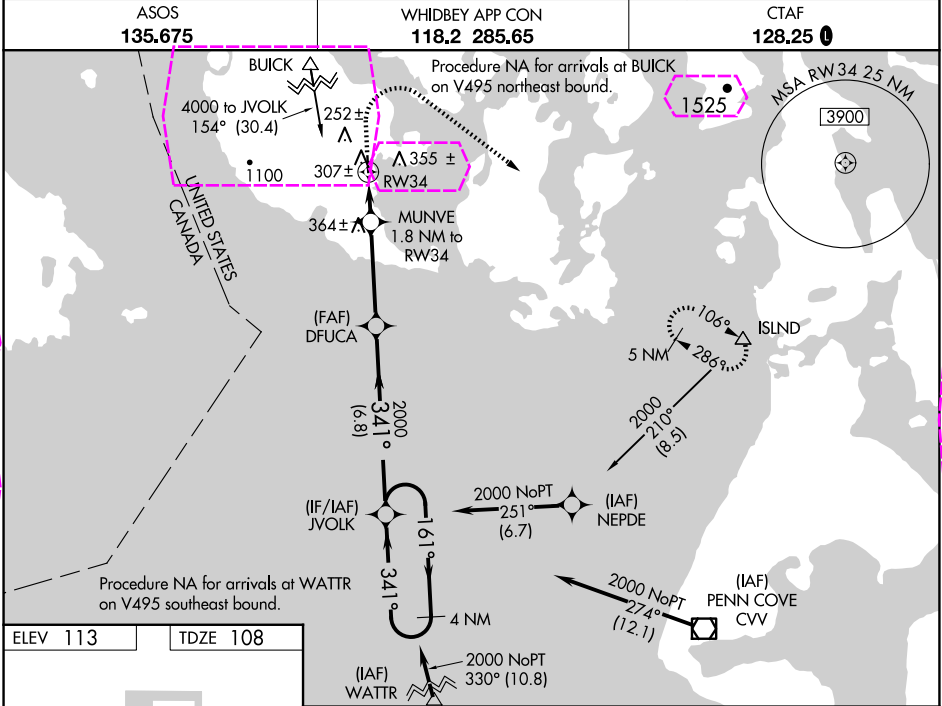
WAAS CH 40024 W34A	APP CRS 341°	Rwy Ldg TDZE 108 Apt Elev 113
--	------------------------	---

RNAV (GPS) RWY 34

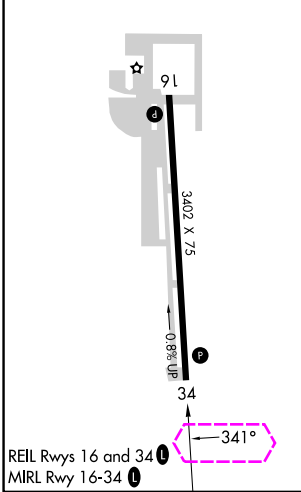
FRIDAY HARBOR (FHR)

⚠ When VGSI inop, Circling Rwy 16 NA at night. Baro-VNAV NA when using Burlington/Mount Vernon altimeter setting. For uncompensated Baro-VNAV systems, LNAV/VNAV NA below -15°C (5°F) or above 43°C (109°F). When VGSI inop, Straight-in/Circling Rwy 34 procedure NA at night. Circling NA west of Rwy 16-34. DME/DME RNP-0.3 NA. Helicopter visibility reduction below 1 SM NA. When local altimeter setting not received, use Burlington/Mount Vernon altimeter setting; increase all DA 61 feet and all MDA 80 feet; increase LPV visibility all Cats ¼ mile, LNAV/VNAV visibility all Cats ¼ mile, LNAV visibility Cat C ¼ mile, and Circling visibility Cat C ¼ mile.

MISSED APPROACH: Climb to 1000, then climbing right turn to 5000 direct ISLND and hold, continue climb-in-hold to 5000.



ELEV 113	TDZE 108
----------	----------



1000 5000 ISLND		VGSI and RNAV glidepath not coincident (VGSI Angle 3.50/TCH 42).		4 NM Holding Pattern	
* LNAV only		DFUCA		JVOLK	
MUNVE 1.8 NM to RW34		2000		161° → 2000	
RW34		* 720		← 341° 2000	
1.8 NM		3.7 NM		6.8 NM	
CATEGORY		A		B	
LPV DA		467-1 ½		359 (400-1 ½)	
LNAV/VNAV DA		513-1 ¼		405 (400-1 ¼)	
LNAV MDA		620-1		512 (600-1)	
CIRCLING		720-1		820-1	
		607 (700-1)		707 (800-1)	
				840-2	
				727 (800-2)	
				NA	

FRIDAY HARBOR, WASHINGTON
Amdt 2B 04NOV21

48°31'N-123°01'W

RNAV (GPS) RWY 34

FRIDAY HARBOR (FHR)

NW-1, 10 JUL 2025 to 07 AUG 2025

NW-1, 10 JUL 2025 to 07 AUG 2025

FRIDAY HARBOR, WASHINGTON

AL-6598 (FAA)

25219

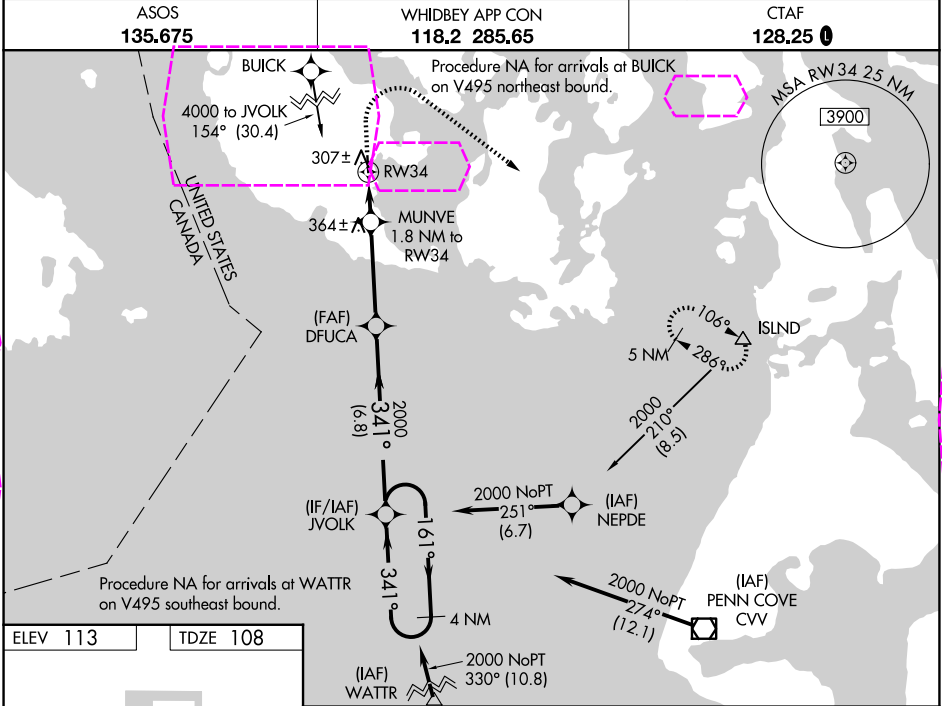
WAAS CH 40024 W34A	APP CRS 341°	Rwy Ldg TDZE Apt Elev 3402 108 113
--	------------------------	--

RNAV (GPS) RWY 34

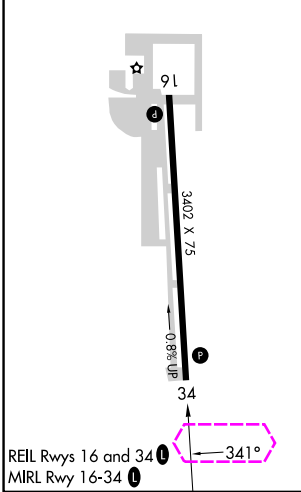
FRIDAY HARBOR (FHR)

⚠ When VGSI inop, Circling Rwy 16 NA at night. Baro-VNAV NA when using Burlington/Mount Vernon altimeter setting. For uncompensated Baro-VNAV systems, LNAV/VNAV NA below -15°C (5°F) or above 43°C (109°F). When VGSI inop, Straight-in/Circling Rwy 34 procedure NA at night. Circling NA west of Rwy 16-34. DME/DME RNP-0.3 NA. Helicopter visibility reduction below 1 SM NA. When local altimeter setting not received, use Burlington/Mount Vernon altimeter setting; increase all DA 61 feet and all MDA 80 feet; increase LPV visibility all Cats ¼ mile, LNAV/VNAV visibility all Cats ¼ mile, LNAV visibility Cat C ¼ mile, and Circling visibility Cat C ¼ mile.

MISSED APPROACH: Climb to 1000, then climbing right turn to 5000 direct ISLND and hold, continue climb-in-hold to 5000.



ELEV 113	TDZE 108
----------	----------



1000 5000 ISLND		VGSI and RNAV glidepath not coincident (VGSI Angle 3.50/TCH 42).		4 NM Holding Pattern	
* LNAV only		DFUCA		JVOLK	
MUNVE 1.8 NM to RW34		2000		161° → 2000	
RW34		* 720		← 341° 2000	
1.8 NM		3.7 NM		6.8 NM	
CATEGORY		A		B	
LPV DA		467-1 ½		359 (400-1 ½)	
LNAV/VNAV DA		513-1 ¼		405 (400-1 ¼)	
LNAV MDA		620-1		512 (600-1)	
CIRCLING		720-1		820-1	
		607 (700-1)		707 (800-1)	
				840-2	
				727 (800-2)	
				GP 3.20°	
				TCH 40	

FRIDAY HARBOR, WASHINGTON
Amdt 2B 04NOV21

48°31'N-123°01'W

RNAV (GPS) RWY 34

NW-1, 07 AUG 2025 to 04 SEP 2025

NW-1, 07 AUG 2025 to 04 SEP 2025