

FRIDAY HARBOR, WASHINGTON

AL-6598 (FAA)

25163

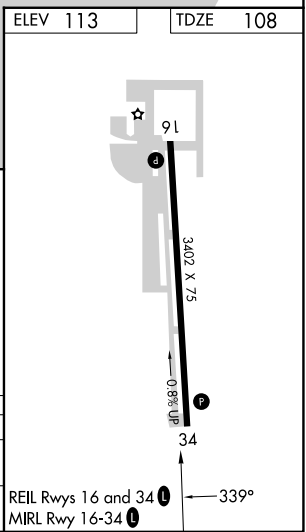
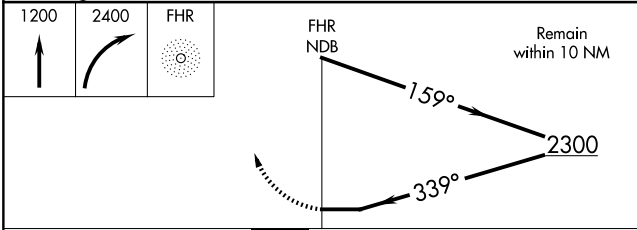
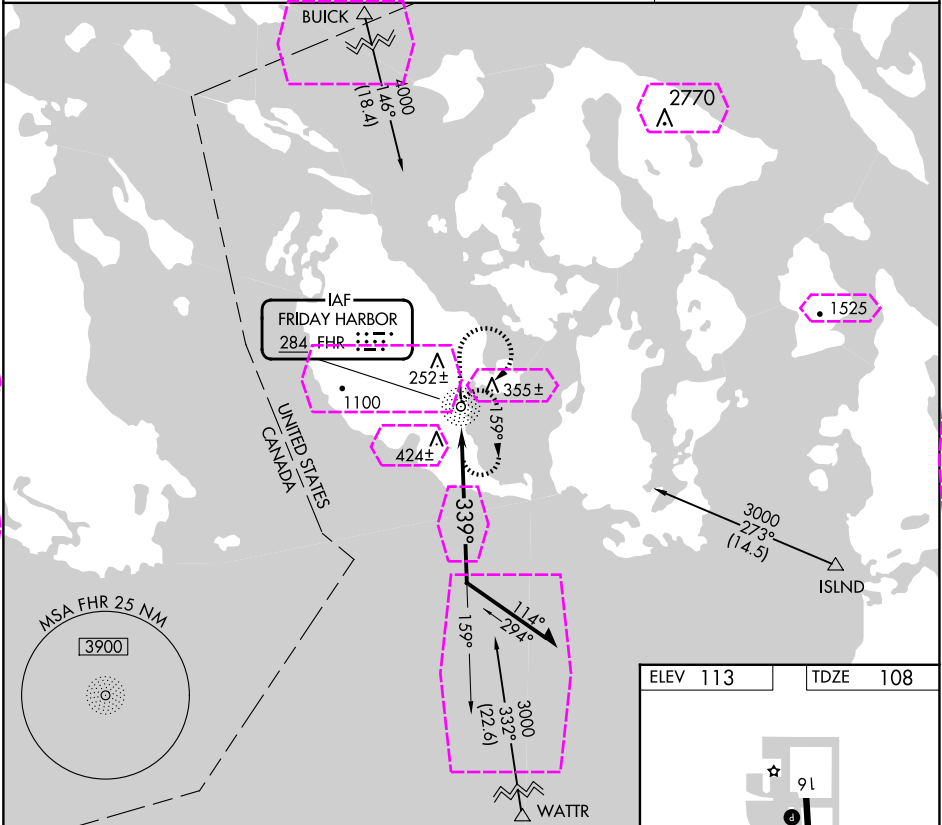
NDB FHR 284	APP CRS 339°	Rwy Ldg TDZE 108 Apt Elev 113
-----------------------	------------------------	---

NDB RWY 34
FRIDAY HARBOR (FHR)

▼ Circling NA west of Rwy 16-34.
Visibility reduction by helicopters NA.

MISSED APPROACH: Climb to 1200 then climbing right turn to 2400 direct FHR NDB and hold, continue climb-in-hold to 2400.

ASOS 135.675	WHIDBEY APP CON 118.2 285.65	CTAF 128.25 0
------------------------	--	-------------------------



CATEGORY	A	B	C	D
S-34	800-1	692 (700-1)	800-2 692 (700-2)	NA
CIRCLING	800-1 687 (700-1)	820-1 707 (800-1)	840-2 727 (800-2)	NA

FRIDAY HARBOR, WASHINGTON
Amdt 2A 04NOV21

48°31'N-123°01'W

FRIDAY HARBOR (FHR)
NDB RWY 34

NW-1, 10 JUL 2025 to 07 AUG 2025

NW-1, 10 JUL 2025 to 07 AUG 2025

FRIDAY HARBOR, WASHINGTON

AL-6598 (FAA)

25219

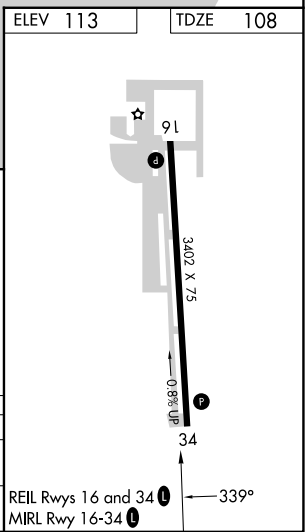
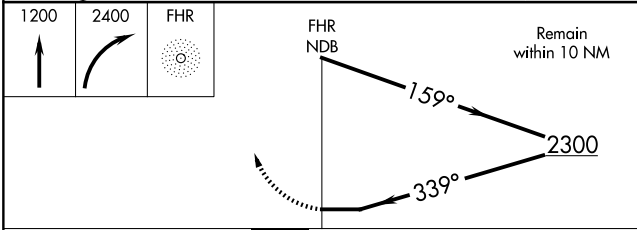
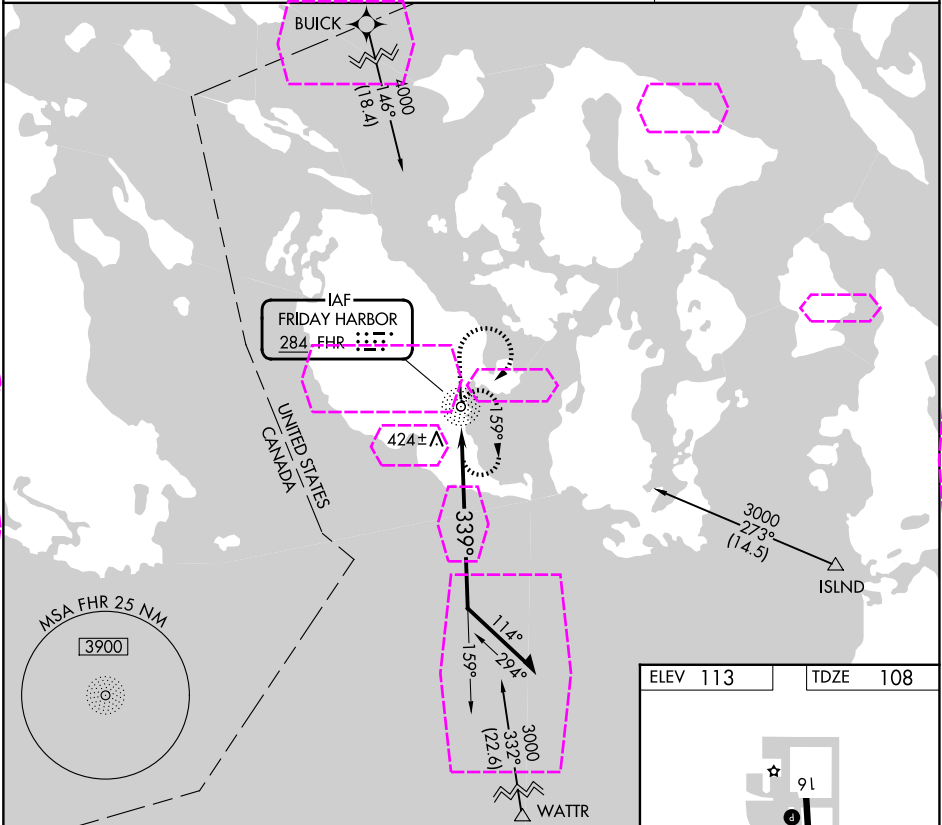
NDB FHR 284	APP CRS 339°	Rwy Ldg TDZE Apt Elev 3402 108 113
-----------------------	------------------------	--

NDB RWY 34
FRIDAY HARBOR (FHR)

▼ Circling NA west of Rwy 16-34.
Visibility reduction by helicopters NA.

MISSED APPROACH: Climb to 1200 then climbing right turn to 2400 direct FHR NDB and hold, continue climb-in-hold to 2400.

ASOS 135.675	WHIDBEY APP CON 118.2 285.65	CTAF 128.25 0
------------------------	--	-------------------------



CATEGORY	A	B	C	D
S-34	800-1	692 (700-1)	800-2 692 (700-2)	NA
CIRCLING	800-1 687 (700-1)	820-1 707 (800-1)	840-2 727 (800-2)	NA

FRIDAY HARBOR, WASHINGTON
Amdt 2A 04NOV21

48°31'N-123°01'W

FRIDAY HARBOR (FHR)
NDB RWY 34

NW-1, 07 AUG 2025 to 04 SEP 2025

NW-1, 07 AUG 2025 to 04 SEP 2025