

ROTA ISLAND, CQ

AL-6596 (FAA)

24025

APP CRS	Rwy Idg	7000
093°	TDZE	594
	Apt Elev	607

RNAV (GPS) RWY 9

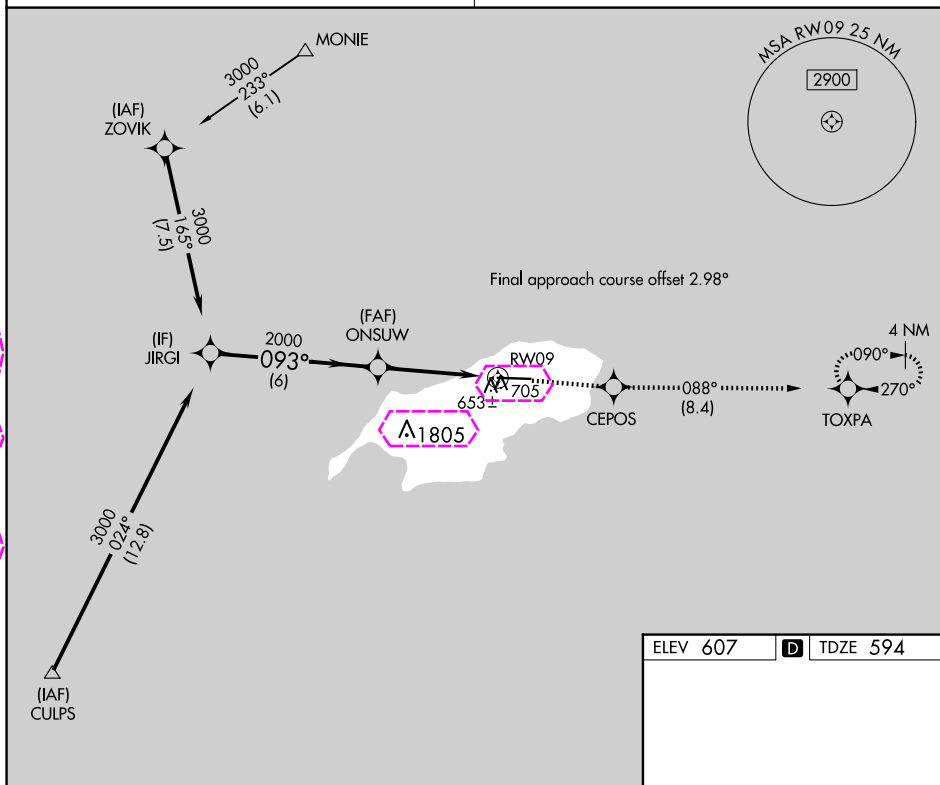
BENJAMIN TAISACAN MANGLONA INTL (GRO)(PGRO)

▼ Circling NA south of Rwy 9-27. DME/DME RNP-0.3 NA. When local altimeter setting not received, use Andersen AFB altimeter setting and increase all MDA 320 feet, increase LNAV Cat C, D visibility $\frac{7}{8}$ mile, Circling Cat C, D visibility $\frac{3}{4}$ mile. VDP NA when using Andersen AFB altimeter setting.

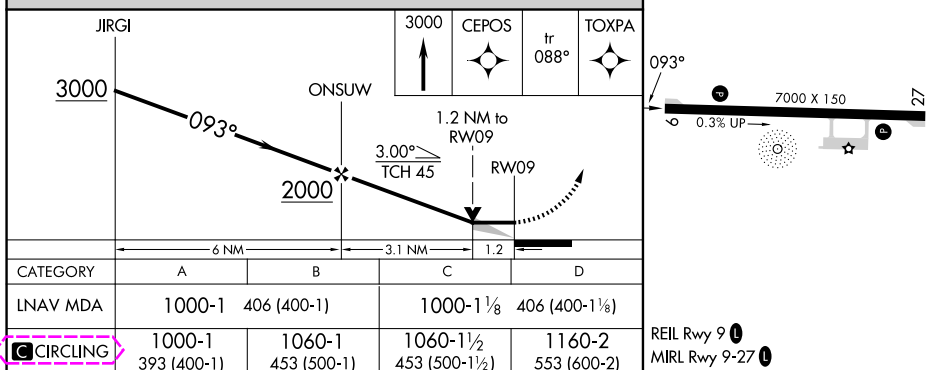
MISSED APPROACH: Climb to 3000 direct CEPOS and on track 088° to TOXPA and hold.

GUAM CERAP
120.5 263.0

CTAF
123.6



ELEV 607 **D** TDZE 594



ROTA ISLAND, CQ
Amdt 1A 29MAY14

BENJAMIN TAISACAN MANGLONA INTL (GRO)(PGRO)
14°10'N-145°14'E

RNAV (GPS) RWY 9

PAC, 12 JUN 2025 to 07 AUG 2025

PAC, 12 JUN 2025 to 07 AUG 2025

ROTA ISLAND, MP

AL-6596 (FAA)

25219

APP CRS	Rwy Ldg	7000
093°	TDZE	594
	Apt Elev	607

RNAV (GPS) RWY 9

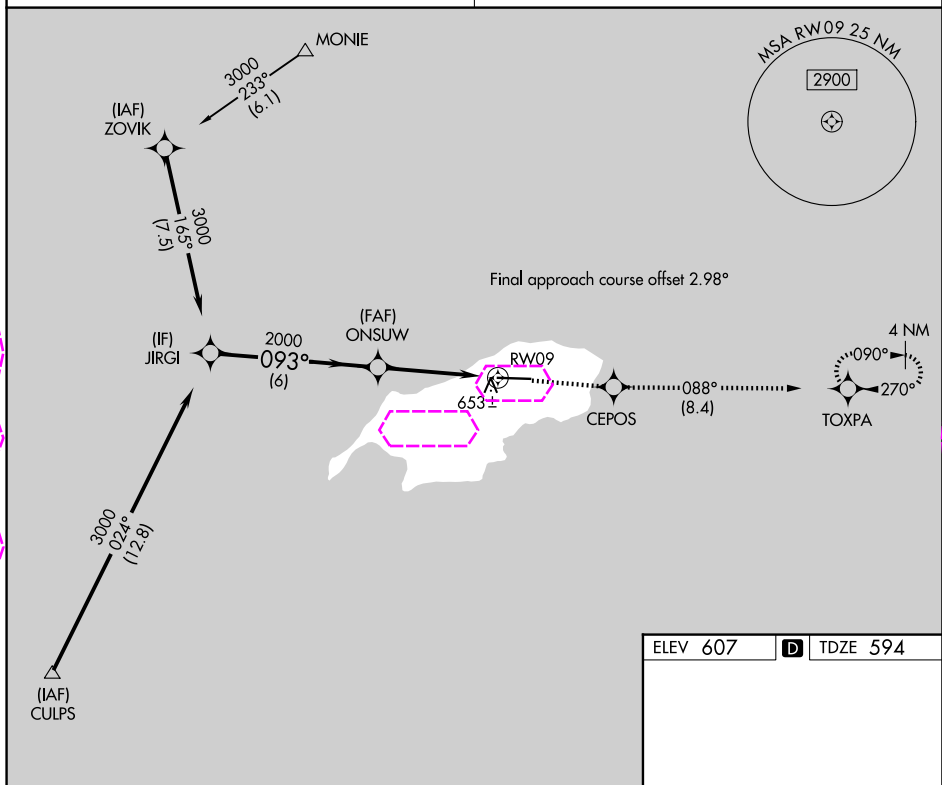
BENJAMIN TAISACAN MANGLONA INTL (GRO)(PGRO)

▼ Circling NA south of Rwy 9-27. DME/DME RNP-0.3 NA. When local altimeter setting not received, use Andersen AFB altimeter setting and increase all MDA 320 feet, increase LNAV Cat C, D visibility $\frac{7}{8}$ mile, Circling Cat C, D visibility $\frac{3}{4}$ mile. VDP NA when using Andersen AFB altimeter setting.

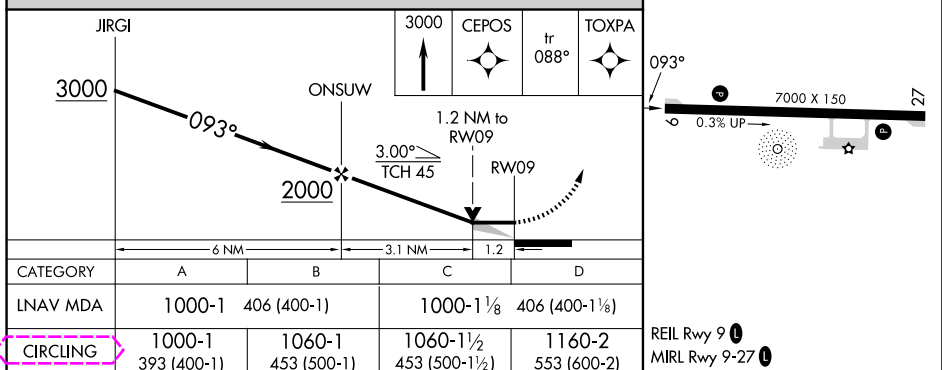
MISSED APPROACH: Climb to 3000 direct CEPOS and on track 088° to TOXPA and hold.

GUAM CERAP
120.5 263.0

CTAF
123.6



ELEV 607 **D** TDZE 594



ROTA ISLAND, MP
Amdt 1A 29MAY14

BENJAMIN TAISACAN MANGLONA INTL (GRO)(PGRO)
14°10'N-145°14'E

RNAV (GPS) RWY 9

PAC, 07 AUG 2025 to 02 OCT 2025

PAC, 07 AUG 2025 to 02 OCT 2025