

PAC, 12 JUN 2025 to 07 AUG 2025

ROTA ISLAND, MP

AL-6596 (FAA)

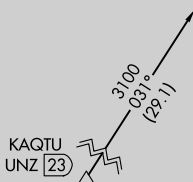
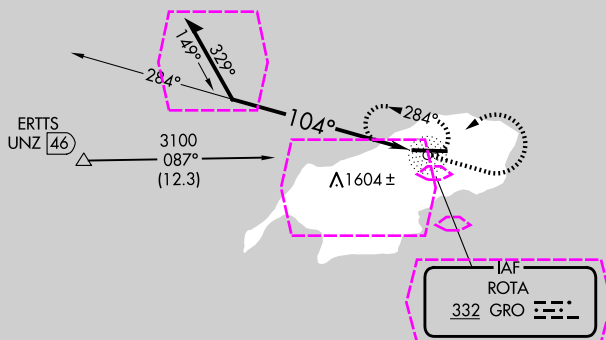
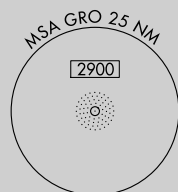
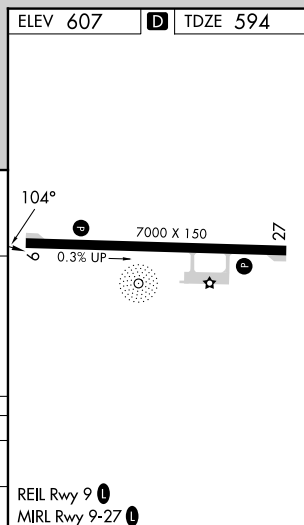
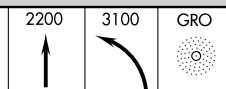
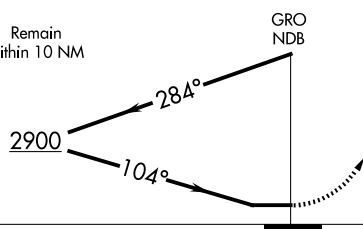
25219

NDB GRO	332	APP CRS	104°	Rwy Ldg	7000
				TDZE	594
				Apt Elev	607

NDB RWY 9

BENJAMIN TAISACAN MANGLONA INTL (GRO)(PGRO)

<p><b>▼</b> When local altimeter setting not received, use Andersen AFB altimeter setting and increase all MDA 320 feet. Circling NA south of Rwy 9-27.</p>	<p><b>MISSED APPROACH:</b> Climb to 2200 then climbing left turn to 3100 direct GRO NDB and hold.</p>
-------------------------------------------------------------------------------------------------------------------------------------------------------------	-------------------------------------------------------------------------------------------------------

GUAM CERAP  
120.5 263.0CTAF  
123.6Remain  
within 10 NM

CATEGORY	A	B	C	D
S-9	1800-1¼ 1206 (1200-1¼)	1800-1½ 1206 (1200-1½)	1800-3	1206 (1200-3)
CIRCLING	1800-1¼ 1193 (1200-1¼)	1800-1½ 1193 (1200-1½)	1800-3	1193 (1200-3)

REIL Rwy 9  
MIRL Rwy 9-27ROTA ISLAND, MP  
Amdt 4A 22JUN17BENJAMIN TAISACAN MANGLONA INTL (GRO)(PGRO)  
14°10'N-145°14'E

NDB RWY 9

PAC, 07 AUG 2025 to 02 OCT 2025

PAC, 07 AUG 2025 to 02 OCT 2025