

ROTA ISLAND, CQ

AL-6596 (FAA)

24025

NDB	GRO	Rwy Idg	7000
332	260°	TDZE	607
		Apt Elev	607

NDB RWY 27

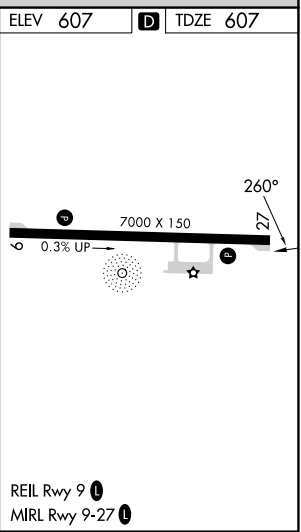
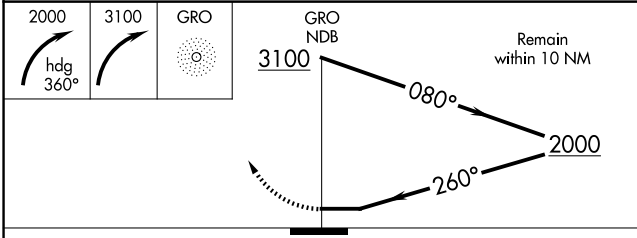
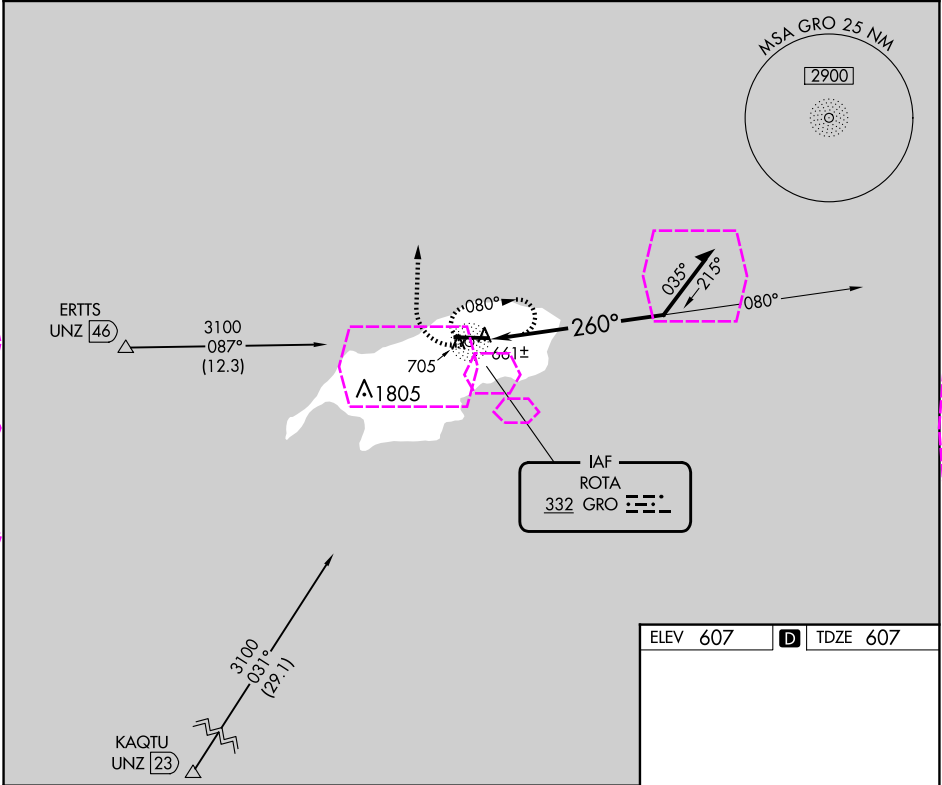
BENJAMIN TAISACAN MANGLONA INTL (GRO)(PGRO)

When local altimeter setting not received, use Andersen AFB altimeter setting and increase all MDA 320 feet, increase S-27 Cat B visibility ¼ mile, Cat C, D visibility 1½ mile, Circling Cat A, B visibility ¼ mile, Cat C 1 mile, Cat D ¾ mile. Circling NA south of Rwy 9-27.

MISSED APPROACH: Climbing right turn to 2000 on heading 360° then continue climbing right turn to 3100 direct GRO NDB and hold.

GUAM CERAP
120.5 263.0

CTAF
123.6



CATEGORY	A	B	C	D
S-27	1120-1	513 (600-1)	1120-1⅓ 513 (600-1⅓)	
CIRCLING	1120-1	513 (600-1)	1120-1½ 513 (600-1½)	1160-2 553 (600-2)

ROTA ISLAND, CQ
Amdt 4A 02MAR17

BENJAMIN TAISACAN MANGLONA INTL (GRO)(PGRO)
14°10'N-145°14'E

NDB RWY 27

PAC, 12 JUN 2025 to 07 AUG 2025

PAC, 12 JUN 2025 to 07 AUG 2025

ROTA ISLAND, MP

AL-6596 (FAA)

25219

NDB	GRO	Rwy Ldg	7000
332	260°	TDZE	607
		Apt Elev	607

NDB RWY 27

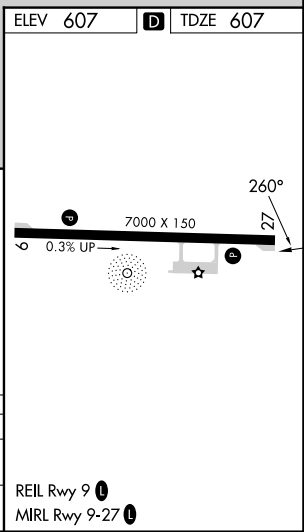
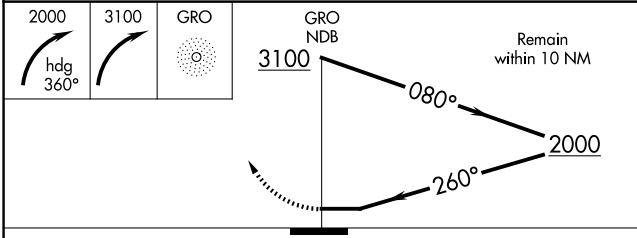
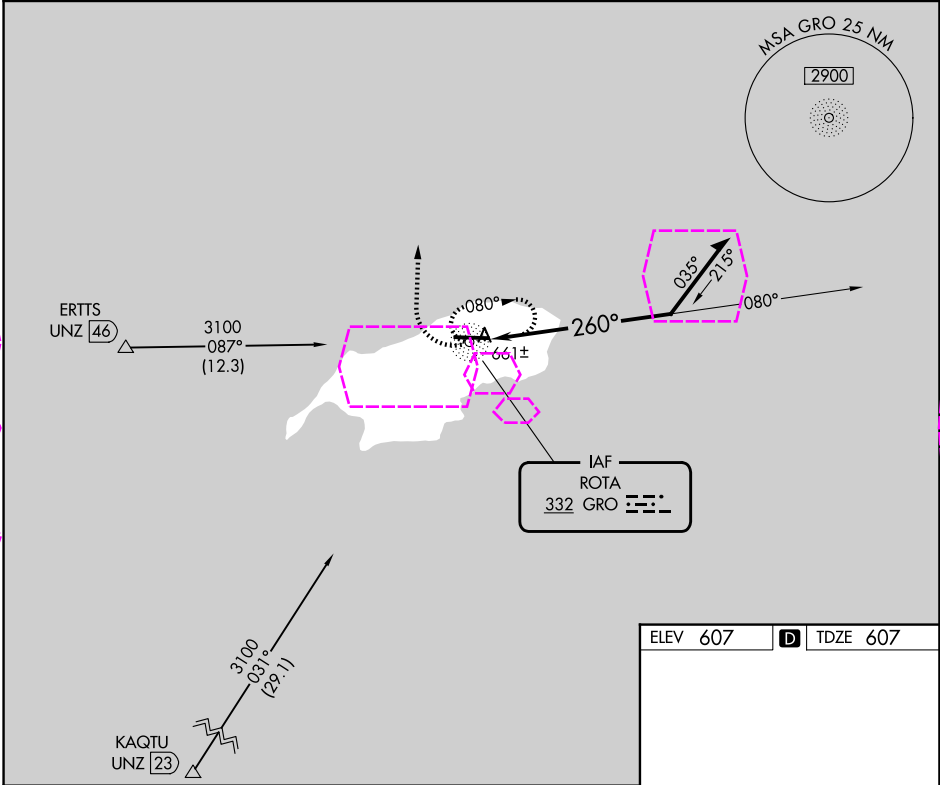
BENJAMIN TAISACAN MANGLONA INTL (GRO)(PGRO)

When local altimeter setting not received, use Andersen AFB altimeter setting and increase all MDA 320 feet, increase S-27 Cat B visibility ¼ mile, Cat C, D visibility 1½ mile, Circling Cat A, B visibility ¼ mile, Cat C 1 mile, Cat D ¾ mile. Circling NA south of Rwy 9-27.

MISSED APPROACH: Climbing right turn to 2000 on heading 360° then continue climbing right turn to 3100 direct GRO NDB and hold.

GUAM CERAP
120.5 263.0

CTAF
123.6



CATEGORY	A	B	C	D
S-27	1120-1	513 (600-1)	1120-1⅓	513 (600-1⅓)
CIRCLING	1120-1	513 (600-1)	1120-1½	1160-2
			513 (600-1½)	553 (600-2)

ROTA ISLAND, MP
Amdt 4A 02MAR17

BENJAMIN TAISACAN MANGLONA INTL (GRO)(PGRO)
14°10'N-145°14'E

NDB RWY 27

PAC, 07 AUG 2025 to 02 OCT 2025

PAC, 07 AUG 2025 to 02 OCT 2025