

(YODUH1.YODUH) 24025

AL-6552 (FAA)

CASTROVILLE MUNI (CVB)

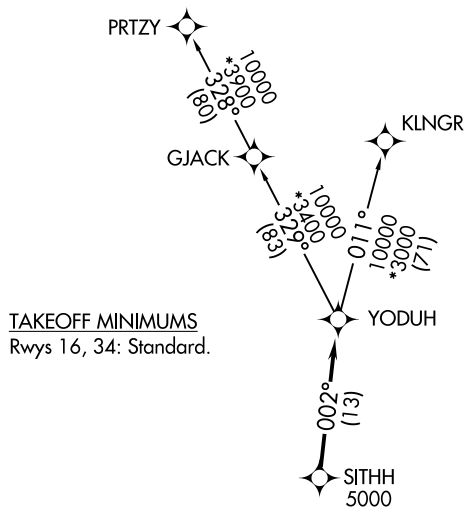
YODUH ONE DEPARTURE (RNAV)

CASTROVILLE, TEXAS

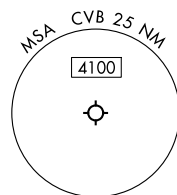
RNAV 1 - DME/DME IRU or GPS.

**TOP ALTITUDE:
ASSIGNED BY ATC**SAN ANTONIO DEP CON
118.05 353.5

RADAR required.

NOTE: Aircraft destined for airports north/northeast of
DFW terminal area must file the KLNGR Transition.

NOTE: Chart not to scale.



DEPARTURE ROUTE DESCRIPTION

TAKEOFF RUNWAY 16: Climb on heading 157° or as assigned by ATC, for vectors to SITHH, thence . . .TAKEOFF RUNWAY 34: Climb on heading 337° or as assigned by ATC, for vectors to SITHH, thence . . .

. on track 002° to YODUH, then on Transition. Maintain ATC assigned altitude.

KLNGR TRANSITION (YODUH1.KLNGR)PRTZY TRANSITION (YODUH1.PRTZY)

YODUH ONE DEPARTURE (RNAV)

(YODUH1.YODUH) 25JAN24

CASTROVILLE, TEXAS
CASTROVILLE MUNI (CVB)

SC-3, 10 JUL 2025 to 07 AUG 2025

SC-3, 10 JUL 2025 to 07 AUG 2025

(YODUH2.YODUH) 25219

AL-6552 (FAA)

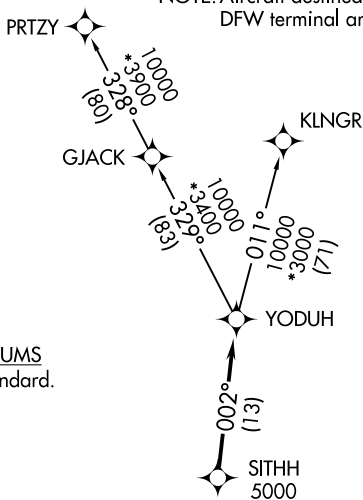
CASTROVILLE MUNI (CVB)

CASTROVILLE, TEXAS

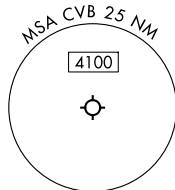
YODUH TWO DEPARTURE (RNAV)

SAN ANTONIO DEP CON
118.05 353.5

RNAV 1 - DME/DME IRU or GPS.

RADAR required for non-GPS equipped aircraft.
RADAR required.**TOP ALTITUDE:
ASSIGNED BY ATC**NOTE: Aircraft destined for airports north/northeast of
DFW terminal area must file the KLNGR Transition.TAKEOFF MINIMUMS
Rwys 16, 34: Standard.

NOTE: Chart not to scale.



DEPARTURE ROUTE DESCRIPTION

TAKEOFF RUNWAY 16: Climb on heading 157° or as assigned by ATC, for vectors to SITHH, thence. . .TAKEOFF RUNWAY 34: Climb on heading 337° or as assigned by ATC, for vectors to SITHH, thence. . .

. . . on track 002° to YODUH, then on transition. Maintain ATC assigned altitude.

Expect filed altitude 10 minutes after departure.

KLNGR TRANSITION (YODUH2.KLNGR)PRTZY TRANSITION (YODUH2.PRTZY)

YODUH TWO DEPARTURE (RNAV)

(YODUH2.YODUH) 07AUG25

CASTROVILLE, TEXAS
CASTROVILLE MUNI (CVB)

SC-3, 07 AUG 2025 to 04 SEP 2025

SC-3, 07 AUG 2025 to 04 SEP 2025