

CASTROVILLE, TEXAS

AL-6552 (FAA)

22363

WAAS CH 50139 W34A	APP CRS 337°	Rwy Idg TDZE 769 Apt Elev 774	5001 769 774
--	------------------------	---	---

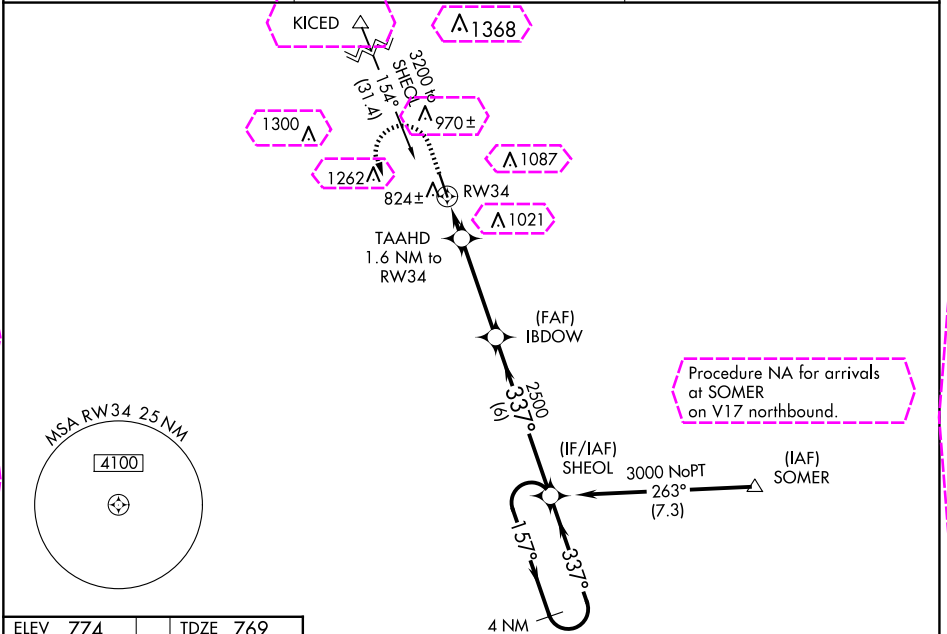
RNAV (GPS) RWY 34

CASTROVILLE MUNI (CVB)

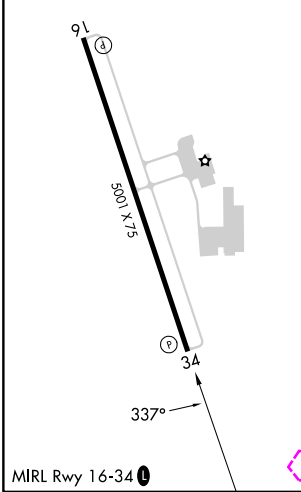
For uncompensated Baro-VNAV systems, LNAV/VNAV NA below -15°C (5°F) or above 54°C (130°F). DME/DME RNP-0.3 NA. When local altimeter setting not received, use Lackland AFB (Kelly Fld Annex) altimeter setting: increase all DA/MDA 60 feet and all visibilities ¼ mile. Helicopter visibility reduction below ¾ SM NA. Night landing: Rwy 16 NA.

MISSED APPROACH: Climb to 1300 then climbing left turn to 3000 direct SHEOL and hold.

AWOS-3 119.25	SAN ANTONIO APP CON 118.05 353.5	UNICOM 122.8 (CTAF) 0
-------------------------	--	---------------------------------



ELEV 774	TDZE 769
-----------------	-----------------



<div>1300 ↑</div>		<div>3000 ↷</div>		<div>SHEOL ✦</div>		<div>SHEOL</div>		<div>4 NM Holding Pattern</div>	
*LNAV only.		TAAHD 1.6 NM to RW34		IBDOW 2500		337°		157° → 3000 ← 337°	
<div>RW34 ↘</div>		*1300		2500		GP 3.00° TCH 40°			
1.6 NM		3.7 NM		6 NM					
CATEGORY		A		B		C		D	
LPV DA		1019-7⁄8		250 (300-7⁄8)				NA	
LNAV/ VNAV DA		1127-1¼		358 (400-1¼)				NA	
LNAV MDA		1200-1		431 (500-1)		1200-1½ 431 (500-1½)		NA	
<div>CIRCLING</div>		1200-1 426 (500-1)		1380-1 606 (700-1)		1580-2¼ 806 (900-2¼)		NA	

CASTROVILLE, TEXAS
Amdt 1 15OCT15

29°21'N-98°51'W

RNAV (GPS) RWY 34

CASTROVILLE MUNI (CVB)

SC-3, 10 JUL 2025 to 07 AUG 2025

SC-3, 10 JUL 2025 to 07 AUG 2025

CASTROVILLE, TEXAS

AL-6552 (FAA)

25219

WAAS CH 50139 W34A	APP CRS 337°	Rwy Ldg TDZE 769 Apt Elev 774	5001 769 774
--	------------------------	---	---

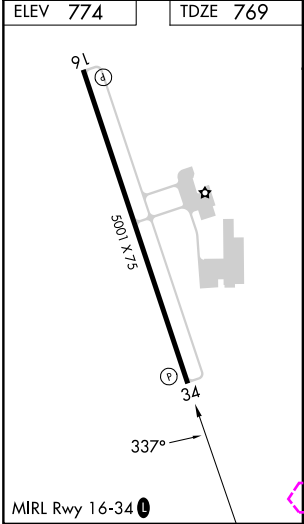
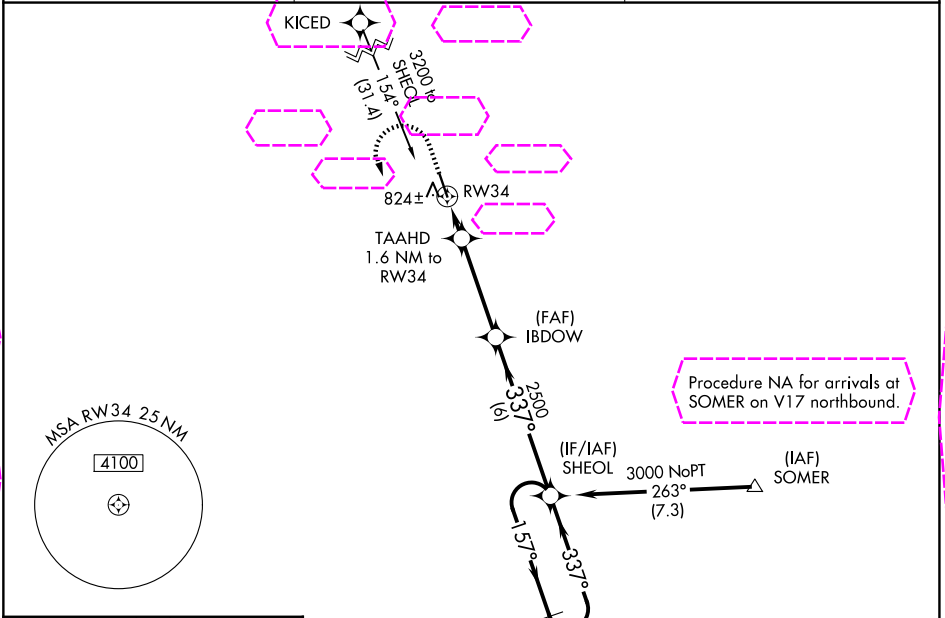
RNAV (GPS) RWY 34

CASTROVILLE MUNI (CVB)

For uncompensated Baro-VNAV systems, LNAV/VNAV NA below -15°C (5°F) or above 54°C (130°F). DME/DME RNP-0.3 NA. When local altimeter setting not received, use Lackland AFB (Kelly Fld Annex) altimeter setting: increase all DA/MDA 60 feet and all visibilities ¼ mile. Helicopter visibility reduction below ¾ SM NA. Night landing: Rwy 16 NA.

MISSED APPROACH: Climb to 1300 then climbing left turn to 3000 direct SHEOL and hold.

AWOS-3 119.25	SAN ANTONIO APP CON 118.05 353.5	UNICOM 122.8 (CTAF) 0
-------------------------	--	---------------------------------



1300	3000	SHEOL	IBDOW	TAAHD	RW34	GP 3.00°	TCH 40
*LNAV only.				1.6 NM to RW34			
			2500	1300	2500		
			1.6 NM	3.7 NM	6 NM		
CATEGORY	A	B	C	D			
LPV DA	1019-7/8	250 (300-7/8)		NA			
LNAV/VNAV DA	1127-1 1/4	358 (400-1 1/4)		NA			
LNAV MDA	1200-1	431 (500-1)	1200-1 1/8	431 (500-1 1/8)			
CIRCLING	1200-1	1380-1	1580-2 1/4	806 (900-2 1/4)			
	426 (500-1)	606 (700-1)					

CASTROVILLE, TEXAS
Amdt 1 15OCT15

29°21'N-98°51'W

RNAV (GPS) RWY 34

SC-3, 07 AUG 2025 to 04 SEP 2025

SC-3, 07 AUG 2025 to 04 SEP 2025