

CASTROVILLE, TEXAS

AL-6552 (FAA)

22363

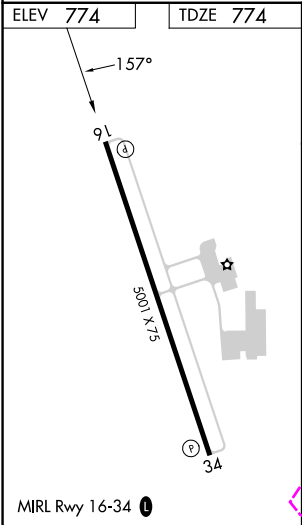
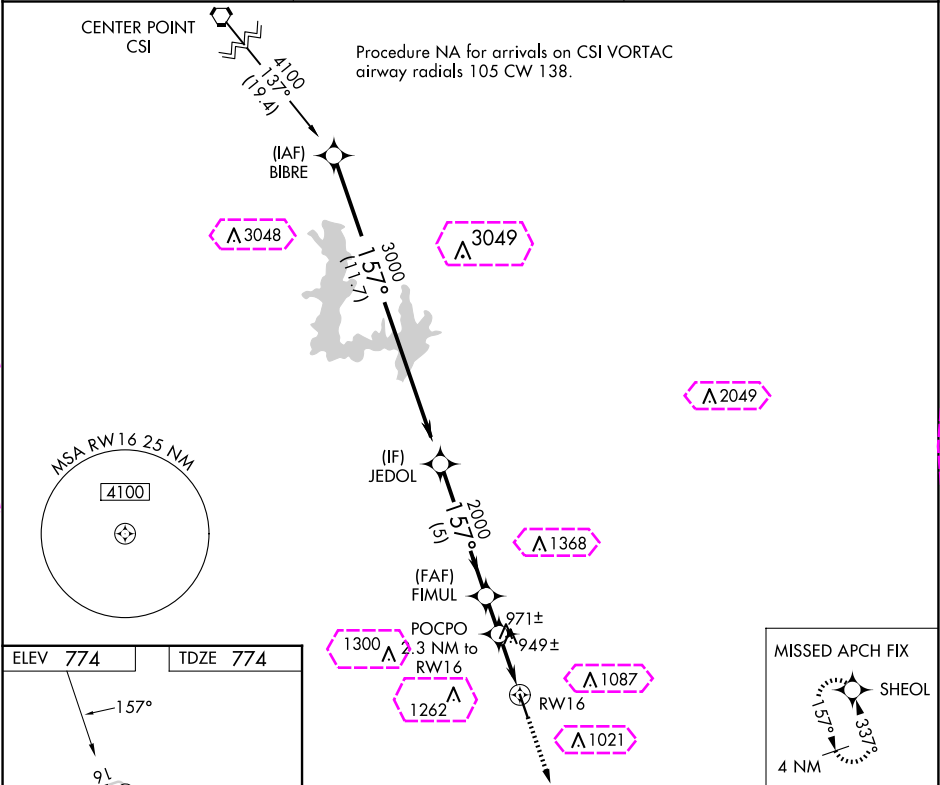
WAAS CH <b>86838</b> <b>W16A</b>	APP CRS <b>157°</b>	Rwy Idg <b>5001</b> TDZE <b>774</b> Apt Elev <b>774</b>
--	------------------------	---

# RNAV (GPS) RWY 16

CASTROVILLE MUNI (CVB)

<p><b>⚠</b> DME/DME RNP-0.3 NA. When local altimeter setting not received, use Lackland AFB (Kelly FLD Annex) altimeter setting: increase all MDA 60 feet, increase all Cat C visibilities ¼ mile. Helicopter visibility reduction below 1 SM NA. Night landing: Rwy 16 NA.</p>	<p><b>MISSED APPROACH:</b> Climb to 3000 direct SHEOL and hold.</p>
---	---

AWOS-3 <b>119.25</b>	SAN ANTONIO APP CON <b>118.05 353.5</b>	UNICOM <b>122.8 (CTAF) 0</b>
-------------------------	--	---------------------------------



	JEDOL	FIMUL	POCPO 2.3 NM to RW16	RW16
	3000	2000	1540	
	157°	3.00° TCH 40		
	5 NM	1.4 NM	2.3 NM	
CATEGORY	A	B	C	D
LP MDA	1200-1	426 (500-1)	1200-1¼ 426 (500-1¼)	NA
LNAV MDA	1240-1	466 (500-1)	1240-1⅜ 466 (500-1⅜)	NA
<b>CIRCLING</b>	1240-1 466 (500-1)	1380-1 606 (700-1)	1580-2¼ 806 (900-2¼)	NA

CASTROVILLE, TEXAS  
Amdt 1A 04FEB16

29°21'N-98°51'W

CASTROVILLE MUNI (CVB)  
RNAV (GPS) RWY 16

SC-3, 10 JUL 2025 to 07 AUG 2025

SC-3, 10 JUL 2025 to 07 AUG 2025

CASTROVILLE, TEXAS

AL-6552 (FAA)

25219

WAAS CH <b>86838</b> <b>W16A</b>	APP CRS <b>157°</b>	Rwy Ldg TDZE <b>774</b> Apt Elev <b>774</b>
--	------------------------	---

## RNAV (GPS) RWY 16

CASTROVILLE MUNI (CVB)

**⚠** DME/DME RNP-0.3 NA. When local altimeter setting not received, use Lackland AFB (Kelly FLD Annex) altimeter setting: increase all MDA 60 feet, increase all Cat C visibilities ¼ mile. Helicopter visibility reduction below 1 SM NA. Night landing: Rwy 16 NA.

MISSED APPROACH: Climb to 3000 direct SHEOL and hold.

AWOS-3  
**119.25**

SAN ANTONIO APP CON  
**118.05 353.5**

UNICOM  
**122.8 (CTAF) 0**

CENTER POINT  
CSI

Procedure NA for arrivals on CSI VORTAC  
airway radials 105 CW 138.

(IAF)  
BIBRE

3000  
157°  
(11.7)

(IF)  
JEDOL

2000  
157°  
(5)

(FAF)  
FIMUL

POCPO  
2.3 NM to  
RW16

971±  
949±

RW16

MISSED APCH FIX



ELEV **774**

TDZE **774**

157°

91

34

5600 x 75

34

MIRL Rwy 16-34 0

JEDOL

3000

FIMUL

2000

3.00°  
TCH 40

POCPO  
2.3 NM to  
RW16

1540

3000

SHEOL

↑

✧

4 NM

157°

353°

4 NM

157°

353°

4 NM

157°

353°

4 NM

CATEGORY	A	B	C	D
LP MDA	1200-1	426 (500-1)	1200-1¼ 426 (500-1¼)	NA
LNAV MDA	1240-1	466 (500-1)	1240-1⅜ 466 (500-1⅜)	NA
<b>CIRCLING</b>	1240-1 466 (500-1)	1380-1 606 (700-1)	1580-2¼ 806 (900-2¼)	NA

CASTROVILLE, TEXAS

Amdt 1A 04FEB16

29°21'N-98°51'W

CASTROVILLE MUNI (CVB)

RNAV (GPS) RWY 16

SC-3, 07 AUG 2025 to 04 SEP 2025

SC-3, 07 AUG 2025 to 04 SEP 2025