

ANDALUSIA/OPP, ALABAMA

AL-6524 (FAA)

23278

WAAS CH <b>82600</b> <b>W11A</b>	APP CRS <b>109°</b>	Rwy Idg <b>6000</b> TDZE <b>310</b> Apt Elev <b>310</b>
--	------------------------	---

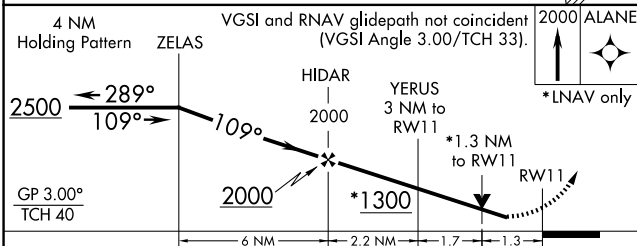
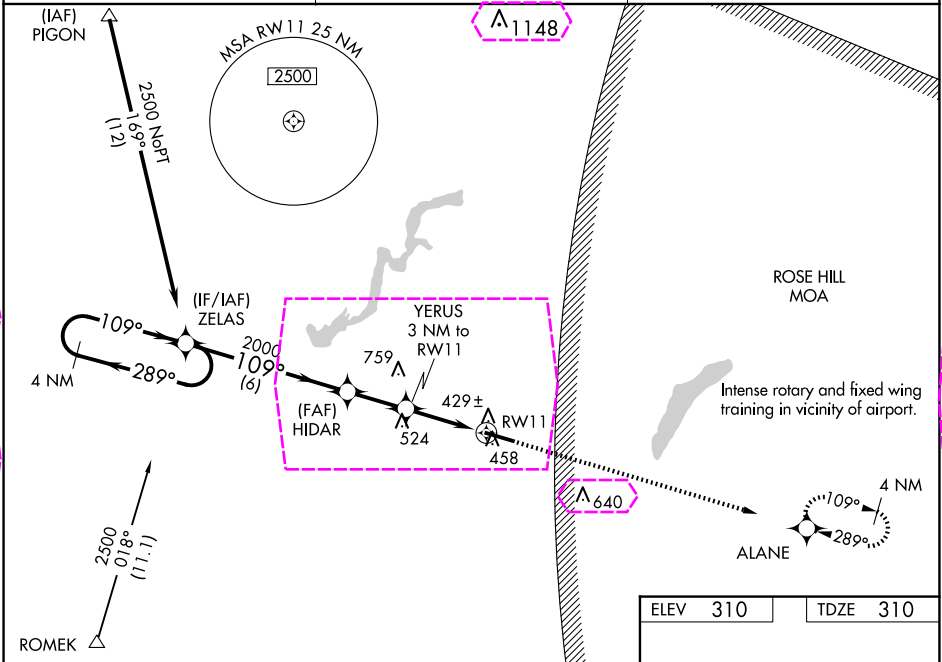
# RNAV (GPS) RWY 11

SOUTH ALABAMA RGNL AT BILL BENTON FLD (79J)

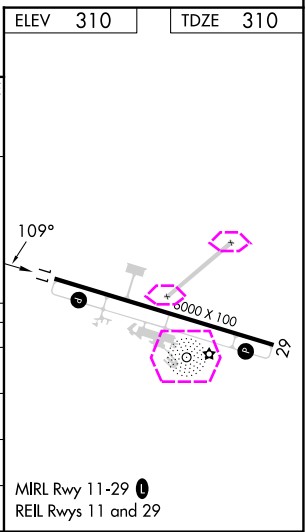
⚠ For uncompensated Baro-VNAV systems, LNAV/VNAV NA below -15°C (5°F) or above 54°C (130°F). DME/DME RNP-0.3 NA. Helicopter visibility reduction below ¾ SM NA. When local altimeter setting not received, use Cairns AAF (Fort Novosel) altimeter setting and increase all DA 82 feet, all MDA 100 feet. Increase all LPV and LNAV/VNAV visibilities ¾ mile all Cats, LNAV and Circling Cats C and D ¼ mile. Baro-VNAV and VDP NA when using Cairns AAF (Fort Novosel) altimeter setting.

MISSED APPROACH: Climb to 2000 direct ALANE and hold.

ASOS <b>134.875</b>	CAIRNS APP CON ★ <b>133.45 239.275</b>	UNICOM <b>122.8 (CTAF) 0</b>
------------------------	---	---------------------------------



CATEGORY	A	B	C	D
LPV DA	615-1 305 (400-1)			
LNAV/VNAV DA	655-1½ 345 (400-1½)			
LNAV MDA	760-1	450 (500-1)	760-1¾	450 (500-1¾)
CIRCLING	820-1	510 (600-1)	860-1½ 550 (600-1½)	940-2 630 (700-2)



ANDALUSIA/OPP, ALABAMA  
Amdt 2C 20MAY21

SOUTH ALABAMA RGNL AT BILL BENTON FLD (79J)  
31°19'N-86°24'W  
**RNAV (GPS) RWY 11**

WAAS CH <b>82600</b> <b>W11A</b>	APP CRS <b>109°</b>	Rwy Ldg <b>6000</b> TDZE <b>310</b> Apt Elev <b>310</b>
--	------------------------	---

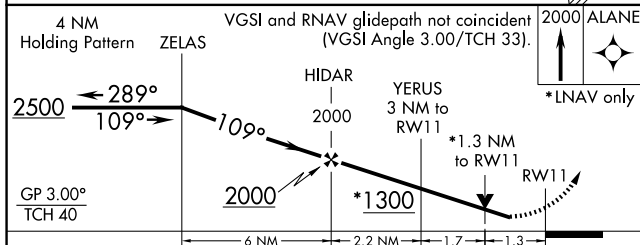
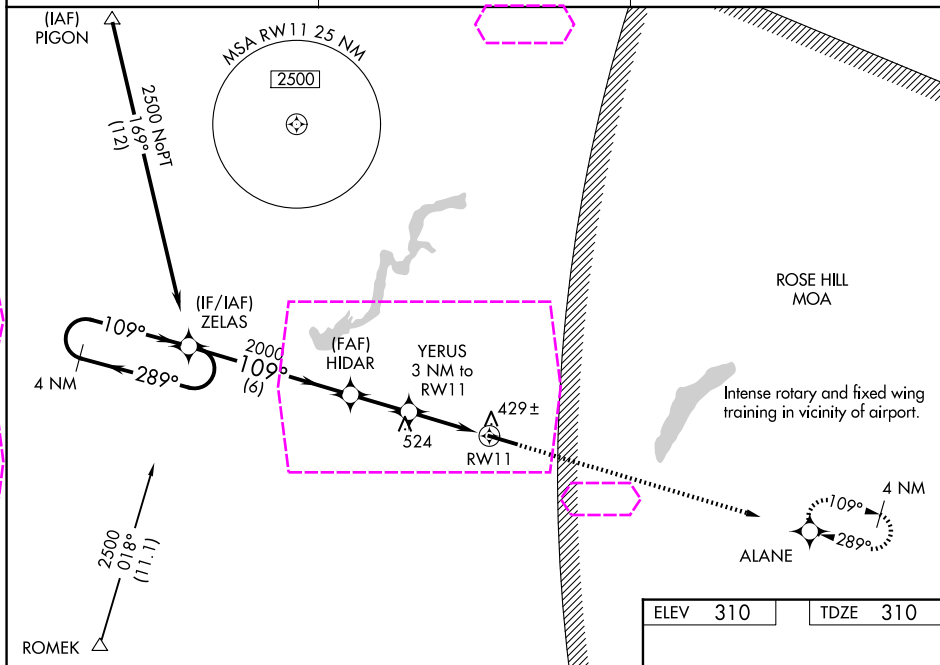
RNAV (GPS) RWY 11

SOUTH ALABAMA RGNL AT BILL BENTON FLD (79J)

- T** For uncompensated Baro-VNAV systems, LNAV/VNAV NA below -15°C (5°F) or above 54°C (130°F). DME/DEMN RNP-0.3 NA. Helicopter visibility reduction below ½ SM NA.
- A** When local altimeter setting not received, use Cairns AAF (Fort Novosel) altimeter setting and increase all DA 82 feet, all MDA 100 feet. Increase all LPV and LNAV/VNAV visibilities ¾ mile all Coats, LNAV and Circling Coats C and D ¼ mile. Baro-VNAV and VDP NA when using Cairns AAF (Fort Novosel) altimeter setting.

**MISSED APPROACH:** Climb to 2000 direct ALANE and hold.

ASOS <b>134.875</b>	CAIRNS APP CON ★ <b>133.45 239,275</b>	UNICOM <b>122.8 (CTAF) 0</b>
------------------------	---	---------------------------------



CATEGORY	A	B	C	D
LPV DA	615-1 305 (400-1)			
RNAV/ VNAV DA	655-1½ 345 (400-1½)			
RNAV MDA	760-1 450 (500-1)		760-1¾ 450 (500-1¾)	
CIRCLING	820-1 510 (600-1)		860-1½ 550 (600-1½)	940-2 630 (700-2)

