

SC-5, 10 JUL 2025 to 07 AUG 2025

GIDDINGS, TEXAS

AL-6499 (FAA)

25219

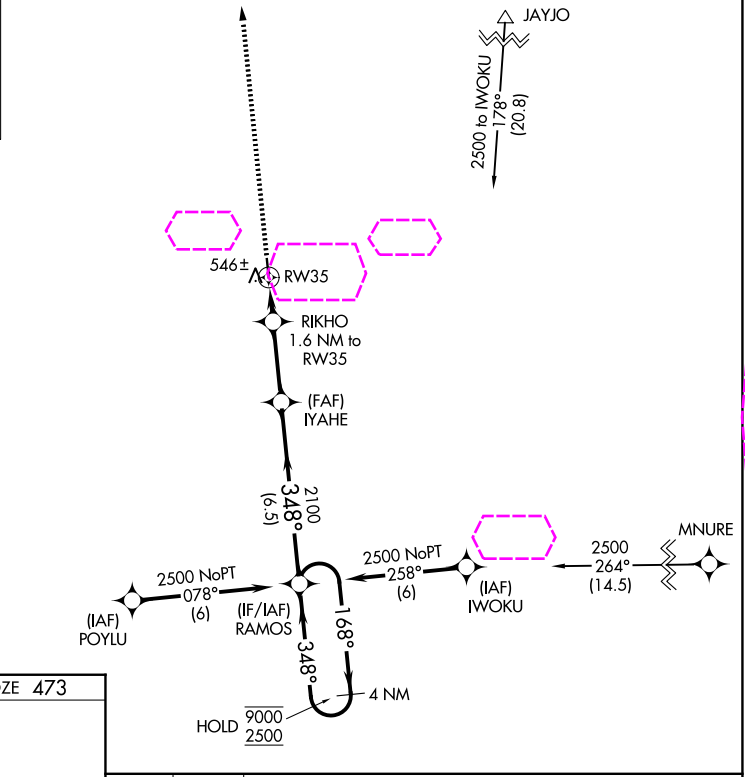
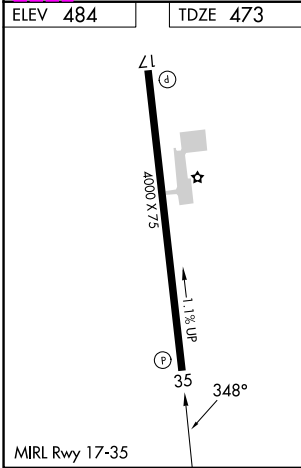
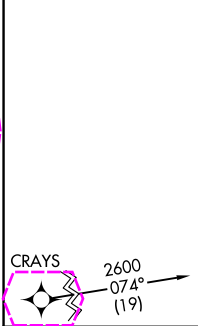
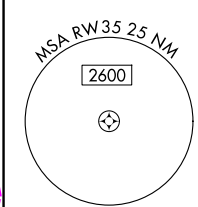
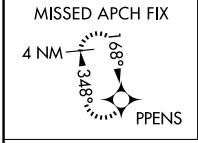
APP CRS 348°	Rwy Ldg 4000
	TDZE 473
	Apt Elev 484


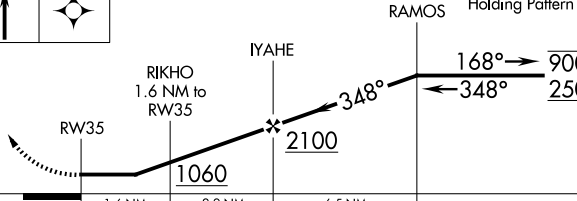
RNAV (GPS) RWY 35

GIDDINGS-LEE COUNTY (GYB)

RNP APCH - GPS.	MISSED APPROACH: Climb to 2500 direct PPENS and hold.
Rwy 35 helicopter visibility reduction below 1 SM NA. Procedure NA at night. When local altimeter setting not received, use AUS altimeter setting and increase all MDAs 100 feet and LNAV visibility Cat C ¼ SM, and Circling visibility Cat C ¼ SM.	

AWOS-3 119.225	AUSTIN APP CON 127.225 317.65	UNICOM 123.05 (CTAF)
-------------------	----------------------------------	-------------------------



2500 ↑	PPENS 	Visual Segment - Obstacles.			4 NM Holding Pattern	
 <p>The diagram illustrates a flight path starting from the left, indicated by a dashed arrow. It passes through several points: RW35, RIKHO (1.6 NM to RW35), IYAHE (2100), and RAMOS. The path then turns right at a 168° angle to a 9000' altitude, and finally turns left at a 348° angle to a 2500' altitude. Distances between points are marked: 1.6 NM between RW35 and RIKHO, 2.9 NM between RIKHO and IYAHE, and 6.5 NM between IYAHE and RAMOS. The angle between the path segments is 348°.</p>						
CATEGORY	A		B	C	D	
LNAV MDA	800-1 327 (400-1)					NA
CIRCLING	880-1 396 (400-1)	1160-1 676 (700-1)	1240-2¼ 756 (800-2¼)	NA		

GIDDINGS, TEXAS
Amdt 1 20FEB25

30°10'N-96°59'W

RNAV (GPS) RWY 35

SC-5, 07 AUG 2025 to 04 SEP 2025

SC-5, 07 AUG 2025 to 04 SEP 2025