

GIDDINGS, TEXAS

AL-6499 (FAA)

25051

APP CRS	Rwy Idg	4000
168°	TDZE	484
	Apt Elev	484

RNAV (GPS) RWY 17

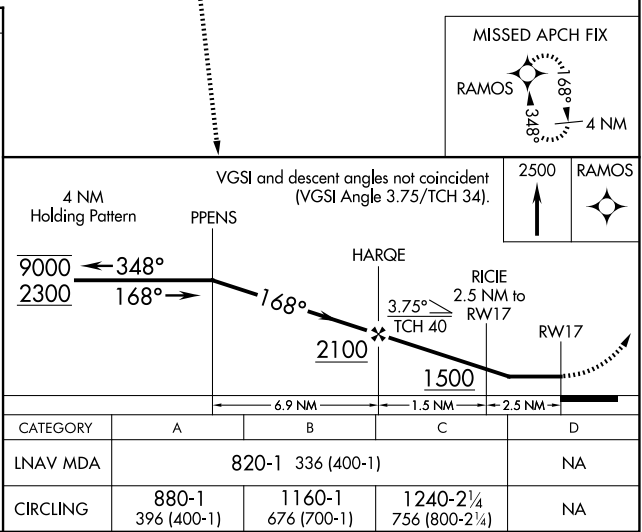
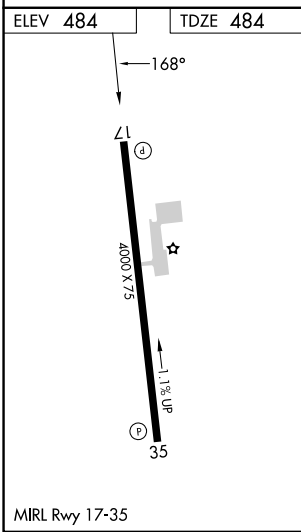
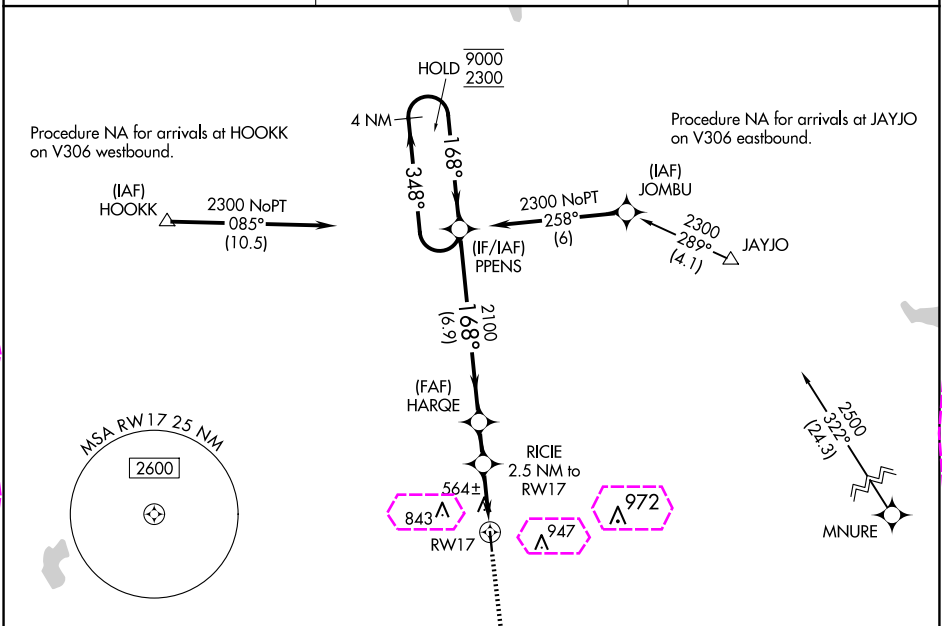
GIDDINGS-LEE COUNTY (GYB)

RNP APCH - GPS.

▼ Procedure NA at night. Rwy 17 helicopter visibility reduction below 1 SM NA. When local altimeter setting not received, use AUS altimeter setting and increase all MDAs 100 feet and LNAV visibility Cat C ¼ SM, and Circling visibility Cat C ¼ SM.

▲ MISSED APPROACH: Climb to 2500 direct RAMOS and hold.

AWOS-3 119.225	AUSTIN APP CON 127.225 317.65	UNICOM 123.05 (CTAF)
-------------------	----------------------------------	-------------------------



GIDDINGS, TEXAS
Amdt 1 20FEB25

30°10'N-96°59'W

GIDDINGS-LEE COUNTY (GYB) RNAV (GPS) RWY 17

SC-5, 10 JUL 2025 to 07 AUG 2025

SC-5, 10 JUL 2025 to 07 AUG 2025

GIDDINGS, TEXAS

AL-6499 (FAA)

25219

APP CRS	Rwy Ldg	4000
168°	TDZE	484
	Apt Elev	484

RNAV (GPS) RWY 17

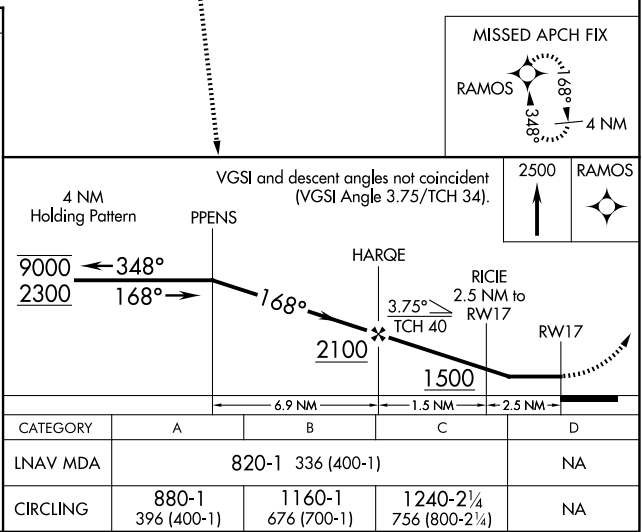
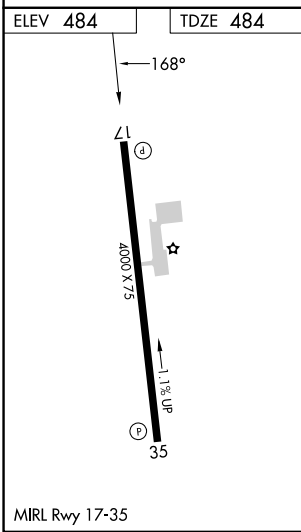
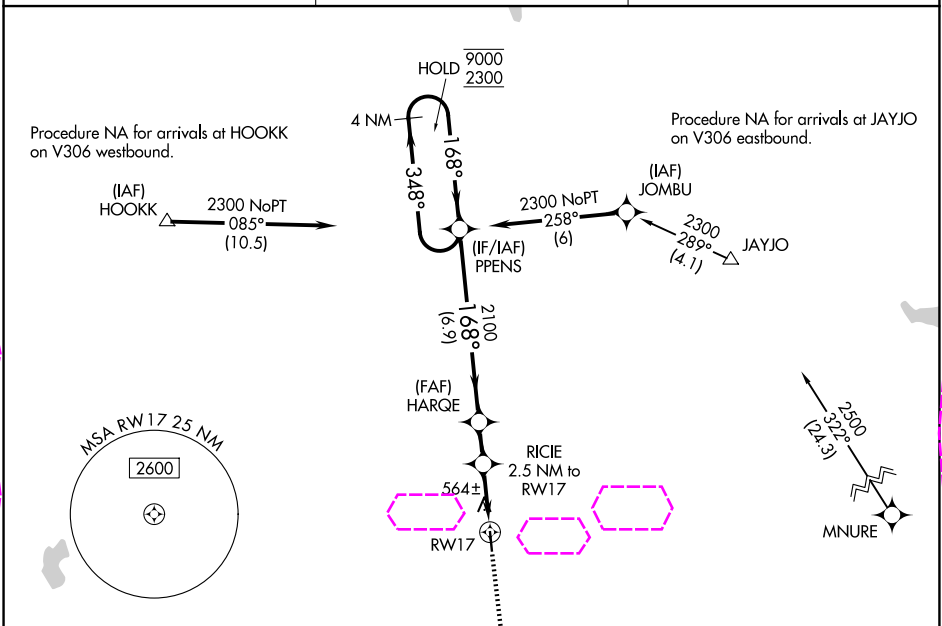
GIDDINGS-LEE COUNTY (GYB)

RNP APCH - GPS.

Procedure NA at night. Rwy 17 helicopter visibility reduction below 1 SM NA. When local altimeter setting not received, use AUS altimeter setting and increase all MDAs 100 feet and LNAV visibility Cat C ¼ SM, and Circling visibility Cat C ¼ SM.

MISSED APPROACH: Climb to 2500 direct RAMOS and hold.

AWOS-3 119.225	AUSTIN APP CON 127.225 317.65	UNICOM 123.05 (CTAF)
-------------------	----------------------------------	-------------------------



GIDDINGS, TEXAS
Amdt 1 20FEB25

30°10'N-96°59'W

RNAV (GPS) RWY 17

GIDDINGS-LEE COUNTY (GYB)

SC-5, 07 AUG 2025 to 04 SEP 2025

SC-5, 07 AUG 2025 to 04 SEP 2025