

CHANDLER, ARIZONA

AL-6494 (FAA)

24193

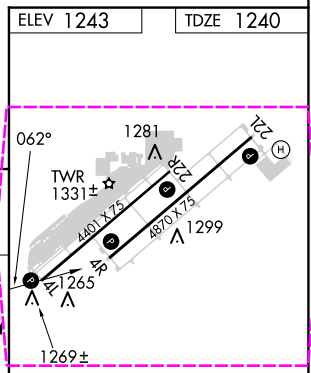
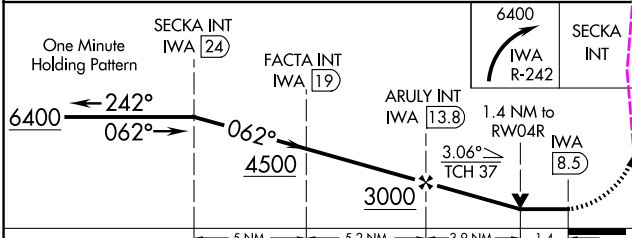
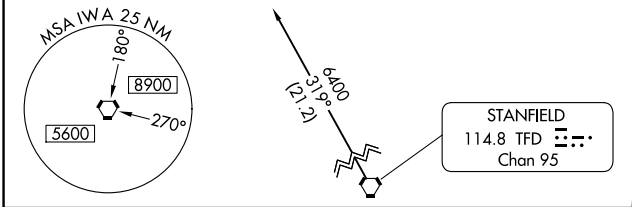
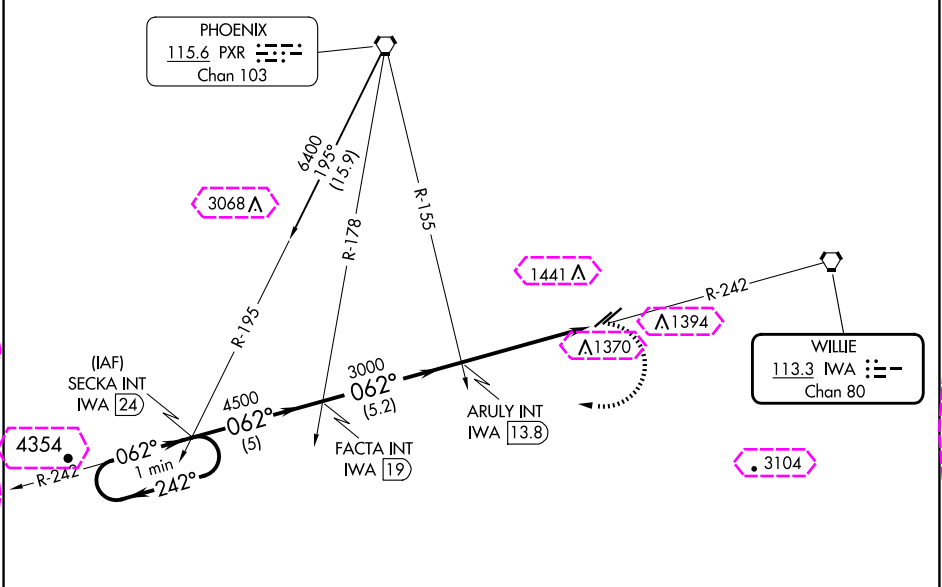
VORTAC IWA 113.3 Chan 80	APP CRS 062°	Rwy Idg 4870 TDZE 1240 Apt Elev 1243
--	------------------------	---

VOR RWY 4R
CHANDLER MUNI (CHD)

When VGSI inoperative, Circling Rwy 4L NA at night.

MISSED APPROACH: Climbing right turn to 6400 via IWA R-242 to SECKA Int and hold.

ATIS 128.325	PHOENIX APP CON 123.7 363.0	CHANDLER TOWER* 126.1 (CTAF) 133.1 (North and West) (South and East)	GND CON 124.4	UNICOM 122.95
------------------------	---------------------------------------	--	-------------------------	-------------------------



CATEGORY	A	B	C	D
S-4R	1680-1	440 (500-1)	1680-1¼ 440 (500-1¼)	NA
CIRCLING	1720-1 477 (500-1)	1760-1 517 (600-1)	1760-1½ 517 (600-1½)	NA

REIL Rwy 4R and 22L					
MIRL Rwy 4L-22R and 4R-22L					
FAF to MAP 5.3 NM					
Knots	60	90	120	150	180
Min:Sec	5:18	3:32	2:39	2:07	1:46

SW-4, 10 JUL 2025 to 07 AUG 2025

SW-4, 10 JUL 2025 to 07 AUG 2025

CHANDLER, ARIZONA

AL-6494 (FAA)

25219

VORTAC IWA 113.3 Chan 80	APP CRS 062°	Rwy Ldg TDZE 1240 Apt Elev 1243
--	------------------------	---

VOR RWY 4R
CHANDLER MUNI (CHD)

When VGSI inoperative, Circling Rwy 4L NA at night.	MISSED APPROACH: Climbing right turn to 6400 via IWA R-242 to SECKA INT and hold.
---	---

ATIS 128.325	PHOENIX APP CON 123.7 363.0	CHANDLER TOWER ★ 126.1 (CTAF) (N and W) 133.1 (S and E)	GND CON 124.4	UNICOM 122.95
------------------------	---------------------------------------	---	-------------------------	-------------------------

