

CHANDLER, ARIZONA

AL-6494 (FAA)

24193

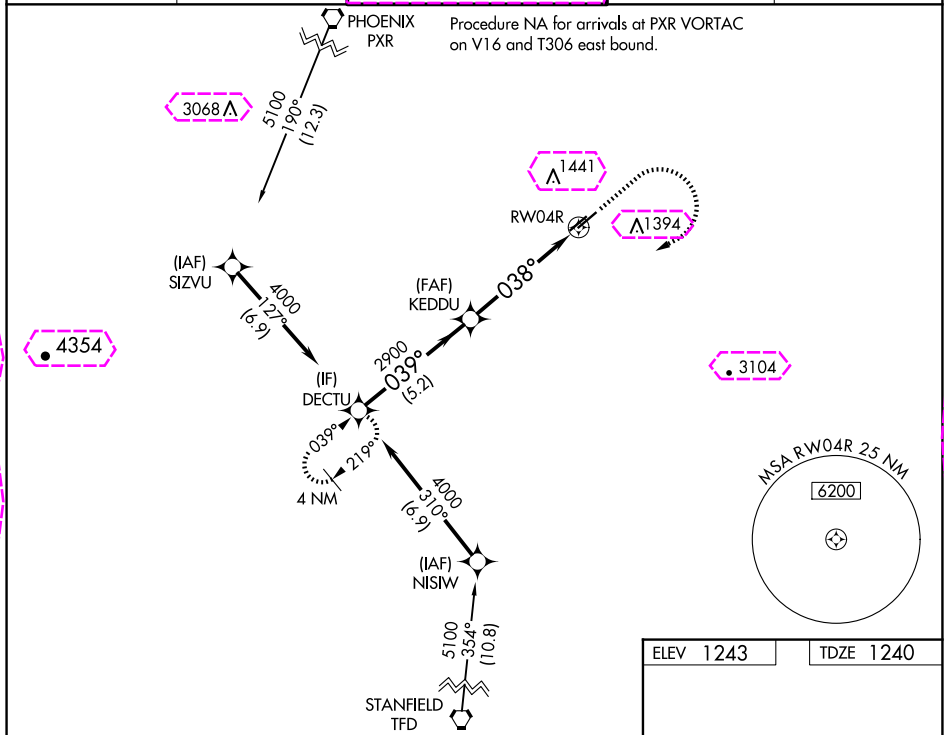
WAAS CH <b>93544</b> <b>W04A</b>	APP CRS <b>038°</b>	Rwy Idg TDZE <b>1240</b> Apt Elev <b>1243</b>	<b>4870</b>
--	------------------------	---	-------------

# RNAV (GPS) RWY 4R

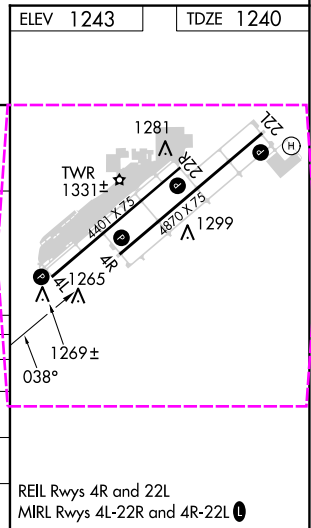
CHANDLER MUNI (CHD)

RNP APCH - GPS. ▼ For uncompensated Baro-VNAV systems, LNAV/VNAV NA below -17°C or above 54°C.	MISSED APPROACH: (Do not exceed 210K until DECTU) Climb to 2200 then climbing right turn to 4000 direct to DECTU and hold.
--	---

ATIS <b>128.325</b>	PHOENIX APP CON <b>123.7 363.0</b>	CHANDLER TOWER ★ <b>126.1 (CTAF) 133.1</b> (North and West) (South and East)	GND CON <b>124.4</b>	UNICOM <b>122.95</b>
------------------------	---------------------------------------	--	-------------------------	-------------------------



	DECTU		KEDDU		2200	4000	DECTU
	4000		2900		2200	4000	DECTU
	GP 3.00°		2900		1.1 NM to RWY 4R		
	TCH 39		2900		RWY 4R		
		5.2 NM		4 NM	1.1 NM		
CATEGORY	A	B	C	D			
LPV DA	1490-3/4	250 (300-3/4)		NA			
LNAV/VNAV DA	1640-1 1/8	400 (400-1 1/8)		NA			
LNAV MDA	1640-1	400 (400-1)	1640-1 1/8	NA			
	1700-1	1760-1	1760-1 1/2	NA			
	457 (500-1)	517 (600-1)	517 (600-1 1/2)				



CHANDLER, ARIZONA  
Amdt 1 02DEC21

33°16'N-111°49'W

# CHANDLER MUNI (CHD)

## RNAV (GPS) RWY 4R

SW-4, 10 JUL 2025 to 07 AUG 2025

SW-4, 10 JUL 2025 to 07 AUG 2025

CHANDLER, ARIZONA

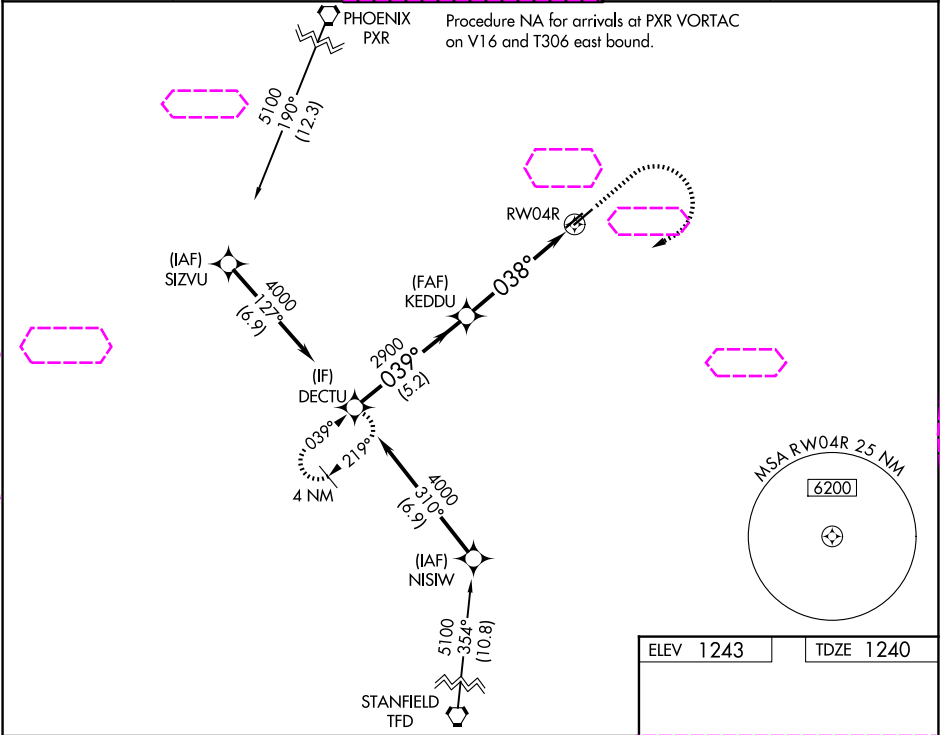
AL-6494 (FAA)

25219

WAAS CH <b>93544</b> <b>W04A</b>	APP CRS <b>038°</b>	Rwy Ldg TDZE <b>1240</b> Apt Elev <b>1243</b>	<b>4870</b>
--	------------------------	---	-------------

**RNAV (GPS) RWY 4R**  
CHANDLER MUNI (CHD)

RNP APCH - GPS.		MISSED APPROACH: (Do not exceed 210K until DECTU) Climb to 2200 then climbing right turn to 4000 direct to DECTU and hold.		
▼ For uncompensated Baro-VNAV systems, LNAV/VNAV NA below -17°C or above 54°C.				
ATIS 128.325	PHOENIX APP CON 123.7 363.0	CHANDLER TOWER★ 126.1 (CTAF) (N and W) 133.1 (S and E)	GND CON 124.4	UNICOM 122.95



DECTU		KEDDU		2200	4000	DECTU
4000		2900		1.1 NM to RWY 4R		
GP 3.00° TCH 39		2900		RWY 4R		
5.2 NM		4 NM		1.1 NM		
CATEGORY	A	B	C	D		
LPV DA	1490-3/4		250 (300-3/4)	NA		
LNAV/VNAV DA	1640-1 1/8		400 (400-1 1/8)	NA		
LNAV MDA	1640-1		400 (400-1)	1640-1 1/8 400 (400-1 1/8)		
CIRCLING	1700-1 457 (500-1)	1760-1 517 (600-1)	1760-1 1/2 517 (600-1 1/2)	NA		

