

TWENTYNINE PALMS, CALIFORNIA

AL-6489 (FAA)

25051

VORTAC TNP 114.2 Chan 89	APP CRS 264°	Rwy Idg TDZE 1835 Apt Elev 1888
--	------------------------	---

VOR RWY 26

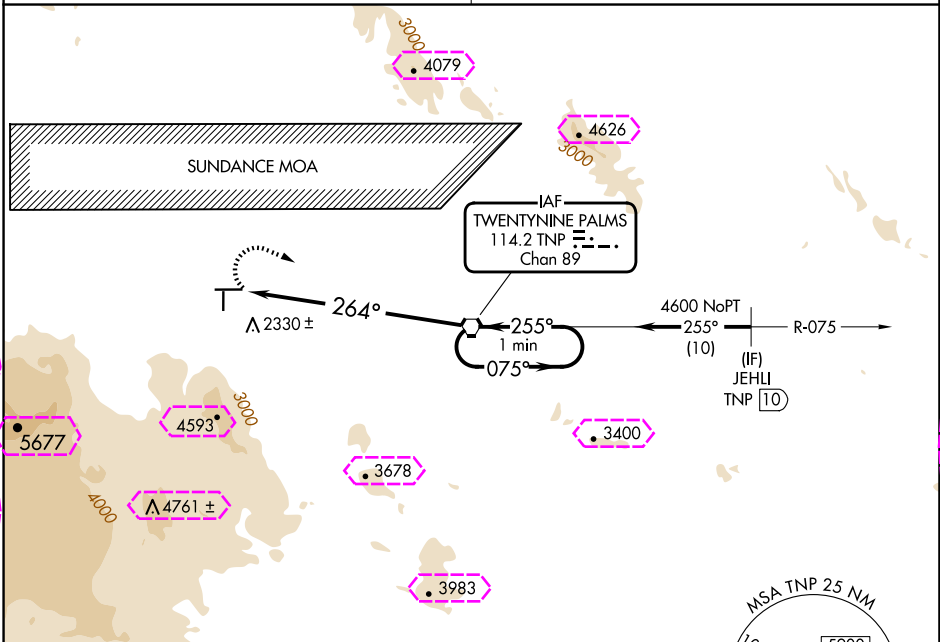
TWENTYNINE PALMS (TNP)

▲ NA Use PSP altimeter setting; when not received, procedure NA.
Circling NA south of Rwy 8-26. Circling Rwy 8, 17 NA at night.

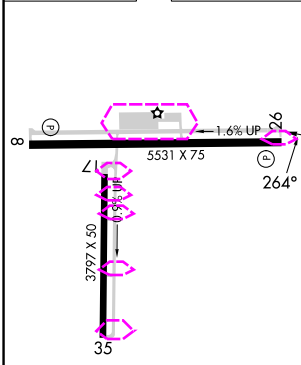
MISSED APPROACH: Climbing right turn to 5900 direct TNP VORTAC and hold, continue climb-in-hold to 5900.

LOS ANGELES CENTER
128.15 285.6



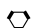
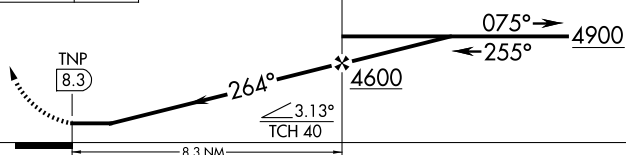

AUNICOM
122.8 (CTAF) 0



ELEV 1888	TDZE 1835
-----------	-----------



REIL Rws 8 and 26	
MIRL Rws 8-26 and 17-35	
FAF to MAP 8.3 NM	
Knots	60 90 120 150 180
Min:Sec	8:18 5:32 4:09 3:19 2:46

				
		TNP VORTAC	One Minute Holding Pattern	
				
CATEGORY	A	B	C	D
S-26	3580-1¼ 1745 (1700-1¼)	3580-1½ 1745 (1700-1½)	NA	
 CIRCLING	3580-1¼ 1692 (1700-1¼)	3580-1½ 1692 (1700-1½)	NA	

TWENTYNINE PALMS, CALIFORNIA
Amdt 2D 20FEB25

34°08'N-115°57'W

TWENTYNINE PALMS (TNP)
VOR RWY 26

SW-3, 10 JUL 2025 to 07 AUG 2025

SW-3, 10 JUL 2025 to 07 AUG 2025

TWENTYNINE PALMS, CALIFORNIA

AL-6489 (FAA)

25219

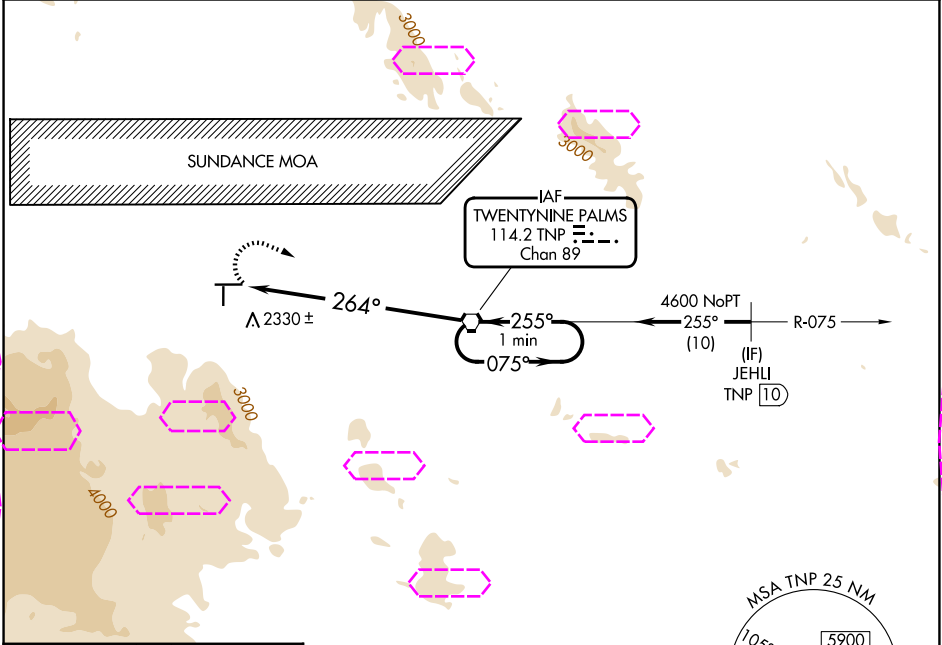
VORTAC TNP 114.2 Chan 89	APP CRS 264°	Rwy Ldg TDZE 1835 Apt Elev 1888
--	------------------------	---

VOR RWY 26
TWENTYNINE PALMS (TNP)

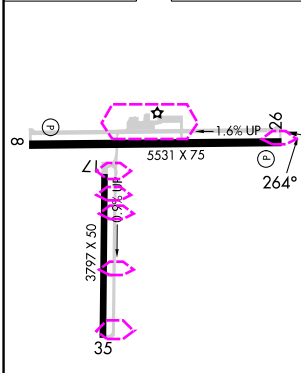
▲ NA Use PSP altimeter setting; when not received, procedure NA.
Circling NA south of Rwy 8-26. Circling Rwy 8, 17 NA at night.

MISSED APPROACH: Climbing right turn to 5900 direct TNP VORTAC and hold, continue climb-in-hold to 5900.


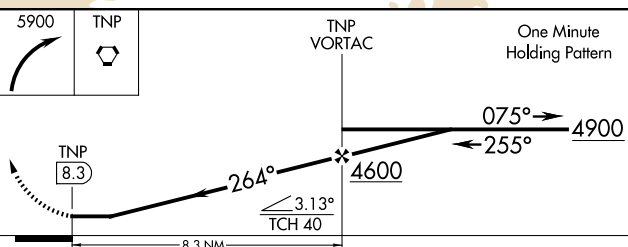
LOS ANGELES CENTER 128.15 285.6	AUNICOM 122.8 (CTAF) 0
---	----------------------------------



ELEV 1888	TDZE 1835
-----------	-----------



REIL Rws 8 and 26	MIRL Rws 8-26 and 17-35
FAF to MAP 8.3 NM	
Knots	60 90 120 150 180
Min:Sec	8:18 5:32 4:09 3:19 2:46

				
5900	TNP	TNP VORTAC	One Minute Holding Pattern	
				
CATEGORY	A	B	C	D
S-26	3580-1¼ 1745 (1700-1¼)	3580-1½ 1745 (1700-1½)	NA	
CIRCLING	3580-1¼ 1692 (1700-1¼)	3580-1½ 1692 (1700-1½)	NA	

TWENTYNINE PALMS, CALIFORNIA
Amdt 2D 20FEB25

34°08'N-115°57'W

TWENTYNINE PALMS (TNP)
VOR RWY 26

SW-3, 07 AUG 2025 to 04 SEP 2025

SW-3, 07 AUG 2025 to 04 SEP 2025