

TWENTYNINE PALMS, CALIFORNIA

AL-6489 (FAA)

25051

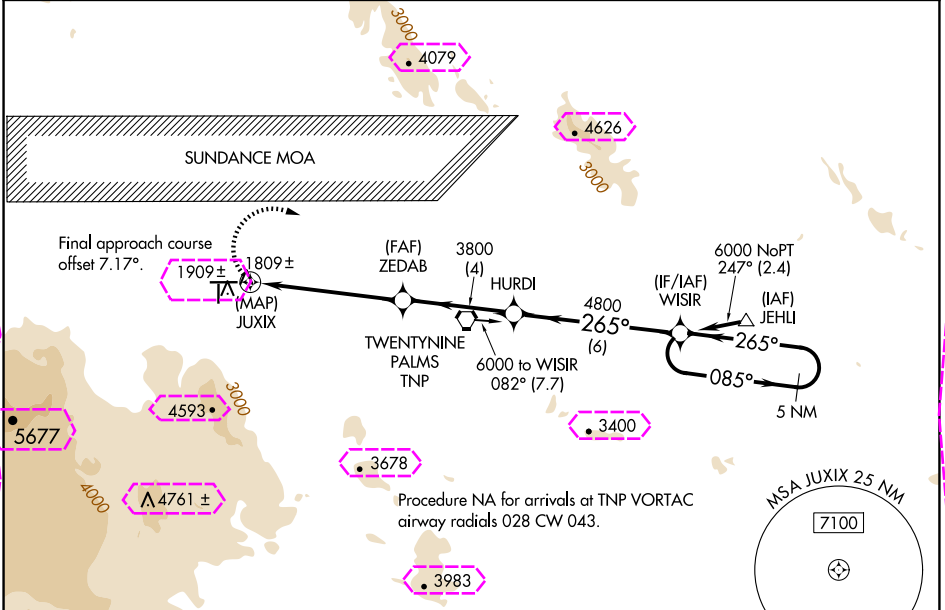
WAAS CH 70634 W26A	APP CRS 265°	Rwy Idg TDZE Apt Elev	5531 1835 1888
--	------------------------	-----------------------------	---

RNAV (GPS) RWY 26

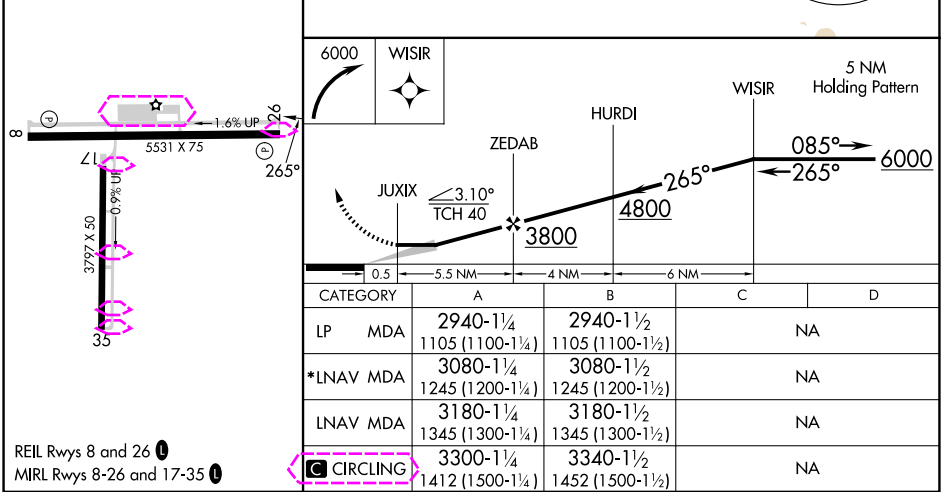
TWENTYNINE PALMS (TNP)

RNP APCH - GPS.	MISSED APPROACH: Climbing right turn to 6000 direct WISIR and hold.
Use PSP altimeter setting; when not received, procedure NA. Circling NA south of Rwy 8-26. Circling Rwy 8, 17 NA at night. *Missed approach requires minimum climb of 425 feet per NM to 3900.	

LOS ANGELES CENTER 128.15 285.6	AUNICOM 122.8 (CTAF) 0
---	----------------------------------



ELEV 1888	TDZE 1835
-----------	-----------



REIL Rws 8 and 26 0
MIRL Rws 8-26 and 17-35 0

C CIRCLING	3300-1¼ 1412 (1500-1¼)	3340-1½ 1452 (1500-1½)	NA
-------------------	---------------------------	---------------------------	----

TWENTYNINE PALMS, CALIFORNIA
Amdt 2C 20FEB25

34°08'N-115°57'W

RNAV (GPS) RWY 26

TWENTYNINE PALMS, CALIFORNIA

AL-6489 (FAA)

25219

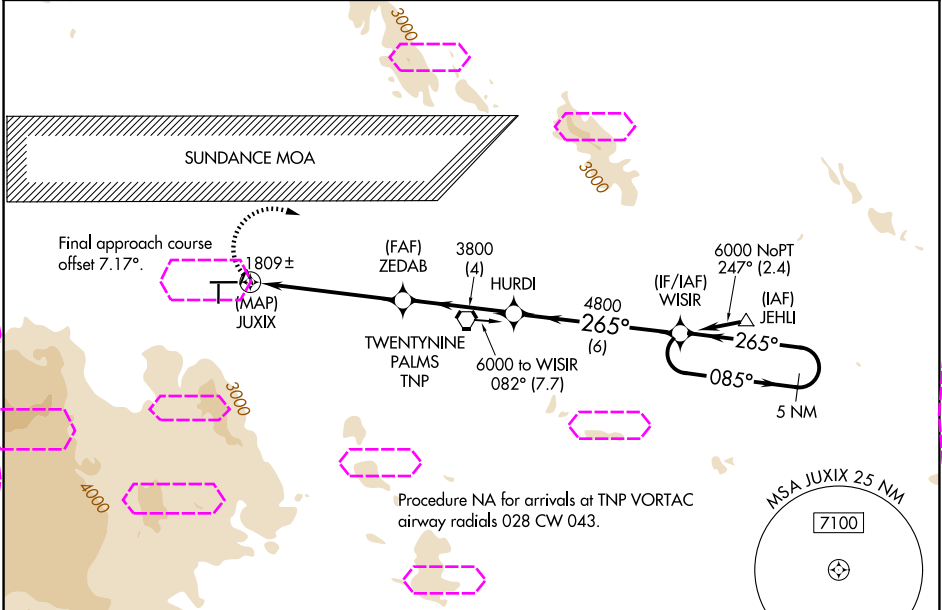
WAAS CH 70634 W26A	APP CRS 265°	Rwy Ldg TDZE 1835 Apt Elev 1888
--	------------------------	---

RNAV (GPS) RWY 26

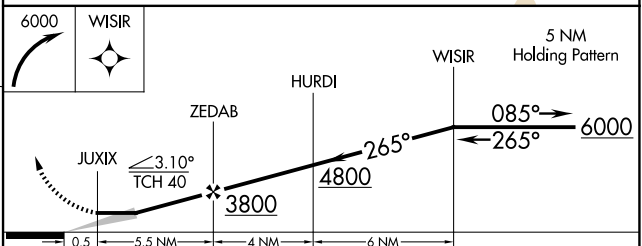
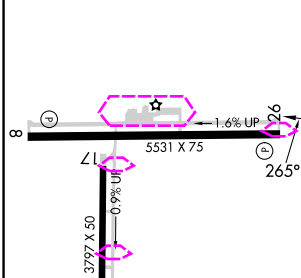
TWENTYNINE PALMS (TNP)

RNP APCH - GPS.	MISSED APPROACH: Climbing right turn to 6000 direct WISIR and hold.
Use PSP altimeter setting: when not received, procedure NA. Circling NA south of Rwy 8-26. Circling Rwy 8, 17 NA at night. *Missed approach requires minimum climb of 425 feet per NM to 3900.	

LOS ANGELES CENTER 128.15 285.6	AUNICOM 122.8 (CTAF) 0
---	----------------------------------



ELEV 1888	TDZE 1835
-----------	-----------



CATEGORY	A	B	C	D
LP MDA	2940-1¼ 1105 (1100-1¼)	2940-1½ 1105 (1100-1½)	NA	
*LNAV MDA	3080-1¼ 1245 (1200-1¼)	3080-1½ 1245 (1200-1½)	NA	
LNAV MDA	3180-1¼ 1345 (1300-1¼)	3180-1½ 1345 (1300-1½)	NA	
CIRCLING	3300-1¼ 1412 (1500-1¼)	3340-1½ 1452 (1500-1½)	NA	

REIL Rwy 8 and 26 0
MIRL Rwy 8-26 and 17-35 0

TWENTYNINE PALMS, CALIFORNIA
Amdt 2C 20FEB25

34°08'N-115°57'W

RNAV (GPS) RWY 26

TWENTYNINE PALMS (TNP)

SW-3, 07 AUG 2025 to 04 SEP 2025

SW-3, 07 AUG 2025 to 04 SEP 2025