

23362

WAAS CH 77516 W35A	APP CRS 355°	Rwy Idg 7000 TDZE 25 Apt Elev 25
--	------------------------	---

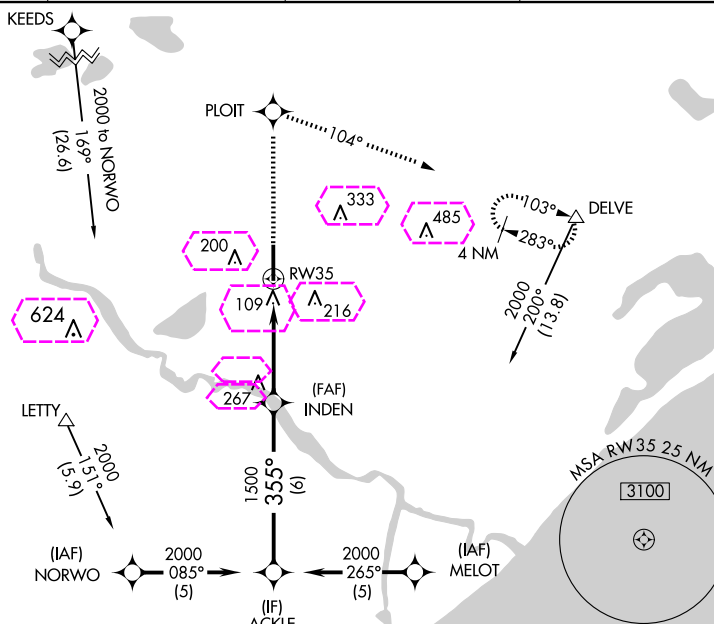

RNAV (GPS) RWY 35
TEXAS GULF COAST RGNL (LBX)

T DME/DME RNP-0.3 NA. Baro-VNAV NA below -16°C (4°F). When local altimeter setting not received, use William P. Hobby altimeter setting and increase all DAs/MDAs 100 feet and Circling Cat D visibility ¼ SM. Baro-VNAV and VDP NA when using William P. Hobby altimeter setting. Circling NA east of Rwy 17-35.

MISSED APPROACH: Climb to 2000 direct PLOIT and right turn via 104° track to DELVE and hold.

ASOS
119.925

HOUSTON APP CON
134.45 284.0

CLNC DEL
125.2UNICOM
123.0 (CTAF) 

VGSI and RNAV glidepath not coincident
(VGSI Angle 3.00/TCH 40).

200C

PLOIT

DEOLVE

ACKLE

INDEN

*LNAV only

Procedure
Turn NA
GP 3.00
TCH 50

2000


55°.

[illegible]

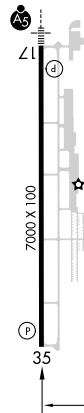
RW

3.4 NM-

1 nm

CATEGORY		A	B	C	D
LPV	DA	275- $\frac{3}{4}$ 250 (300- $\frac{3}{4}$)			
LNAV/ VNAV	DA	428-1 $\frac{1}{2}$ 403 (500-1 $\frac{1}{2}$)			
LNAV	MDA	420-1 395 (400-1)			420-1 $\frac{1}{4}$ 395 (400-1 $\frac{1}{4}$)
		480-1 $\frac{1}{2}$ 455 (500-1 $\frac{1}{2}$)	500-1 $\frac{1}{2}$ 475 (500-1 $\frac{1}{2}$)	620-2 595 (600-2)	

ELEV	25	D	TDZE	25
------	----	----------	------	----

[illegible]

ANGLETON/LAKE JACKSON, TEXAS
Amdt 2B 26MAR20

29°07'N-95°28'W

TEXAS GULF COAST RGNL (LBX)
RNAV (GPS) RWY 35

