

WAAS CH 70316 W17A	APP CRS 175°	Rwy Idg 7000 TDZE 25 Apt Elev 25
--	------------------------	---

RNAV (GPS) RWY 17

TEXAS GULF COAST RGNL (L.B.X)

RNP APCH - GPS.

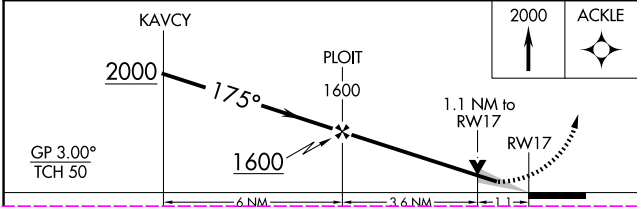
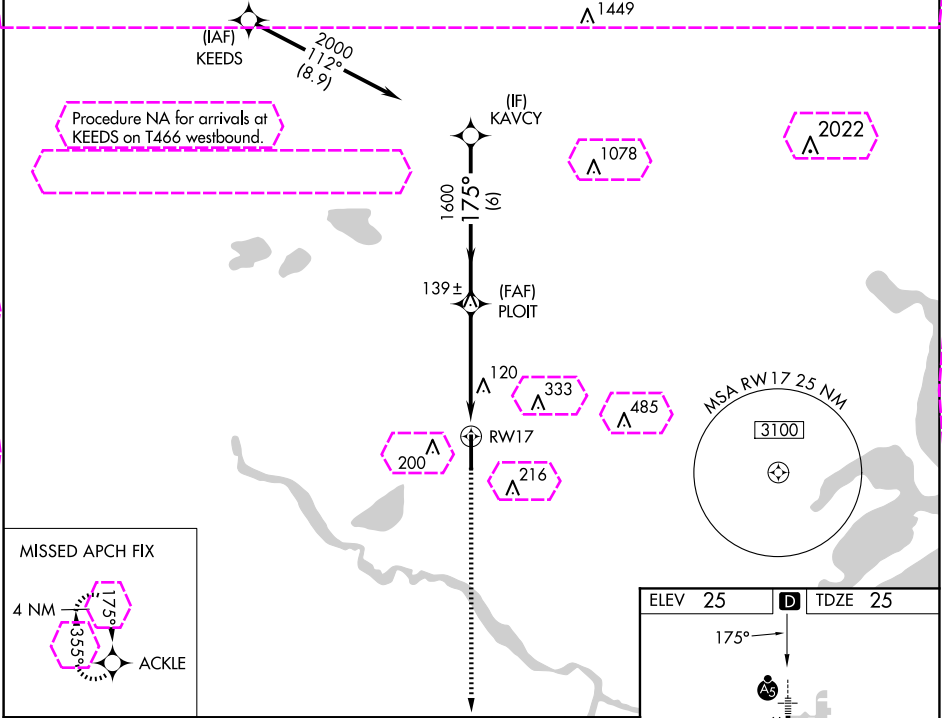
⚠

Circling NA east of Rwy 17-35. Baro-VNAV and VDP NA when using William P. Hobby altimeter setting. For uncompensated Baro-VNAV systems, LNAV/VNAV NA below -16°C or above 54°C. When local altimeter setting not received, use William P. Hobby altimeter setting and increase LPV DA to 363 feet; increase LNAV/VNAV DA to 441 feet and all visibilities ¼ SM; increase all MDAs 100 feet and LNAV visibility Cat C/D ⅓ SM, and Circling visibility Cat D ¼ SM.

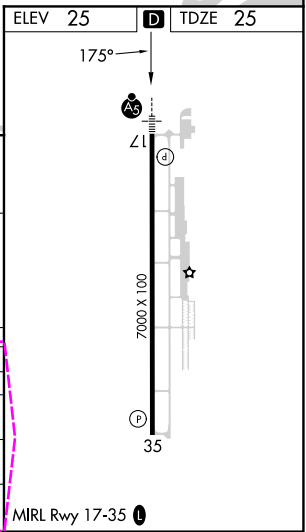
MALSR

MISSED APPROACH: Climb to 2000 direct ACKLE and hold.

ASOS 119.925	HOUSTON APP CON 134.45 284.0	CINC DEL 125.2	UNICOM 123.0 (CTAF) 1
------------------------	--	--------------------------	--



CATEGORY	A	B	C	D
LPV DA		282-1/2	257 (300-1/2)	
LNAV/VNAV DA		360-1/2	335 (400-1/2)	
LNAV MDA	420-1/2	395 (400-1/2)	420-5/8	395 (400-5/8)
CIRCLING	480-1 455 (500-1)	500-1 475 (500-1)	500-1 1/2 475 (500-1 1/2)	620-2 595 (600-2)



ANGLETON/LAKE JACKSON, TEXAS

AL-6453 (FAA)

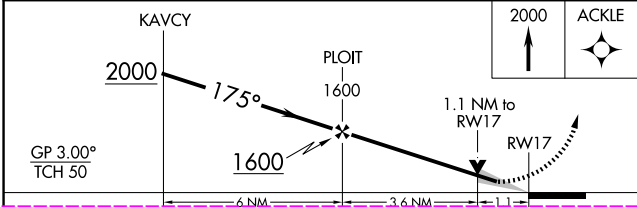
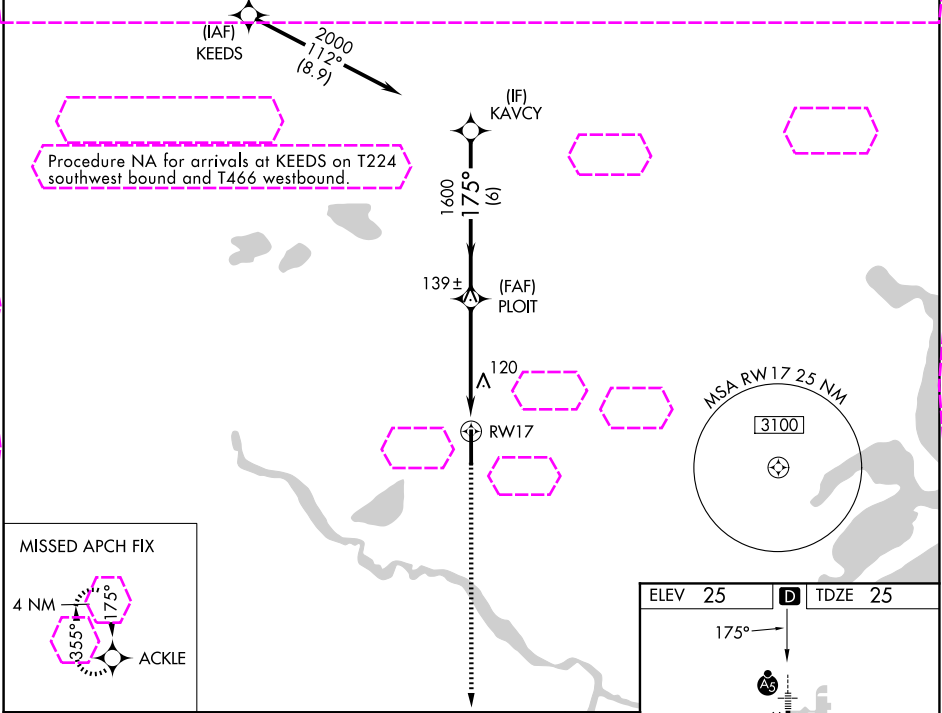
25219

WAAS CH 70316 W17A	APP CRS 175°	Rwy Ldg 7000 TDZE 25 Apt Elev 25
--	------------------------	---

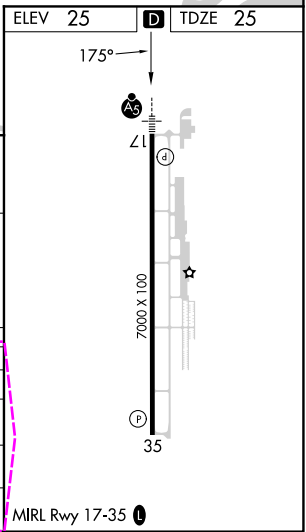
RNAV (GPS) RWY 17

TEXAS GULF COAST RGNL (L.B.X)

RNP APCH - GPS.		MALSR	MISSED APPROACH: Climb to 2000 direct ACKLE and hold.
ASOS 119,925	HOUSTON APP CON 134.45 284.0	CLNC DEL 125.2	UNICOM 123.0 (CTAF) 0



CATEGORY	A	B	C	D
LPV DA		282-1/2	257 (300-1/2)	
LNNAV/VNAV DA		360-1/2	335 (400-1/2)	
LNNAV MDA	420-1/2	395 (400-1/2)	420-5/8	395 (400-5/8)
CIRCLING	480-1 455 (500-1)	500-1 475 (500-1)	500-1 1/2 475 (500-1 1/2)	620-2 595 (600-2)



ANGLETON/LAKE JACKSON, TEXAS

Amk 2D 07AUG25

29°07'N-95°28'W

TEXAS GULF COAST RGNL (L.B.X)

RNAV (GPS) RWY 17