

ANGLETON/LAKE JACKSON, TEXAS

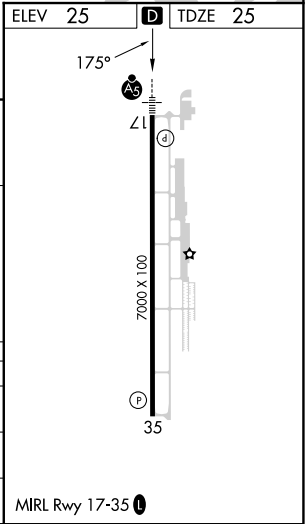
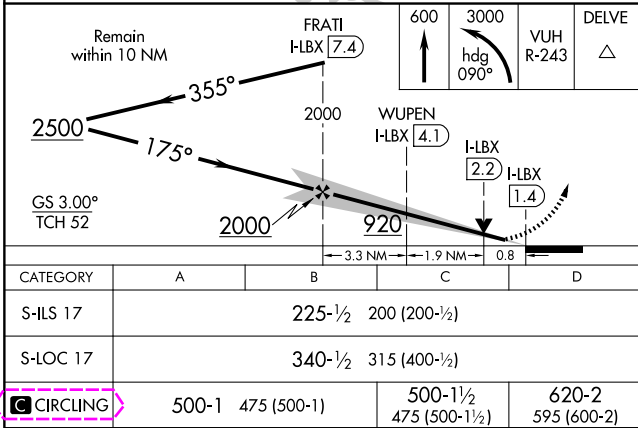
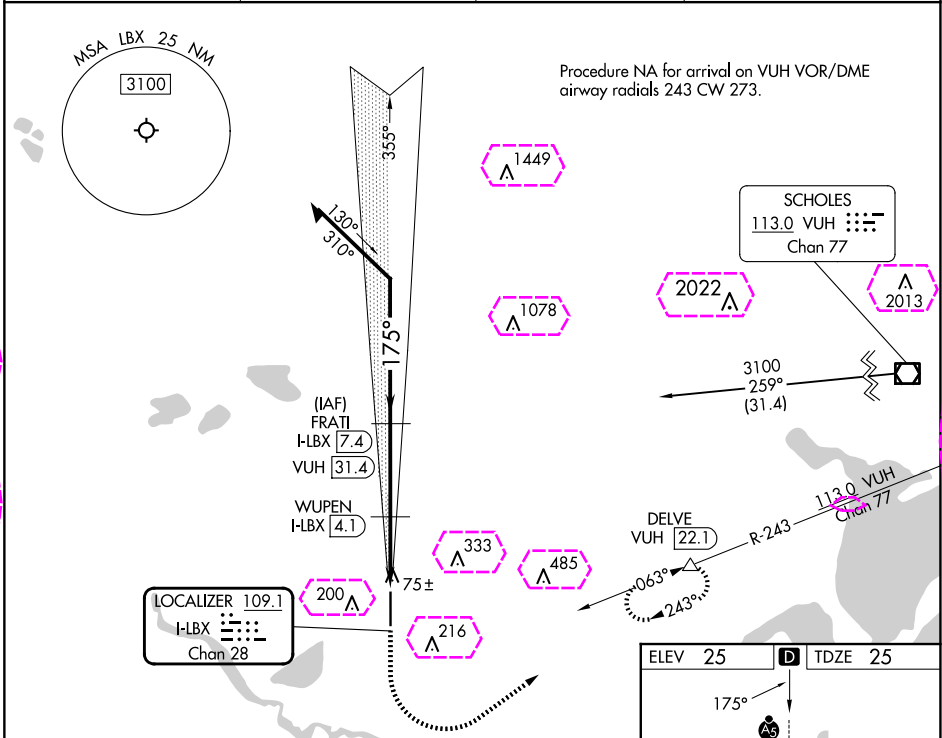
AL-6453 (FAA)

23362

LOC/DME I-LBX 109.1 Chan 28	APP CRS 175°	Rwy Idg 7000 TDZE 25 Apt Elev 25
---	------------------------	---

ILS or LOC RWY 17
TEXAS GULF COAST RGNL (LBX)

DME required. ▼ For inop ALS, increase S-LOC 17 Cat C/D visibility to ½ SM. Circling NA east of Rwy 17-35. ▲ NA		MALSR 45	MISSED APPROACH: Climb to 600 then climbing left turn to 3000 on heading 090° and VUH VOR/DME R-243 to DELVE/VUH 22.1 DME and hold, continue climb-in-hold to 3000.
ASOS 119.925	HOUSTON APP CON 134.45 284.0	CLNC DEL 125.2	UNICOM 123.0 (CTAF) 0



ANGLETON/LAKE JACKSON, TEXAS

AL-6453 (FAA)

25219

LOC/DME I-LBX 109.1 Chan 28	APP CRS 175°	Rwy Ldg 7000 TDZE 25 Apt Elev 25
---	------------------------	---

ILS or LOC RWY 17
TEXAS GULF COAST RGNL (LBX)

DME required. ▼ For inop ALS, increase S-LOC 17 Cat C/D visibility to ½ SM. Circling NA east of Rwy 17-35. ▲ NA		MALSR 45	MISSED APPROACH: Climb to 600 then climbing left turn to 3000 on heading 090° and VUH VOR/DME R-243 to DELVE/VUH 22.1 DME and hold, continue climb-in-hold to 3000.
ASOS 119.925	HOUSTON APP CON 134.45 284.0	CLNC DEL 125.2	UNICOM 123.0 (CTAF) 0

