

PALM COAST, FLORIDA

AL-6440 (FAA)

23110

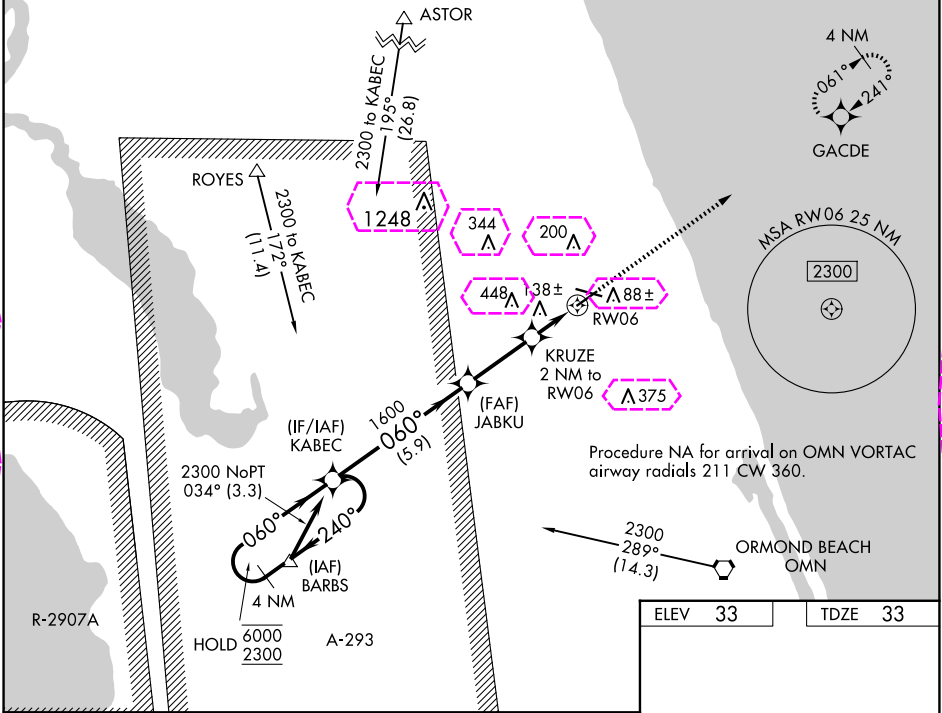
WAAS CH 49209 W06A	APP CRS 060°	Rwy Idg 5001 TDZE 33 Apt Elev 33
--	------------------------	---

RNAV (GPS) RWY 6

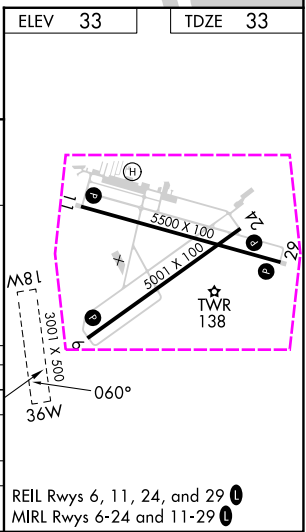
FLAGLER EXEC (FIN)

RNP APCH-GPS.		MISSED APPROACH: Climb to 2300 direct GACDE and hold.	
<p>⚠ Circling NA to Rwy 18W and 36W. Circling Rwy 11, 29 NA at night. Rwy 6 helicopter visibility reduction below ¼ SM NA. For uncompensated Baro-VNAV systems, LNAV/VNAV NA below -15°C or above 54°C.</p>			

ATIS 128.325	DAYTONA APP CON 125.8 269.075	FLAGLER TOWER ★ 118.95 (CTAF) 0	GND CON 121.75	CLNC DEL 121.75	UNICOM 123.0
------------------------	---	---	--------------------------	---------------------------	------------------------



4 NM Holding Pattern		KABEC		2300 GACDE	
6000 ← 240°		JABKU 1600		KRUZE 2 NM to RWY 06	
2300 → 060°		1600		1 NM to RWY 06	
GP 3.00°		700		RWY 06	
TCH 41		5.9 NM		1 NM	
CATEGORY	A	B	C	D	
LPV DA		312-7/8	279 (300-7/8)		
LNAV/VNAV DA		292-3/4	259 (300-3/4)		
LNAV MDA		400-1	367 (400-1)		
CIRCLING	500-1	467 (500-1)	760-2 727 (800-2)	760-2 1/4 727 (800-2 1/4)	



PALM COAST, FLORIDA
Amdt 2C 20APR23

29°28'N-81°12'W

FLAGLER EXEC (FIN)
RNAV (GPS) RWY 6

PALM COAST, FLORIDA

AL-6440 (FAA)

25219

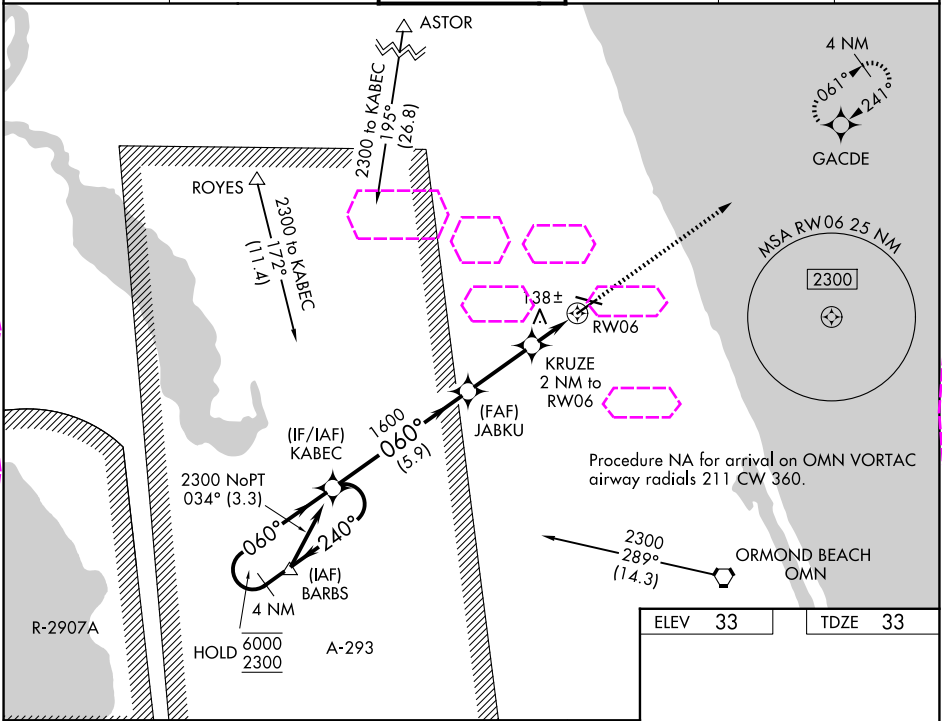
WAAS CH 49209 W06A	APP CRS 060°	Rwy Ldg TDZE 33 Apt Elev 33
--	------------------------	---

RNAV (GPS) RWY 6

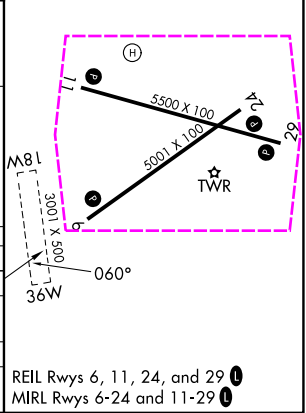
FLAGLER EXEC (FIN)

RNP APCH-GPS.	MISSED APPROACH: Climb to 2300 direct GACDE and hold.
---------------	---

ATIS 128.325	DAYTONA APP CON 125.8 269.075	FLAGLER TOWER ★ 118.95 (CTAF) 0	GND CON 121.75	CLNC DEL 121.75	UNICOM 123.0
------------------------	---	---	--------------------------	---------------------------	------------------------



<div>4 NM Holding Pattern</div> <div><div>6000</div><div>2300</div></div> <div>GP 3.00° TCH 41</div>		<div>KABEC</div>	<div>JABKU</div> <div>1600</div>	<div>KRUZE</div> <div>2 NM to RW06</div>	<div>2300</div> <div><div>↑</div></div>	<div>GACDE</div> <div><div>✦</div></div>
<div><div>← 240°</div><div>060° →</div></div>		<div>060°</div>	<div>1600</div>	<div>700</div>	<div>1 NM to RW06</div>	<div>RW06</div>
		<div>5.9 NM</div>	<div>2.8 NM</div>	<div>1 NM</div>	<div>1 NM</div>	
CATEGORY	A	B	C	D		
LPV DA	312-7/8 279 (300-7/8)					
LNAV/VNAV DA	292-3/4 259 (300-3/4)					
LNAV MDA	400-1 367 (400-1)					
CIRCLING	500-1 467 (500-1)		760-2 727 (800-2)		760-2 1/4 727 (800-2 1/4)	



SE-3, 07 AUG 2025 to 04 SEP 2025

SE-3, 07 AUG 2025 to 04 SEP 2025