

PALM COAST, FLORIDA

AL-6440 (FAA)

23110

WAAS CH 56243 W29A	APP CRS 292°	Rwy Idg 5500 TDZE 33 Apt Elev 33
--	------------------------	---

RNAV (GPS) RWY 29

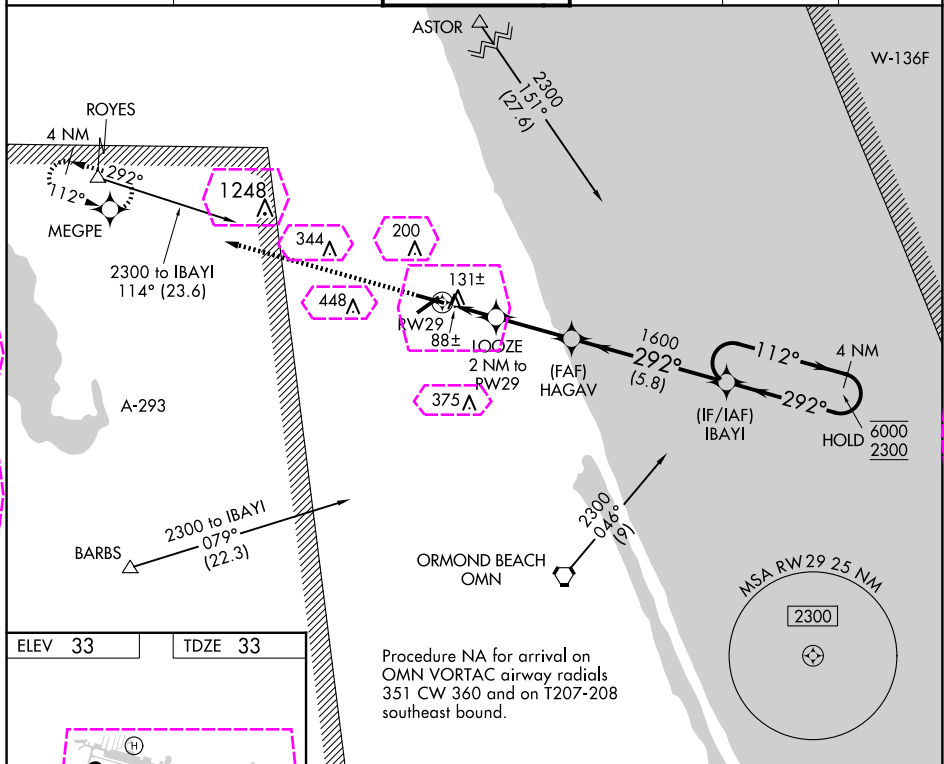
FLAGLER EXEC (FIN)

RNP APCH.

- T** Circling NA to Rwy 18W and 36W. Rwy 29
A helicopter visibility reduction below $\frac{3}{4}$ SM NA.

MISSED APPROACH: Climb to 2300 direct MEGPE and hold.

ATIS 128.325	DAYTONA APP CON 125.8 269.075	FLAGLER TOWER ★ 118.95 (CTAF) 0	GND CON 121.75	CLNC DEL 121.75	UNICOM 123.0
------------------------	---	---	--------------------------	---------------------------	------------------------



MEGPE

2300

4 NM Holding Pattern

IBAYI

112° → 6000
← 292° 2300

HAGAV

3.00° TCH 40

292°

1600

700

1 NM to RW29

1 NM

2.8 NM

5.8 NM

5500 X 100

5001 X 100

TWR 138

292°

36W

3001 X 500

REIL Rwy 6, 11, 24, and 29
MIRL Rwy 6-24 and 11-29

CATEGORY	A	B	C	D
LP MDA	400-1 367 (400-1)			
LNAV MDA	440-1	407 (500-1)	440-1½	407 (500-1½)
CIRCLING	500-1	467 (500-1)	760-2 727 (800-2)	760-2¼ 727 (800-2¼)

PALM COAST, FLORIDA

Amdt 1B 05NOV20

FLAGLER EXEC (FIN)

29°28'N-81°12'W

RNAV (GPS) RWY 29

SE-3, 10 JUL 2025 to 07 AUG 2025

SE-3, 10 JUL 2025 to 07 AUG 2025

PALM COAST, FLORIDA

AL-6440 (FAA)

25219

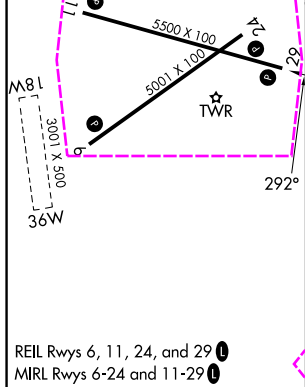
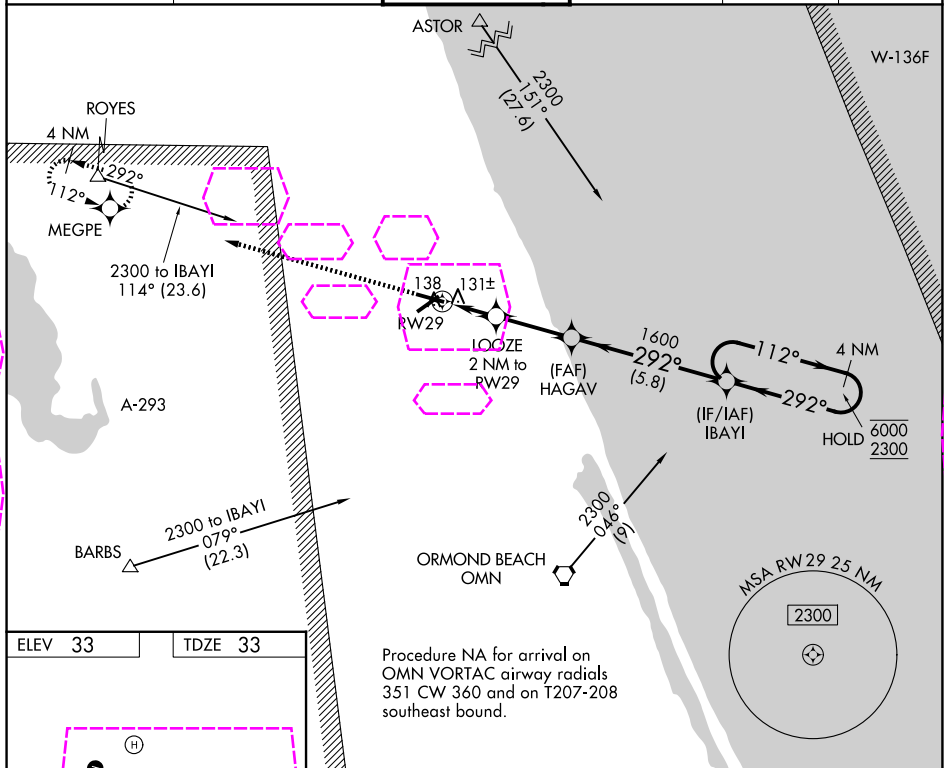
WAAS CH 56243 W29A	APP CRS 292°	Rwy Ldg 5500 TDZE 33 Apt Elev 33
--	------------------------	---



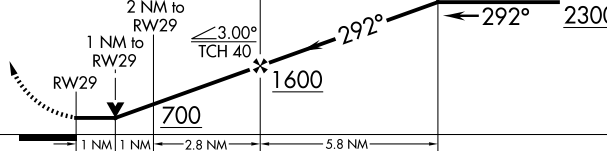
RNAV (GPS) RWY 29

FLAGLER EXEC (FIN)

RNP APCH. Circling NA to Rwy 18W and 36W. Rwy 29 helicopter visibility reduction below $\frac{3}{4}$ SM NA.	MISSED APPROACH: Climb to 2300 direct MEGPE and hold.
--	---

ATIS 128.325	DAYTONA APP CON 125.8 269.075	FLAGLER TOWER ★ 118.95 (CTAF) 0	GND CON 121.75	CLNC DEL 121.75	UNICOM 123.0
------------------------	---	---	--------------------------	---------------------------	------------------------



2300	MEGPE	IBAYI 4 NM Holding Pattern			
					
					
CATEGORY		A	B	C	D
LP	MDA	400-1 367 (400-1)			
LNAV	MDA	440-1	407 (500-1)	440-1½	407 (500-1½)
CIRCLING		500-1	467 (500-1)	760-2 727 (800-2)	760-2¼ 727 (800-2¼)

PALM COAST, FLORIDA
Amdt 1B 05NOV20

29°28'N-81°12'W

RNAV (GPS) RWY 29