

PALM COAST, FLORIDA

AL-6440 (FAA)

23110

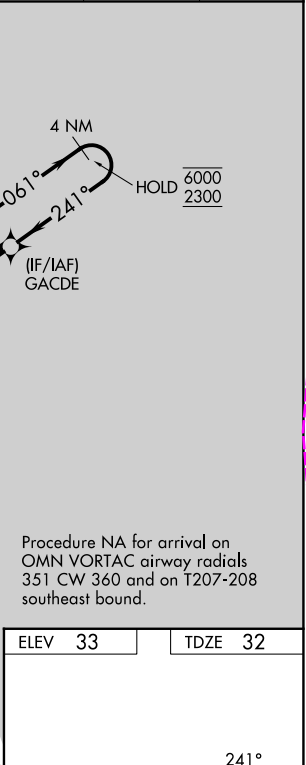
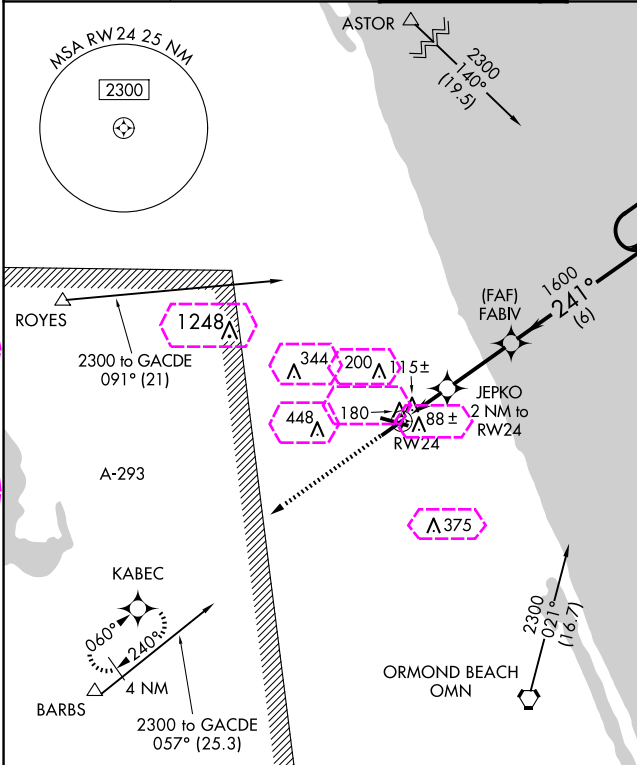
WAAS CH 86742 W24A	APP CRS 241°	Rwy Idg TDZE Apt Elev	5001 32 33
--	------------------------	-----------------------------	---------------------------------------

RNAV (GPS) RWY 24

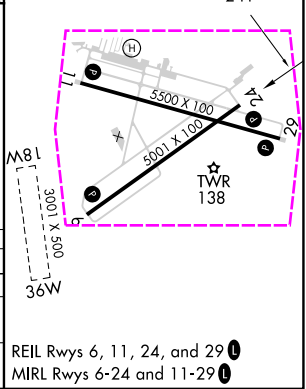
FLAGLER EXEC (FIN)

RNP APCH.	MISSED APPROACH: Climb to 2300 direct KABEC and hold.
<p>⚠ Circling Rwy 11, 29 NA at night. Rwy 24 helicopter visibility reduction below ¾ SM NA. Circling NA to Rwys 18W and 36W.</p>	

ATIS 128.325	DAYTONA APP CON 125.8 269.075	FLAGLER TOWER ★ 118.95 (CTAF) 0	GND CON 121.75	CLNC DEL 121.75	UNICOM 123.0
------------------------	---	---	--------------------------	---------------------------	------------------------



CATEGORY	A	B	C	D
LP MDA	380-1	348 (400-1)		
LNAV MDA	440-1 408 (500-1)	440-1½ 408 (500-1½)		
CIRCLING	500-1 467 (500-1)	760-2 727 (800-2)	760-2¼ 727 (800-2¼)	



PALM COAST, FLORIDA
Amdt 1A 23APR20

29°28'N-81°12'W

RNAV (GPS) RWY 24

SE-3, 07 AUG 2025 to 04 SEP 2025