

PALM COAST, FLORIDA

AL-6440 (FAA)

23110

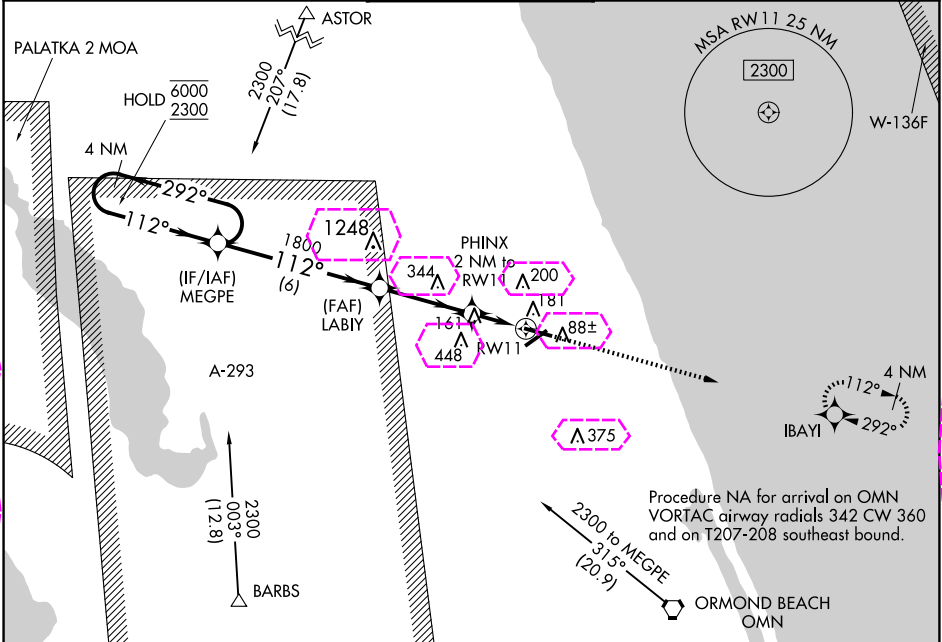
WAAS CH 66009 W11A	APP CRS 112°	Rwy Idg TDZE 33 Apt Elev 33
--	------------------------	---

RNAV (GPS) RWY 11

FLAGLER EXEC (FIN)

RNP APCH.	MISSED APPROACH: Climb to 2300 direct IBAYI and hold.
▼ Circling NA to Rwy 18W and 36W. ▲ Rwy 11 helicopter visibility reduction below ¾ SM NA.	

ATIS 128.325	DAYTONA APP CON 125.8 269.075	FLAGLER TOWER ★ 118.95 (CTAF) 0	GND CON 121.75	CLNC DEL 121.75	UNICOM 123.0
------------------------	---	---	--------------------------	---------------------------	------------------------



ELEV 33	TDZE 33
---------	---------

4 NM Holding Pattern		MEGPE		LABYI		PHINX 2 NM to RWY 11		1.1 NM to RWY 11		IBAYI	
6000 ← 292°		2300 → 112°		1800		700					
				3.00° TCH 40							
				6 NM		3.4 NM		0.9		1.1	
CATEGORY		A	B	C	D						
LP MDA		420-1	387 (400-1)	420-1½	387 (400-1½)						
LNAV MDA		540-1	507 (600-1)	540-1½	507 (600-1½)						
CIRCLING		540-1	507 (600-1)	760-2 727 (800-2)	760-2¼ 727 (800-2¼)						

REIL Rwy 6, 11 24, and 29 0
MIRL Rwy 6-24 and 11-29 0

The inset chart shows the final approach segment with altitudes of 5500 x 100, 5001 x 100, and 3001 x 500. It also shows the TWR 138 and the 36W heading.

PALM COAST, FLORIDA
Amdt 2A 15AUG19

29°28'N-81°12'W

RNAV (GPS) RWY 11

FLAGLER EXEC (FIN)

PALM COAST, FLORIDA

AL-6440 (FAA)

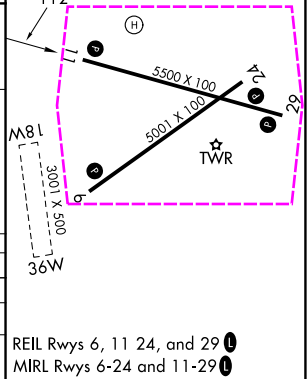
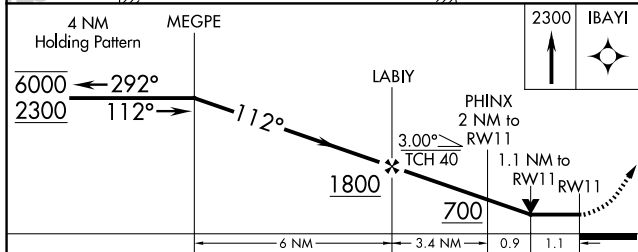
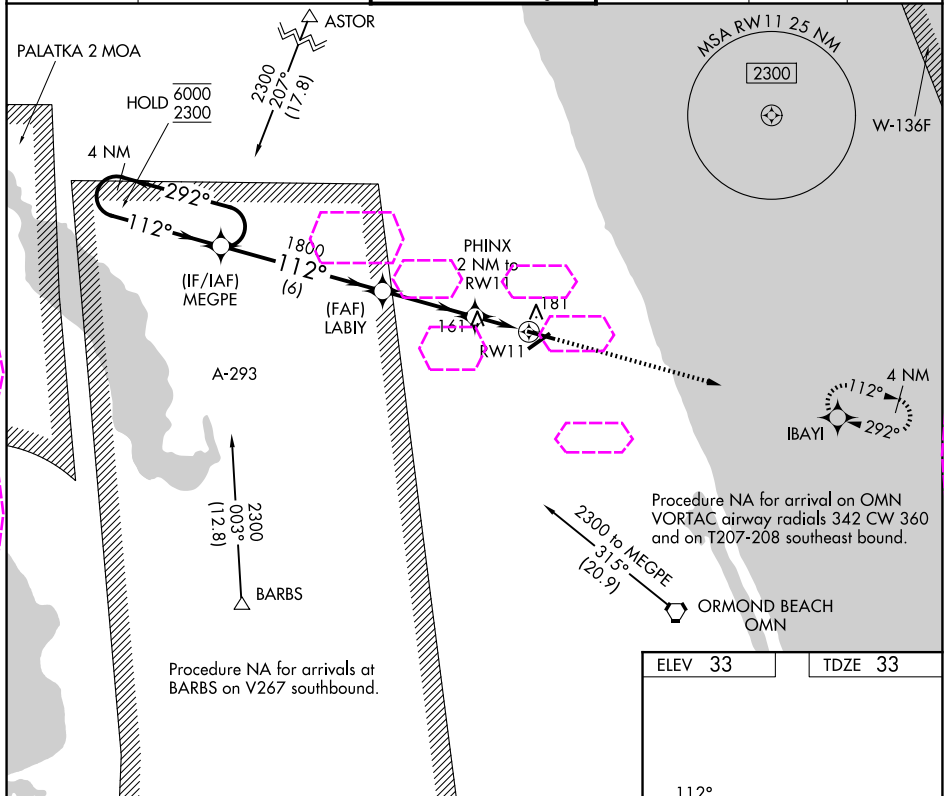
25219

WAAS CH 66009 W11A	APP CRS 112°	Rwy Ldg TDZE 33 Apt Elev 33
--	------------------------	---

RNAV (GPS) RWY 11

FLAGLER EXEC (FIN)

RNP APCH.		MISSED APPROACH: Climb to 2300 direct IBAYI and hold.			
ATIS 128.325	DAYTONA APP CON 125.8 269.075	FLAGLER TOWER ★ 118.95 (CTAF) 0	GND CON 121.75	CLNC DEL 121.75	UNICOM 123.0



CATEGORY	A	B	C	D
LP MDA	420-1 387 (400-1)	420-1 387 (400-1)	420-1 387 (400-1)	420-1 387 (400-1)
LNAV MDA	540-1 507 (600-1)	540-1 507 (600-1)	540-1 507 (600-1)	540-1 507 (600-1)
CIRCLING	540-1 507 (600-1)	760-2 727 (800-2)	760-2 727 (800-2)	760-2 727 (800-2)

PALM COAST, FLORIDA
Amdt 2A 15AUG19

29°28'N-81°12'W

RNAV (GPS) RWY 11

FLAGLER EXEC (FIN)

SE-3, 07 AUG 2025 to 04 SEP 2025

SE-3, 07 AUG 2025 to 04 SEP 2025