

EAGLE, COLORADO

AL-6403 (FAA-O)

25163

| | | |
|--|------------------------|--|
| WAAS CH 75965 W25B | APP CRS 253° | Rwy Ldg TDZE 8000 Apt Elev 6540 6547 |
|--|------------------------|--|

RNAV (GPS) Y RWY 25

EAGLE COUNTY RGNL (EGE)

RNP APCH-GPS.

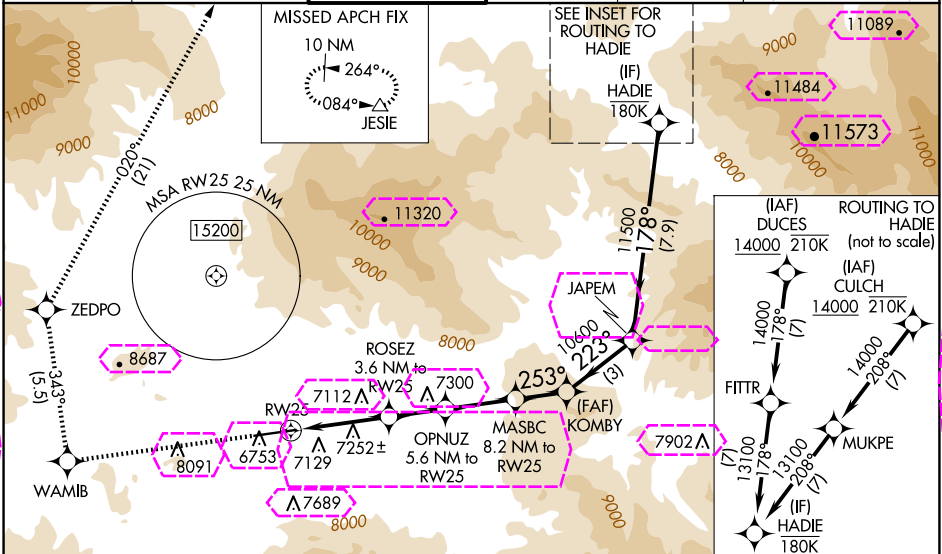
When local altimeter setting not received, procedure NA. Rwy 25 helicopter visibility reduction below ¾ SM NA. Circling NA south of Rwy 25-7. Circling Rwy 7 NA at night. Inop table does not apply to LP and LNAV Cat C. For inop ALS, increase LP (*) Cat A visibility to 1 SM and Cat C visibility to 2 ½ SM.

MALS R

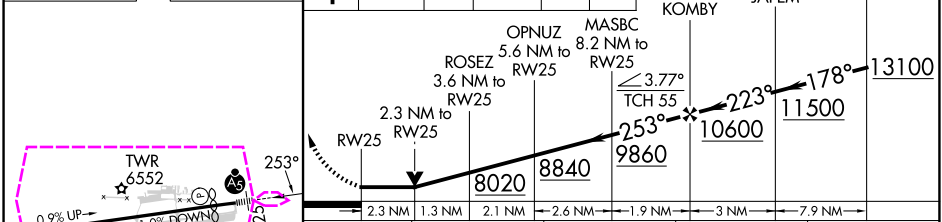
AS

MISSED APPROACH: (Do not exceed 165K until ZEDPO) Climb to 15000 on the RNAV missed approach route to JESIE and hold, continue climb in-hold to 15000. *Missed approach requires minimum climb of 318 feet per NM to 8700. #Missed approach requires minimum climb of 288 feet per NM to 8900.

| | | | | | |
|------------------------|--------------------------------------|--|-------------------------|---------------------------|---|
| ATIS 135.575 | DENVER CENTER 128.65 282.2 | EAGLE TOWER ★ 119.8 (CTAF) 0 | GND CON 121.8 | CLNC DEL 124.75 | DENVER CLNC DEL 124.75 (When lower closed) |
|------------------------|--------------------------------------|--|-------------------------|---------------------------|---|



| | | | | | | | | |
|-----------|-----------|---|-------|---------|-------|---------|-------|---|
| ELEV 6547 | TDZE 6540 | ↑ | WAMIB | tr 343° | ZEDPO | tr 020° | JESIE | △ |
|-----------|-----------|---|-------|---------|-------|---------|-------|---|



| CATEGORY | A | B | C | D |
|-----------|---------------------------|---------------------------|---------------------------|----|
| LP MDA* | 7320-¾ | 780 (800-¾) | 7320-1¾ 780 (800-1¾) | NA |
| LP MDA | 7780-¾ 1240 (1300-¾) | 7800-1 1260 (1300-1) | 7820-3 1280 (1300-3) | NA |
| LNAV MDA# | 7580-¾ 1040 (1100-¾) | 7580-1 1040 (1100-1) | 7580-2½ 1040 (1100-2½) | NA |
| LNAV MDA | 7940-¾ 1400 (1400-¾) | 7960-1 1420 (1500-1) | 7980-3 1440 (1500-3) | NA |
| CIRCLING | 7940-1¼ 1393 (1400-1¼) | 8020-1½ 1473 (1500-1½) | 8580-3 2033 (2100-3) | NA |

EAGLE, COLORADO
Orig-A 16MAY24

39°39'N-106°55'W

RNAV (GPS) Y RWY 25

SW-1, 10 JUL 2025 to 07 AUG 2025

SW-1, 10 JUL 2025 to 07 AUG 2025

RNAV (GPS) Y RWY 25

EAGLE COUNTY RGNL (EGE)

| | | |
|--|------------------------|---|
| WAAS CH 75965 W25B | APP CRS 253° | Rwy Ldg 8000 TDZE 6540 Apt Elev 6547 |
|--|------------------------|---|

RNP APCH-GPS.

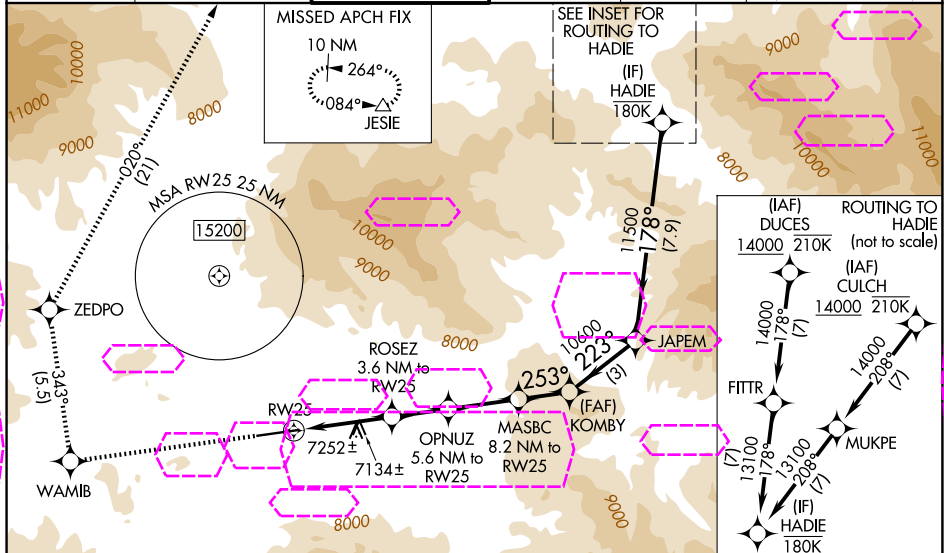
When local alimeter setting not received, procedure NA. Rwy 25 helicopter visibility reduction below $\frac{3}{4}$ SM NA. Circling NA south of Rwy 25-7. Circling Rwy 7 NA at night. Inop table does not apply to LP and LNAV Cat C. For inop ALS, increase LP (*) Cat A visibility to 1 SM and Cat C visibility to $2\frac{1}{2}$ SM.

MALSR



MISSED APPROACH: (Do not exceed 165K until ZEDPO)
Climb to 15000 on the RNAV missed approach route to JESIE and hold, continue climb in-hold to 15000.
*Missed approach requires minimum climb of 318 feet per NM to 8700.
*Missed approach requires minimum climb of 288 feet per NM to 8900.

| | | | | | |
|------------------------|--------------------------------------|--|-------------------------|---------------------------|---|
| ATIS 135.575 | DENVER CENTER 128.65 282.2 | EAGLE TOWER ★ 119.8 (CTAF) 0 | GND CON 121.8 | CLNC DEL 124.75 | DENVER CLNC DEL 124.75 (When tower closed) |
|------------------------|--------------------------------------|--|-------------------------|---------------------------|---|

[illegible]

EAGLE, COLORADO

Orig-A 16MAY24

EAGLE COUNTY RGNL (EGE)

39°39'N-106°55'W

RNAV (GPS) Y RWY 25

SW-1, 07 AUG 2025 to 04 SEP 2025

SW-1, 07 AUG 2025 to 04 SEP 2025