

EAGLE, COLORADO

AL-6403 (FAA-O)

25163

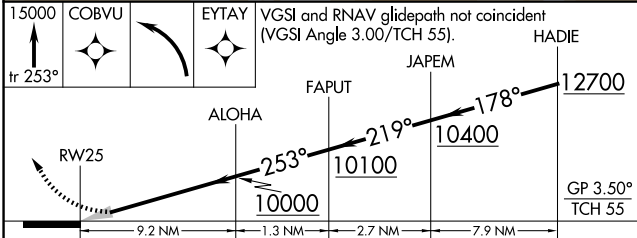
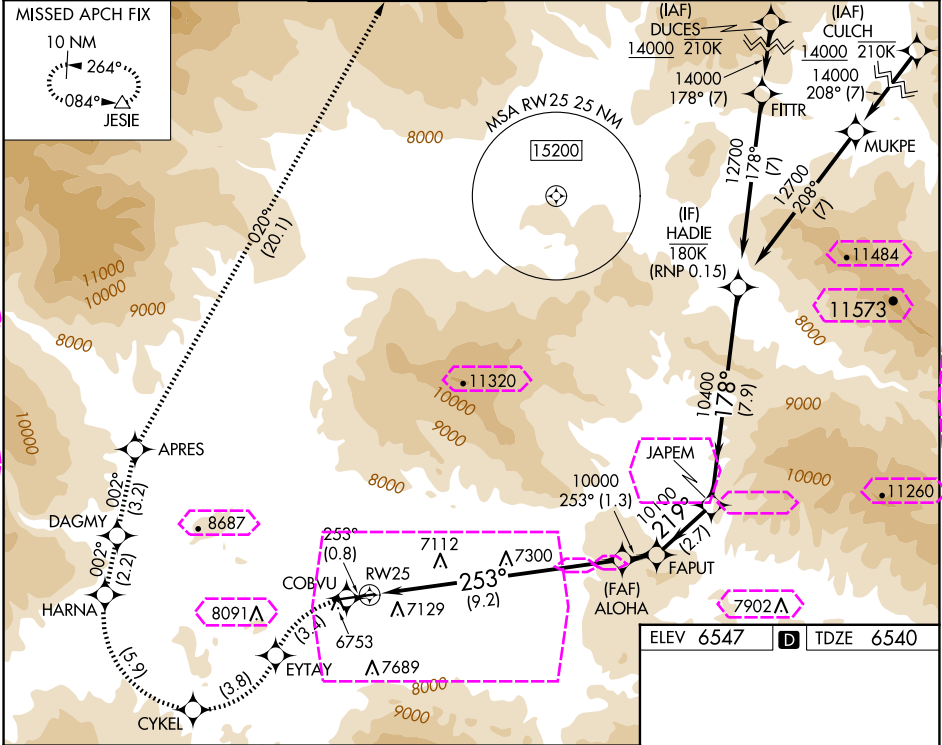
APP CRS	Rwy Ldg	8000
253°	TDZE	6540
	Apt Elev	6547

# RNAV (RNP) Z RWY 25

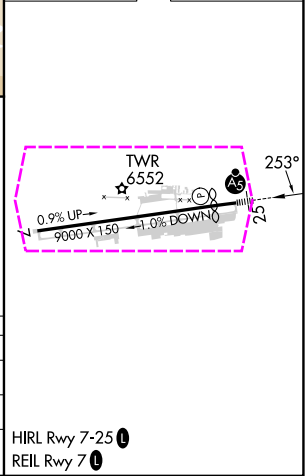
EAGLE COUNTY RGNL (EGE)

RNP AR APCH-GPS, RF, MIN RNP 0.11. Authorization required. Missed approach requires RNP <1.00.	MALSR	MISSED APPROACH: (Do not exceed 185K until HARNA) Climb to 15000 on the RNAV missed approach route to JESIE and hold. *Missed approach requires minimum climb of 281 feet per NM to 9000.
When local climeter setting not received, procedure NA. For uncompensated Baro-VNAV systems, procedure NA below -27°C or above 33°C. For inop ALS increase RNP 0.11* all visibilities to 7/5 SM.		

ATIS	DENVER CENTER	EAGLE TOWER *	GND CON	CLNC DEL	DENVER CLNC DEL
135.575	128.65 282.2	119.8 (CTAF) 0	121.8	124.75	124.75 (When tower closed)



ELEV 6547	TDZE 6540
-----------	-----------



CATEGORY	A	B	C	D
RNP 0.11 DA*	NA	6814-1/2	274 (300-1/2)	
RNP 0.11 DA	NA	7181-1 3/8	641 (700-1 3/8)	

AUTHORIZATION REQUIRED

HIRL Rwy 7-25  
REIL Rwy 7

EAGLE, COLORADO  
Orig-A 16MAY24

39°39'N-106°55'W

EAGLE COUNTY RGNL (EGE)  
RNAV (RNP) Z RWY 25

EAGLE, COLORADO

AL-6403 (FAA-O)

25219

APP CRS	Rwy Ldg	8000
253°	TDZE	6540
	Apt Elev	6547

# RNAV (RNP) Z RWY 25

EAGLE COUNTY RGNL (EGE)

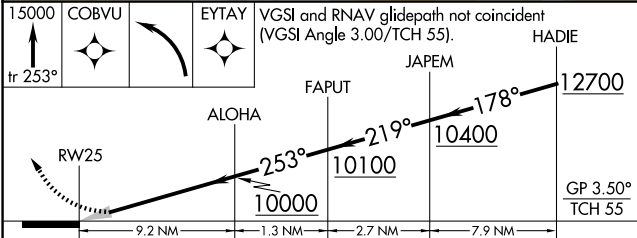
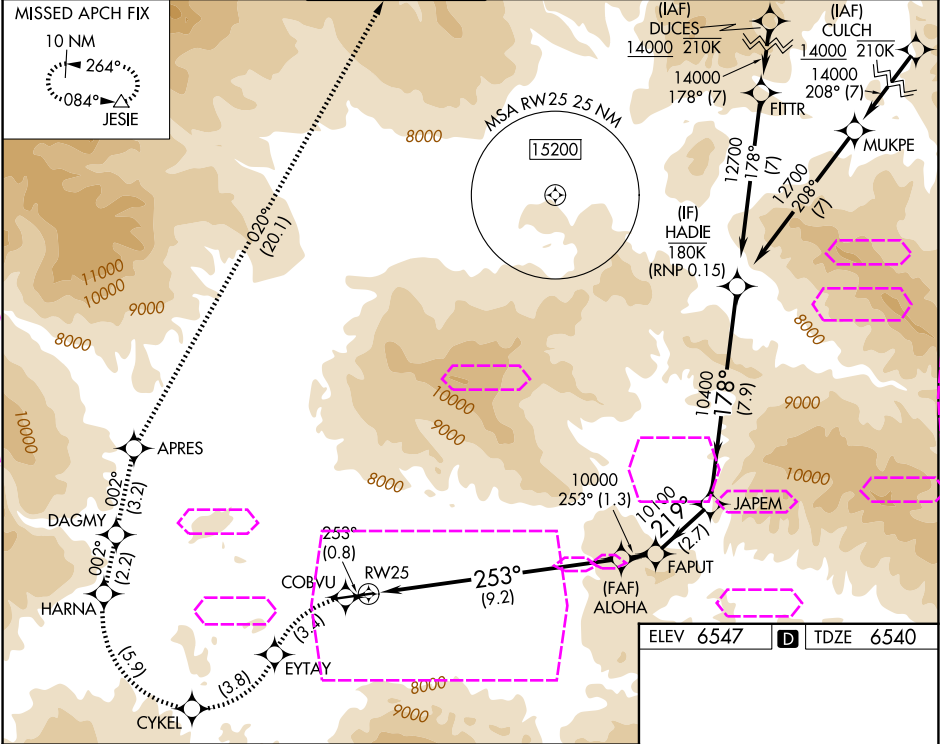
RNP AR APCH-GPS, RF, MIN RNP 0.11. Authorization required.  
Missed approach requires RNP <1.00.

When local climeter setting not received, procedure NA. For uncompensated Baro-VNAV systems, procedure NA below -27°C or above 33°C. For inop ALS increase RNP 0.11\* all visibilities to 7% SM.

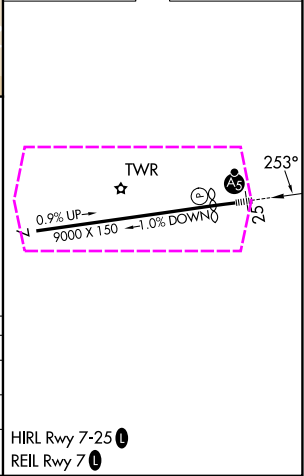
MALSR

MISSED APPROACH: (Do not exceed 185K until HARNA) Climb to 15000 on the RNAV missed approach route to JESIE and hold.  
\*Missed approach requires minimum climb of 281 feet per NM to 9000.

ATIS	DENVER CENTER	EAGLE TOWER *	GND CON	CLNC DEL	DENVER CLNC DEL
135.575	128.65 282.2	119.8 (CTAF) 0	121.8	124.75	124.75 (When tower closed)



ELEV 6547	TDZE 6540
-----------	-----------



CATEGORY	A	B	C	D
RNP 0.11 DA*	NA	6814-1/2	274 (300-1/2)	
RNP 0.11 DA	NA	7181-1 3/8	641 (700-1 3/8)	

AUTHORIZATION REQUIRED

HIRL Rwy 7-25  
REIL Rwy 7

EAGLE, COLORADO  
Orig-A 16MAY24

39°39'N-106°55'W

EAGLE COUNTY RGNL (EGE)  
RNAV (RNP) Z RWY 25