

EAGLE, COLORADO

AL-6403 (FAA-O)

25163

APP CRS	Rwy Ldg	8000
253°	TDZE	6540
	Apt Elev	6547

RNAV (RNP) X RWY 25

EAGLE COUNTY RGNL (EGE)

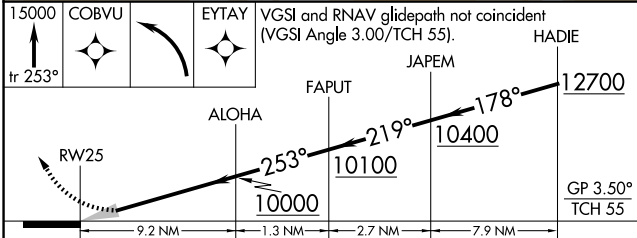
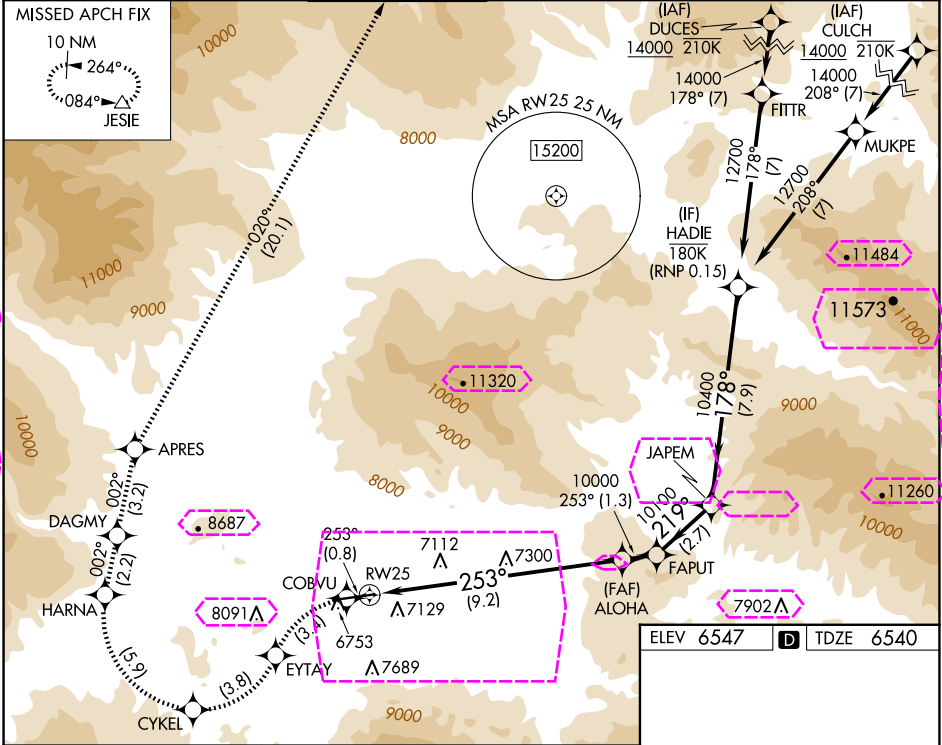
RNP AR APCH-GPS, RF, MIN RNP 0.13. Authorization required.
Missed approach requires RNP <1.00.

When local climeter setting not received, procedure NA. For uncompensated Baro-VNAV systems, procedure NA below -27°C or above 33°C. For inop ALS increase RNP 0.13 all visibilities to 1% SM.

MALSRL

MISSED APPROACH: (Do not exceed 185K until HARNA) Climb to 15000 on the RNAV missed approach route to JESIE and hold.
*Missed approach requires minimum climb of 269 feet per NM to 8700.

ATIS	DENVER CENTER	EAGLE TOWER *	GND CON	CLNC DEL	DENVER CLNC DEL
135.575	128.65 282.2	119.8 (CTAF) 0	121.8	124.75	124.75 (When tower closed)



EAGLE, COLORADO



AL-6403 (FAA-O)

25219

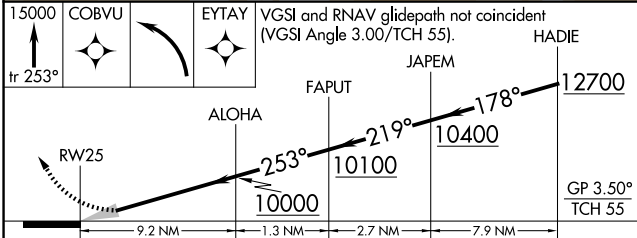
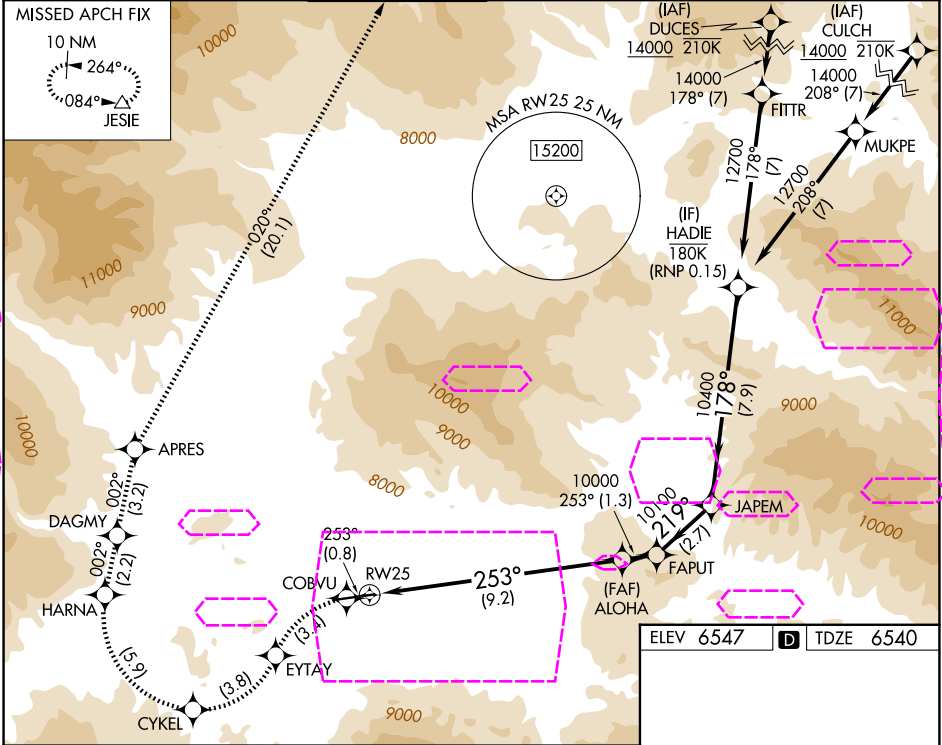
APP CRS	Rwy Ldg	8000
253°	TDZE	6540
	Apt Elev	6547

RNAV (RNP) X RWY 25

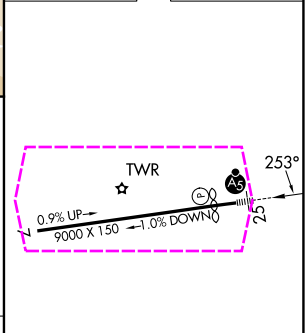
EAGLE COUNTY RGNL (EGE)

RNP AR APCH-GPS, RF, MIN RNP 0.13. Authorization required. Missed approach requires RNP <1.00.		MALSR 	MISSED APPROACH: (Do not exceed 185K until HARNA) Climb to 15000 on the RNAV missed approach route to JESIE and hold. *Missed approach requires minimum climb of 269 feet per NM to 8700.
 -19°C	When local climeter setting not received, procedure NA. For uncompensated Baro-VNAV systems, procedure NA below -27°C or above 33°C. For inop ALS increase RNP 0.13 all visibilities to 1% SM.		

ATIS 135.575	DENVER CENTER 128.65 282.2	EAGLE TOWER ★ 119.8 (CTAF) 0	GND CON 121.8	CLNC DEL 124.75	DENVER CLNC DEL 124.75 (When tower closed)
-----------------	-------------------------------	---------------------------------	------------------	--------------------	---



ELEV 6547	TDZE 6540
-----------	-----------



CATEGORY	A	B	C	D
RNP 0.13 DA*	NA	6937-5/8	397 (400-5/8)	
RNP 0.13 DA	NA	7204-1 1/2	664 (700-1 1/2)	

AUTHORIZATION REQUIRED

HIRL Rwy 7-25 0
REIL Rwy 7 0

EAGLE, COLORADO
Orig-A 16MAY24

39°39'N-106°55'W

RNAV (RNP) X RWY 25