

EAGLE, COLORADO

AL-6403 (FAA)

25163

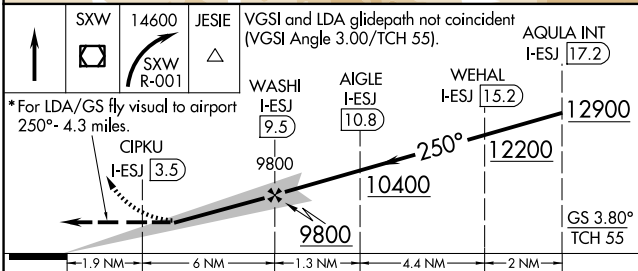
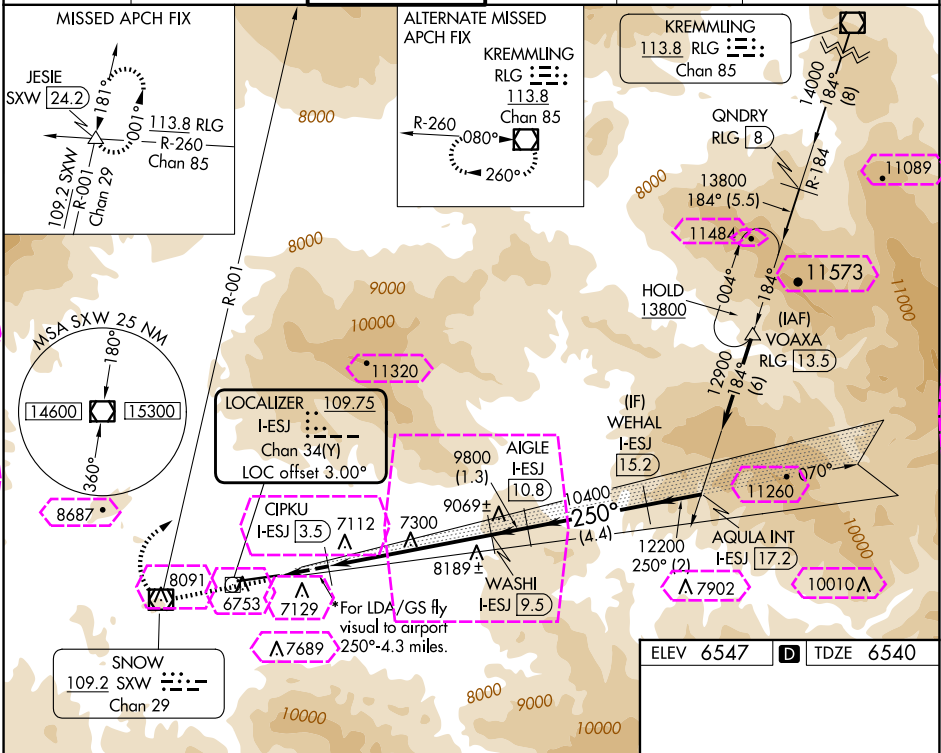
LOC/DME I-ESJ <b>109.75</b> Chan <b>34</b> (Y)	APP CRS <b>250°</b>	Rwy Ldg TDZE Apt Elev <b>8000</b> <b>6540</b> <b>6547</b>
--	------------------------	--

# LDA RWY 25

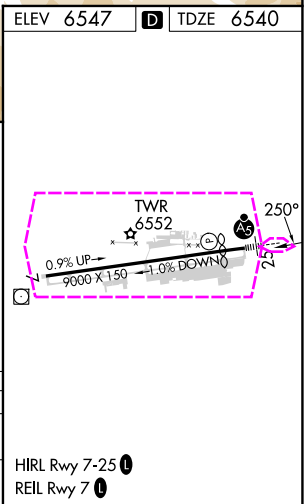
EAGLE COUNTY RGNL (EGE)

DME required. ▼ ▲ -19°C Inoperative table does not apply. At night increase LDA/GS visibility to 5 SM. *Fly visual to airport authorized during day only.	MALSR A5	MISSED APPROACH: Climb direct SXW VOR/DME, cross SXW VOR/DME, then climbing right turn to 14600 on SXW VOR/DME R-001 to JESIE SXW 24.2 DME and hold, continue climb-in-hold to 14600. *Missed approach requires minimum climb of 275 feet per NM to 11700.
---	-------------	--

ATIS <b>135.575</b>	DENVER CENTER <b>128.65 282.2</b>	EAGLE TOWER ★ <b>119.8</b> (CTAF) 0	GND CON <b>121.8</b>	CLNC DEL <b>124.75</b>	DENVER CLNC DEL <b>124.75</b> (When tower closed)
------------------------	--------------------------------------	--	-------------------------	---------------------------	---



CATEGORY	A	B	C	D
S-LDA/GS 25*	8330-3	1790 (1800-3)		NA
S-LDA 25	8620-2½	2080 (2100-2½)	8620-3 2080 (2100-3)	NA



EAGLE, COLORADO  
Amdt 1A 31JAN19

39°39'N-106°55'W

EAGLE COUNTY RGNL (EGE)

# LDA RWY 25

EAGLE, COLORADO

AL-6403 (FAA)

25219

LOC/DME I-ESJ <b>109.75</b> Chan <b>34</b> (Y)	APP CRS <b>250°</b>	Rwy Ldg TDZE Apt Elev <b>8000</b> <b>6540</b> <b>6547</b>
--	------------------------	--

# LDA RWY 25

EAGLE COUNTY RGNL (EGE)

DME required.

▼

▲

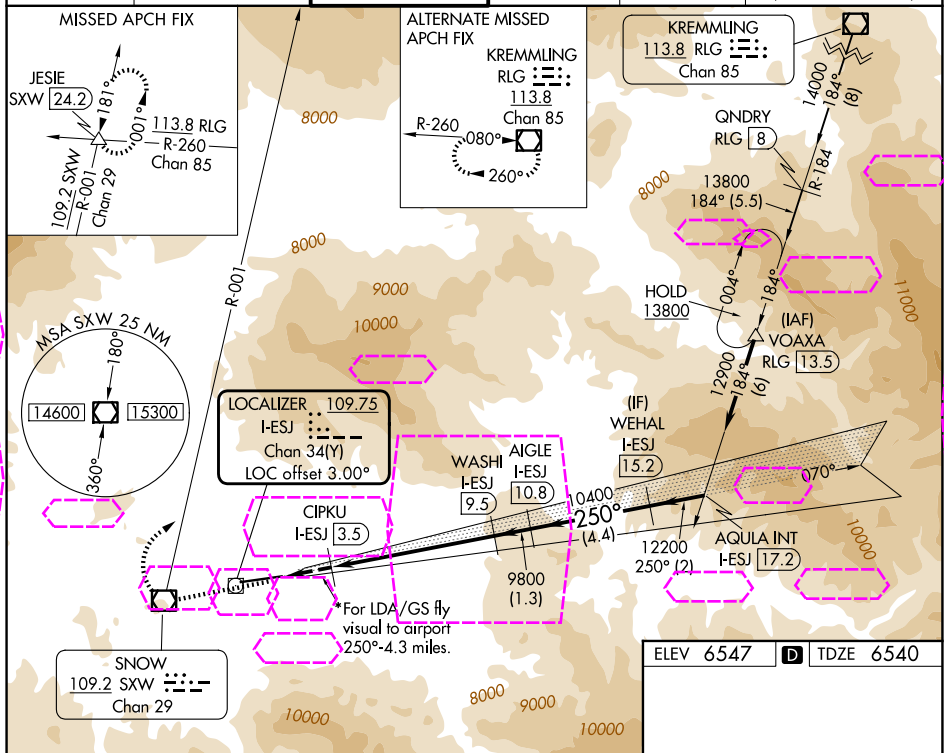
☒ -19°C





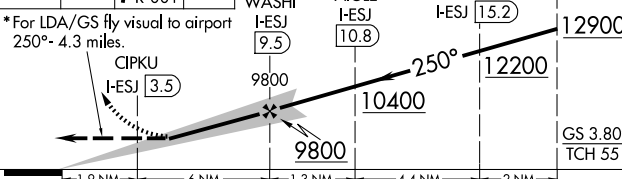
Inoperative table does not apply.  
At night increase LDA/GS visibility to 5 SM.  
\*Fly visual to airport authorized during day only.

MALSR

MISSED APPROACH: Climb direct SXW VOR/DME, cross SXW VOR/DME, then climbing right turn to 14600 on SXW VOR/DME R-001 to JESIE SXW 24.2 DME and hold, continue climb-in-hold to 14600. \*Missed approach requires minimum climb of 275 feet per NM to 11700.

ATIS <b>135.575</b>	DENVER CENTER <b>128.65 282.2</b>	EAGLE TOWER ★ <b>119.8</b> (CTAF) 0	GND CON <b>121.8</b>	CLNC DEL <b>124.75</b>	DENVER CLNC DEL <b>124.75</b> (When tower closed)
------------------------	--------------------------------------	--	-------------------------	---------------------------	---



	 SXW 14600  SXW R-001	 JESIE	VGSI and LDA glidepath not coincident (VGSI Angle 3.00/TCH 55).		AQUA INT I-ESJ 17.2
*For LDA/GS fly visual to airport 250°- 4.3 miles.					
					
CATEGORY	A	B	C	D	
S-LDA/GS 25*	8330-3 1790 (1800-3)				NA
S-LDA 25	8620-2½	2080 (2100-2½)	8620-3 2080 (2100-3)	NA	

ELEV 6547 D TDZE 6540

TWR

0.9% UP  
9000 X 150 → 0.0% DOWN

HIRL Rwy 7-25 0  
REIL Rwy 7 0

EAGLE, COLORADO  
Amdt 1A 31JAN19

39°39'N-106°55'W

EAGLE COUNTY RGNL (EGE)  
**LDA RWY 25**