

HENDERSON, TEXAS

AL-6358 (FAA)

21112

VORTAC GGG	APP CRS	Rwy Idg	N/A
112.9	190°	TDZE	N/A
Chan 76		Apt Elev	442

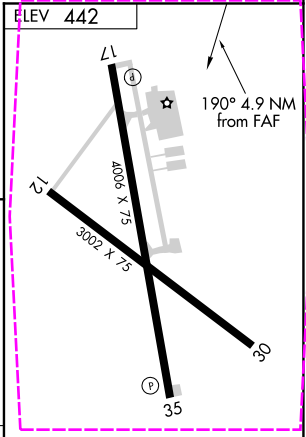
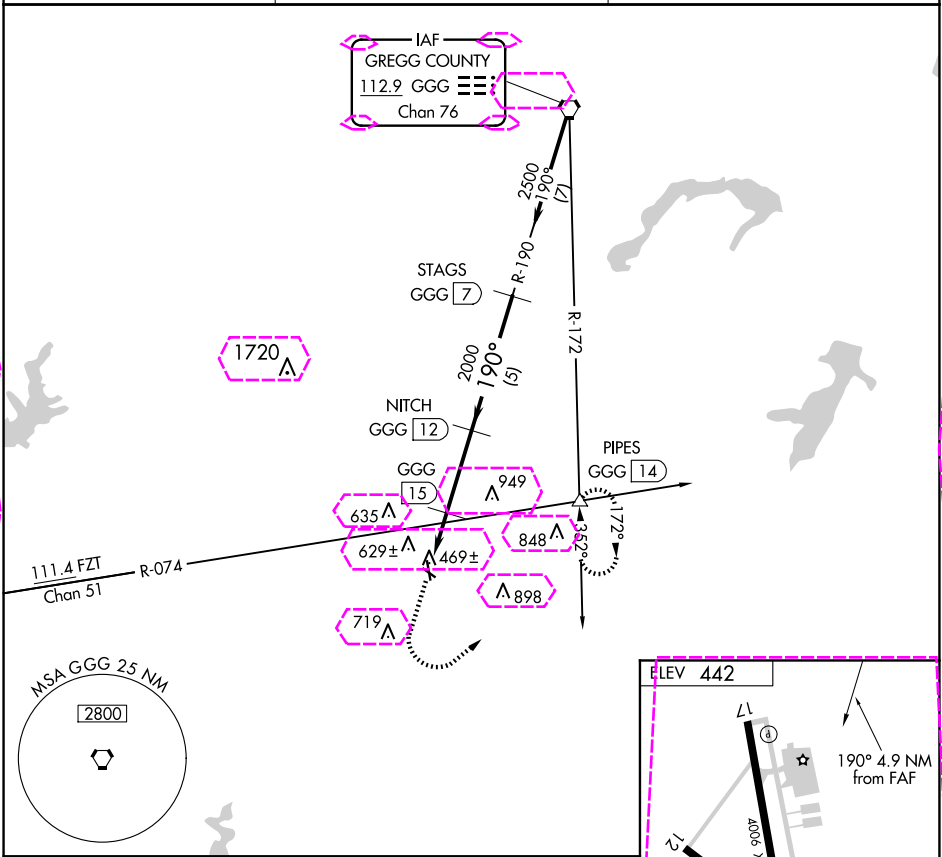
VOR/DME-A  
RUSK COUNTY (R.F.I)

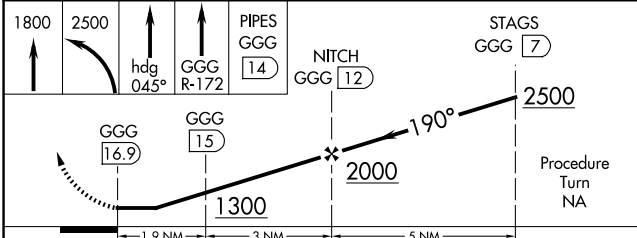
**NA**

When local altimeter setting not received, use Longview altimeter setting and increase all MDAs 60 feet and Circling Cat C visibility ¼ SM. Circling Rwy 12, 17 and 30 NA at night.

**MISSED APPROACH:** Climb to 1800 then climbing left turn to 2500 via heading 045° and GGG R-172 to PIPES INT/14 DME and hold.

AWOS-3 <b>119.375</b>	LONGVIEW APP CON ★ <b>124.275 257.975</b>	UNICOM <b>122.8</b> (CTAF)
--------------------------	--	-------------------------------



1800	2500	hdg 045°	GGG R-172	PIPES GGG 14	NITC GGG 12	STAGS GGG 7
						
CATEGORY						
CIRCLING						

HENDERSON, TEXAS  
Amdt 3C 22APR21

32°09'N-94°51'W

RUSK COUNTY (R.F.I)  
VOR/DME-A

SC-2, 10 JUL 2025 to 07 AUG 2025

SC-2, 10 JUL 2025 to 07 AUG 2025

HENDERSON, TEXAS

AL-6358 (FAA)

25219

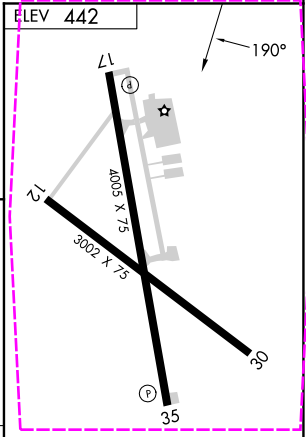
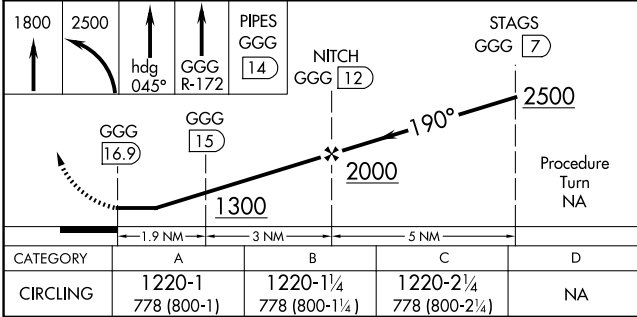
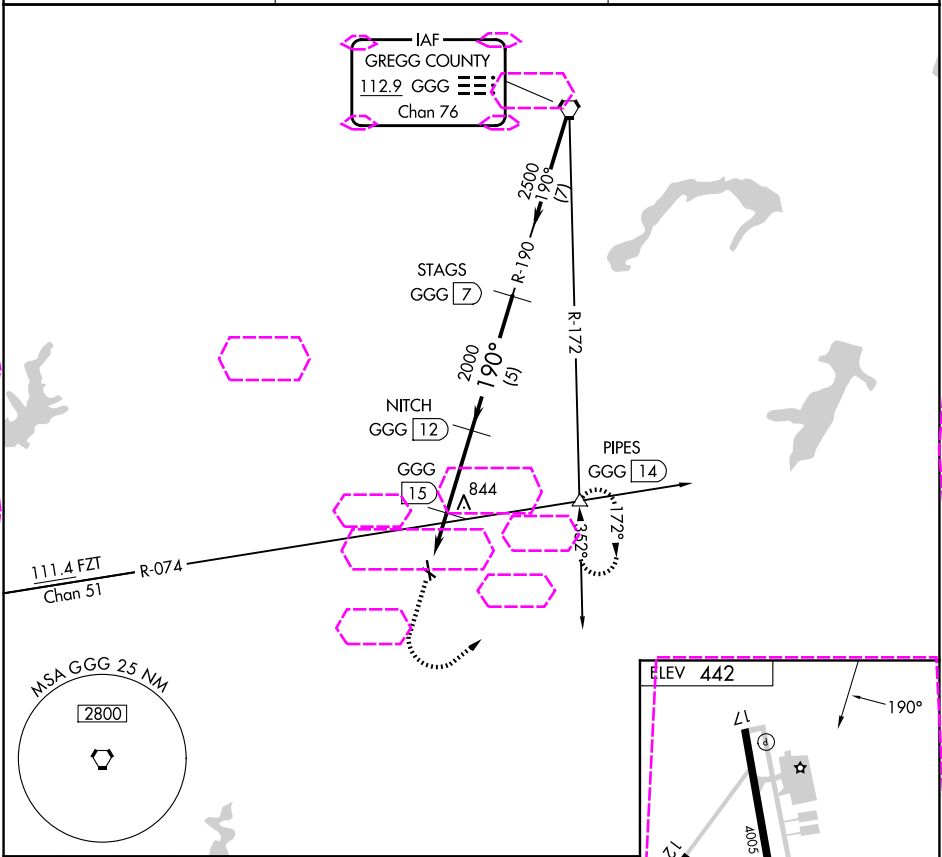
VORTAC GGG <b>112.9</b> Chan <b>76</b>	APP CRS <b>190°</b>	Rwy Ldg TDZE Apt Elev	N/A N/A <b>442</b>
--	------------------------	-----------------------------	--------------------------

VOR/DME-A  
RUSK COUNTY (R.F.I)

**NA** When local altimeter setting not received, use Longview altimeter setting and increase all MDAs 60 feet and Circling Cat C visibility ¼ SM. Circling Rwy 12, 17 and 30 NA at night.

MISSED APPROACH: Climb to 1800 then climbing left turn to 2500 via heading 045° and GGG R-172 to PIPES INT/14 DME and hold.

AWOS-3 <b>119.375</b>	LONGVIEW APP CON ★ <b>124.275 257.975</b>	UNICOM <b>122.8</b> (CTAF)
--------------------------	--	-------------------------------



HENDERSON, TEXAS  
Amdt 3C 22APR21

32°09'N-94°51'W

RUSK COUNTY (R.F.I)  
VOR/DME-A

SC-2, 07 AUG 2025 to 04 SEP 2025

SC-2, 07 AUG 2025 to 04 SEP 2025