

HENDERSON, TEXAS

AL-6358 (FAA)

25163

WAAS CH 86847 W35A	APP CRS 347°	Rwy Ldg 4006 TDZE 442 Apt Elev 442
--	------------------------	---

RNAV (GPS) RWY 35

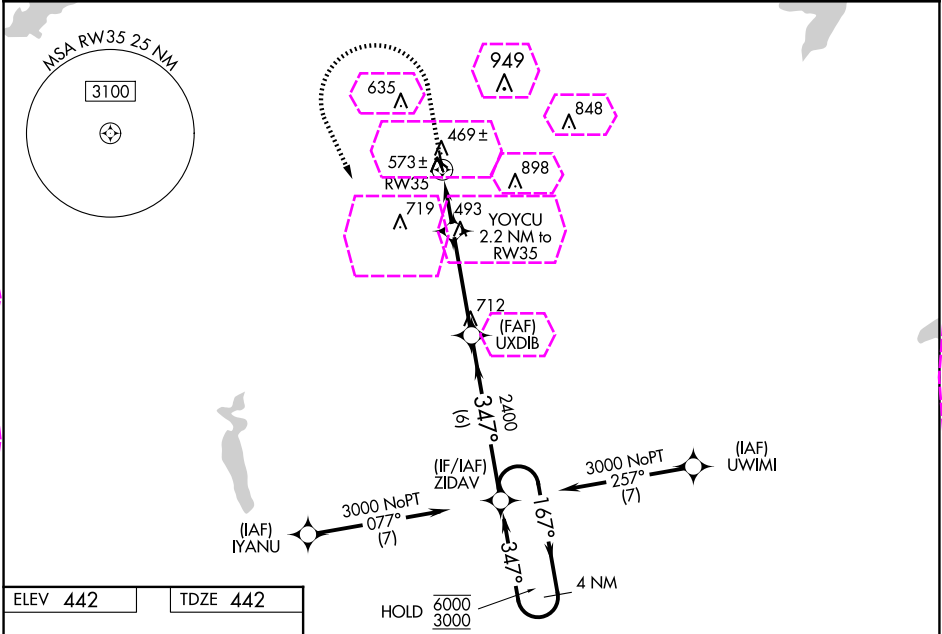
RUSK COUNTY (R.F.I)

RNP APCH - GPS

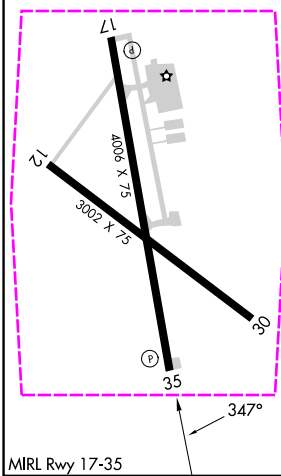
▼ Baro-VNAV and VDP NA when using GGG altimeter setting. For uncompensated Baro-VNAV systems, LNAV/VNAV NA below -15°C or above 54°C. Rwy 35 helicopter visibility reduction below ¾ SM NA. Circling Rwy 12, 17 and 30 NA at night. When local altimeter setting not received, use GGG altimeter setting and increase LPV DA to 740 feet; increase LNAV/VNAV DA to 904 feet and all visibilities ¼ SM. Increase all MDAs 60 feet and LNAV visibility Cat C ¼ SM, and Circling visibility Cat C ¼ SM.




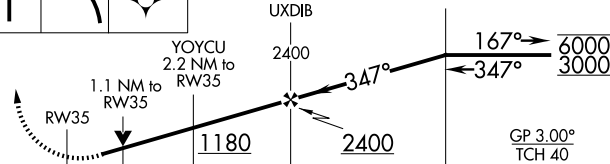
MISSED APPROACH: Climb to 900 then climbing left turn to 3000 direct ZIDAV and hold.

AWOS-3 119.375	LONGVIEW APP CON ★ 124.275 257.975	UNICOM 122.8 (CTAF)
--------------------------	--	-------------------------------



ELEV 442	TDZE 442
-----------------	-----------------



900	3000	ZIDAV	4 NM Holding Pattern		
					
					
CATEGORY		A	B	C	D
LPV	DA	692-1 250 (300-1)			NA
LNAV/VNAV	DA	856-1⅛ 414 (500-1⅛)			NA
LNAV	MDA	840-1 398 (400-1)	840-1⅛ 398 (400-1⅛)		NA
CIRCLING	920-1 478 (500-1)	960-1 518 (600-1)	1200-2¼ 758 (800-2¼)		NA

MIRL Rwy 17-35

HENDERSON, TEXAS

Orig 12JUN25

32°09'N-94°51'W

RUSK COUNTY (R.F.I)

RNAV (GPS) RWY 35

SC-2, 10 JUL 2025 to 07 AUG 2025

SC-2, 10 JUL 2025 to 07 AUG 2025

HENDERSON, TEXAS

AL-6358 (FAA)

25219

WAAS CH 86847 W35A	APP CRS 347°	Rwy Ldg 4005 TDZE 442 Apt Elev 442
--	------------------------	---

RNAV (GPS) RWY 35

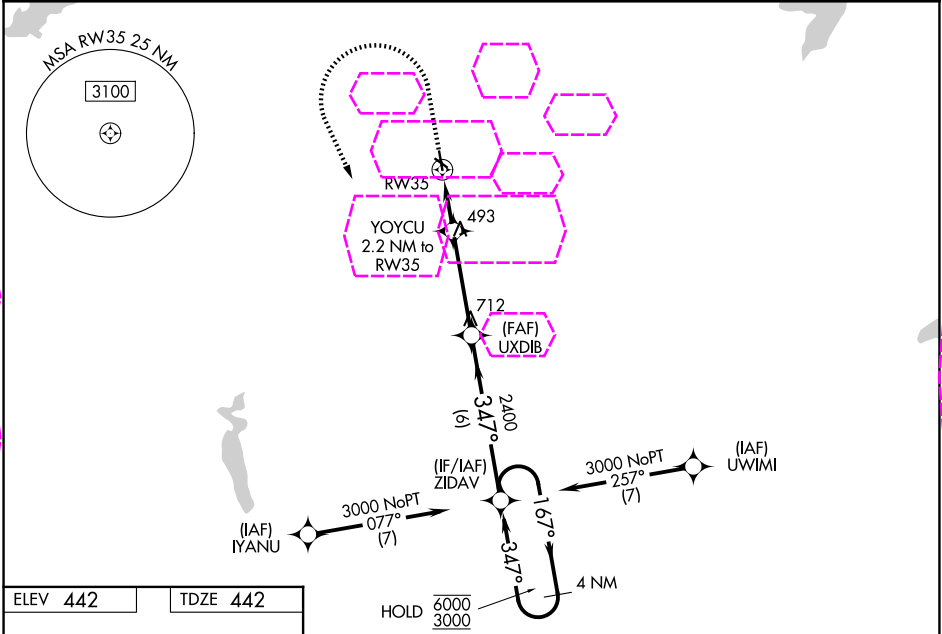
RUSK COUNTY (R.F.I)

RNP APCH - GPS

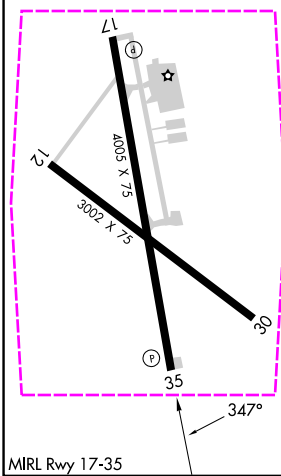
▼ Baro-VNAV and VDP NA when using GGG altimeter setting. For uncompensated Baro-VNAV systems, LNAV/VNAV NA below -15°C or above 54°C. Rwy 35 helicopter visibility reduction below ¾ SM NA. Circling Rwy 12, 17 and 30 NA at night. When local altimeter setting not received, use GGG altimeter setting and increase LPV DA to 740 feet; increase LNAV/VNAV DA to 904 feet and all visibilities ¼ SM. Increase all MDAs 60 feet and LNAV visibility Cat C ¼ SM, and Circling visibility Cat C ¼ SM.

MISSED APPROACH: Climb to 900 then climbing left turn to 3000 direct ZIDAV and hold.

AWOS-3 119.375	LONGVIEW APP CON ★ 124.275 257.975	UNICOM 122.8 (CTAF)
--------------------------	--	-------------------------------



ELEV 442	TDZE 442
-----------------	-----------------



900 3000 ZIDAV				4 NM Holding Pattern	
				GP 3.00° TCH 40	
CATEGORY	A	B	C	D	
LPV DA	692-1		250 (300-1)		NA
LNAV/VNAV DA	856-1⅛		414 (500-1⅛)		NA
LNAV MDA	840-1		398 (400-1)		840-1⅛ 398 (400-1⅛)
CIRCLING	920-1 478 (500-1)		960-1 518 (600-1)		1200-2¼ 758 (800-2¼)

MIRL Rwy 17-35
HENDERSON, TEXAS
Orig 12JUN25

32°09'N-94°51'W

RNAV (GPS) RWY 35

SC-2, 07 AUG 2025 to 04 SEP 2025

SC-2, 07 AUG 2025 to 04 SEP 2025