

HENDERSON, TEXAS

AL-6358 (FAA)

21112

APP CRS	Rwy Idg	4006
167°	TDZE	442
	Apt Elev	442

RNAV (GPS) RWY 17

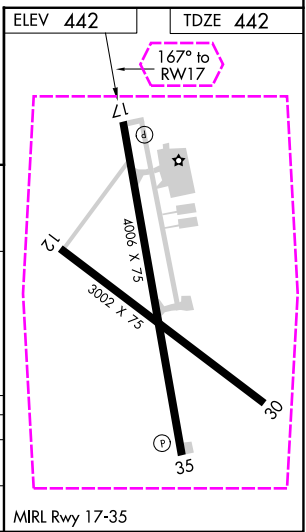
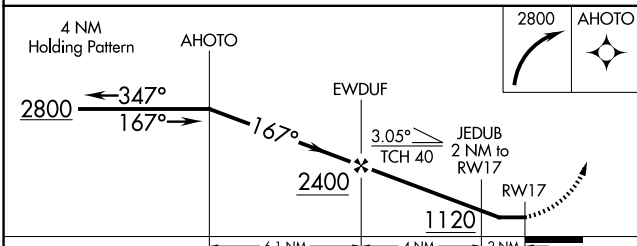
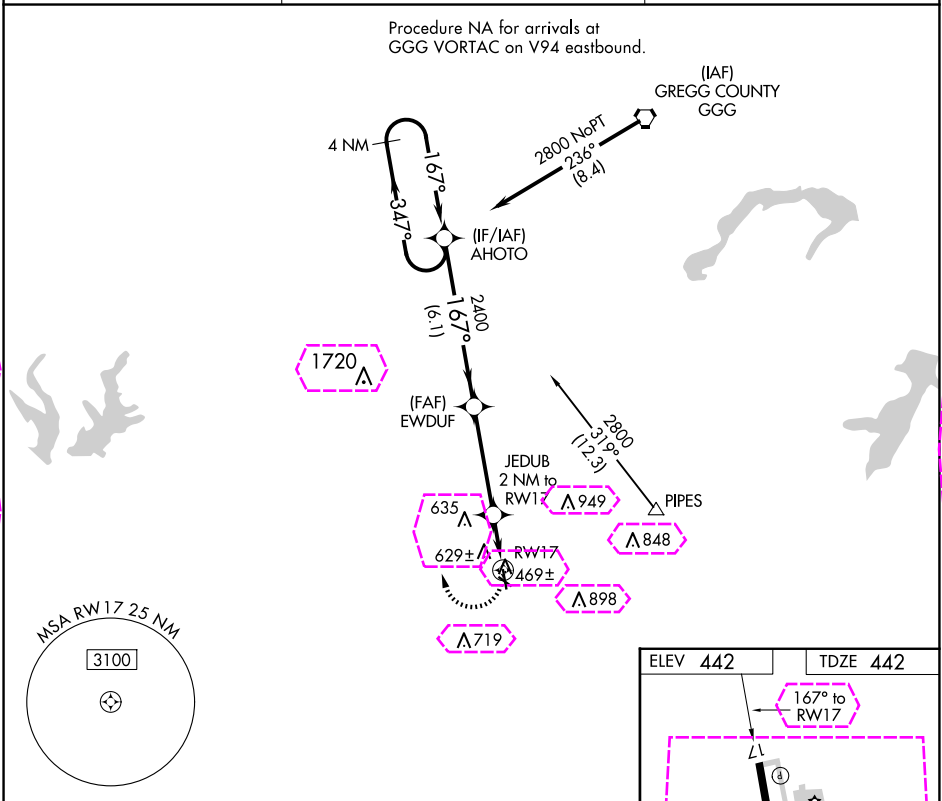
RUSK COUNTY (R.F.I)

RNP APCH

▼ Rwy 17 helicopter visibility reduction below 1 SM NA. When local alimeter setting not received, use Longview alimeter setting and increase all MDA 60 feet.
▲ Rwy 17 Straight-in minimums NA at night. Circling Rwy 12, 17 and 30 NA at night.

MISSED APPROACH: Climbing right turn to 2800 direct AHOTO and hold.

AWOS-3 119.375	LONGVIEW APP CON ★ 124.275 257.975	UNICOM 122.8 (CTAF)
-------------------	---------------------------------------	------------------------



CATEGORY	A	B	C	D
LNVA MDA	980-1	538 (600-1)	980-1½ 538 (600-1½)	NA
CIRCLING	980-1	538 (600-1)	1200-2½ 758 (800-2½)	NA

HENDERSON, TEXAS

Amdt 1A 22APR21

32°09'N-94°51'W

RNAV (GPS) RWY 17

RUSK COUNTY (R.F.I)

SC-2, 10 JUL 2025 to 07 AUG 2025

SC-2, 10 JUL 2025 to 07 AUG 2025

HENDERSON, TEXAS

AL-6358 (FAA)

25219

APP CRS	Rwy Ldg	4005
167°	TDZE	442
	Apt Elev	442

RNAV (GPS) RWY 17

RUSK COUNTY (R.F.I)

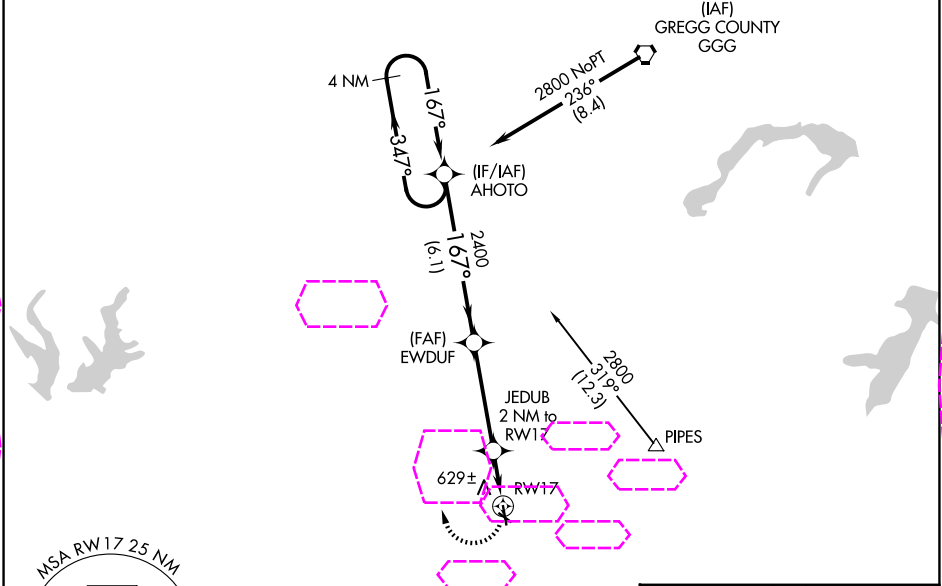
RNP APCH

▼ Rwy 17 helicopter visibility reduction below 1 SM NA. When local alimeter setting not received, use Longview alimeter setting and increase all MDA 60 feet.
▲ Rwy 17 Straight-in minimums NA at night. Circling Rwy 12, 17 and 30 NA at night.

MISSED APPROACH: Climbing right turn to 2800 direct AHOTO and hold.

AWOS-3 119.375	LONGVIEW APP CON ★ 124.275 257.975	UNICOM 122.8 (CTAF)
-------------------	---------------------------------------	------------------------

Procedure NA for arrivals at GGG VORTAC on V94 eastbound.



4 NM Holding Pattern

2800

347°

167°

AHOTO

167°

EWDUF

3.05° TCH 40

2400

JEDUB 2 NM to RWY 17

1120

RWY 17

6.1 NM

4 NM

2 NM

CATEGORY	A	B	C	D
LNVA MDA	980-1	538 (600-1)	980-1½ 538 (600-1½)	NA
CIRCLING	980-1	538 (600-1)	1200-2½ 758 (800-2½)	NA

ELEV 442

TDZE 442

167°

L1

12

30

35

4005 X 75

3002 X 75

MIRL Rwy 17-35

SC-2, 07 AUG 2025 to 04 SEP 2025

SC-2, 07 AUG 2025 to 04 SEP 2025