

PEORIA, ILLINOIS

AL-6351 (FAA)

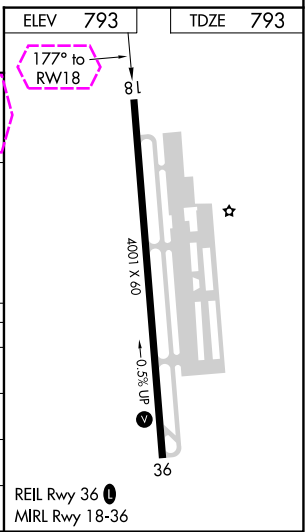
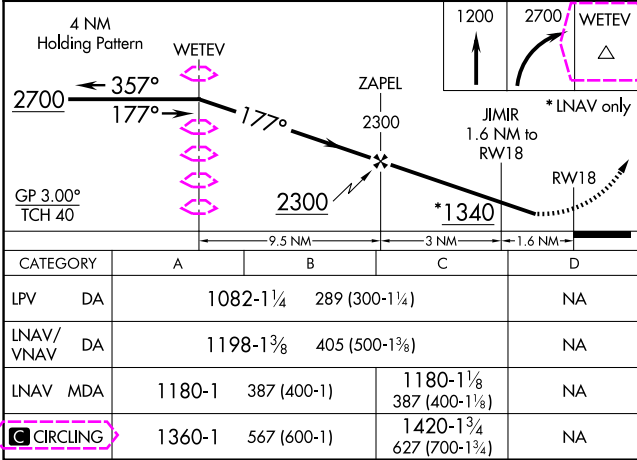
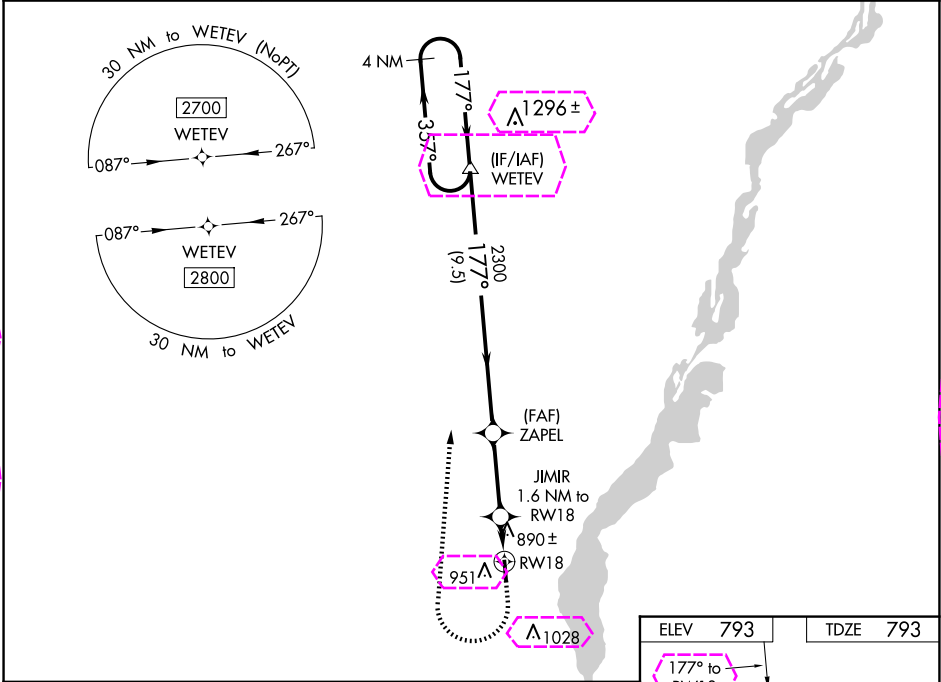
22251

WAAS CH 69434 W18A	APP CRS 177°	Rwy Idg TDZE Apt Elev	4001 793 793
--	------------------------	-----------------------------	---

RNAV (GPS) RWY 18
MOUNT HAWLEY AUXILIARY (3MY)

NA	Circling to Rwy 36 NA at night. DME/DME RNP-0.3 NA. Baro-VNAV NA. Use General Downing-Peoria Intl altimeter setting, when not received, use Lacon altimeter setting: increase LPV DA to 1112 feet and all visibilities ½ mile, increase LNAV/VNAV DA to 1228 feet and all visibilities ½ mile; increase all MDAs 40 feet and visibility Cat C ½ SM. Rwy 18 helicopter visibility reduction below 1 SM NA.	MISSED APPROACH: Climb to 1200 then climbing right turn to 2700 direct WETEVE and hold.
-----------	---	--

PIA ASOS 126.1 282.2	SAINT LOUIS APP CON 125.8 269.2	CLINC DEL 121.6	UNICOM 122.7 (CTAF) 0
--------------------------------	---	---------------------------	---------------------------------



PEORIA, ILLINOIS

AL-6351 (FAA)

25219

WAAS CH 69434 W18A	APP CRS 177°	Rwy Ldg TDZE Apt Elev	4001 793 793
--	------------------------	-----------------------------	---

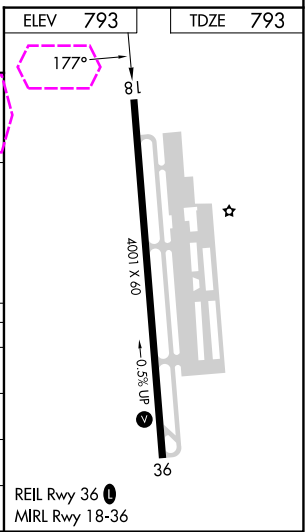
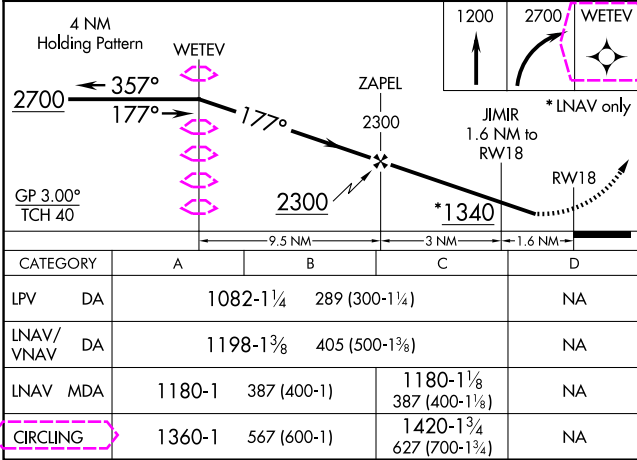
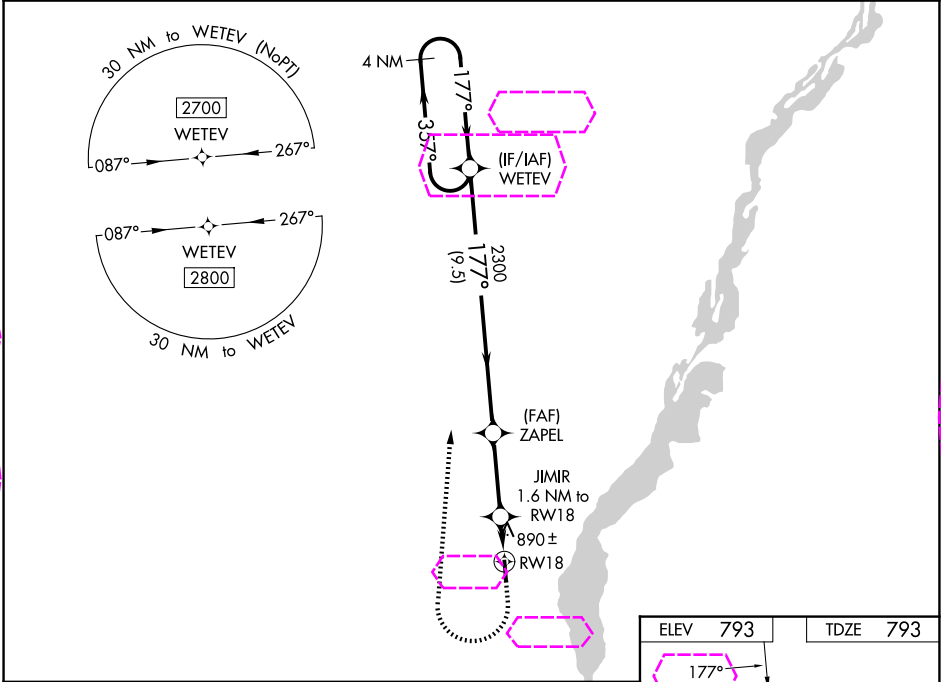
RNAV (GPS) RWY 18

MOUNT HAWLEY AUXILIARY (3MY)

NA Circling to Rwy 36 NA at night. DME/DME RNP-0.3 NA. Baro-VNAV NA.
Use General Downing-Peoria Intl altimeter setting, when not received, use Lacon
altimeter setting: increase LPV DA to 1112 feet and all visibilities ½ mile, increase
LNAV/VNAV DA to 1228 feet and all visibilities ½ mile; increase all MDAs 40 feet
and visibility Cat C ½ SM. Rwy 18 helicopter visibility reduction below 1 SM NA.

MISSED APPROACH:
Climb to 1200 then
climbing right turn to
2700 direct WETEVE
and hold.

PIA ASOS 126.1 282.2	SAINT LOUIS APP CON 125.8 269.2	CLINC DEL 121.6	UNICOM 122.7 (CTAF) 0
--------------------------------	---	---------------------------	---------------------------------



PEORIA, ILLINOIS
Amdt 2 17AUG17

40°48'N-89°37'W

MOUNT HAWLEY AUXILIARY (3MY)
RNAV (GPS) RWY 18