

TERRELL, TEXAS

AL-6340 (FAA)

24137

| | | |
|--|------------------------|---|
| WAAS CH 81999 W36A | APP CRS 356° | Rwy Idg 5006 TDZE 472 Apt Elev 474 |
|--|------------------------|---|

RNAV (GPS) RWY 36

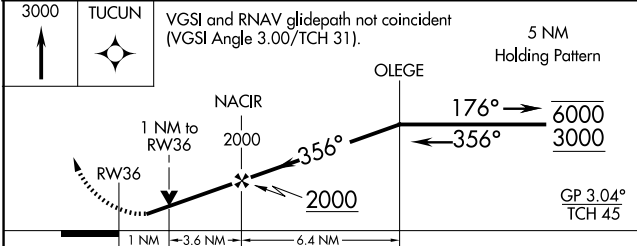
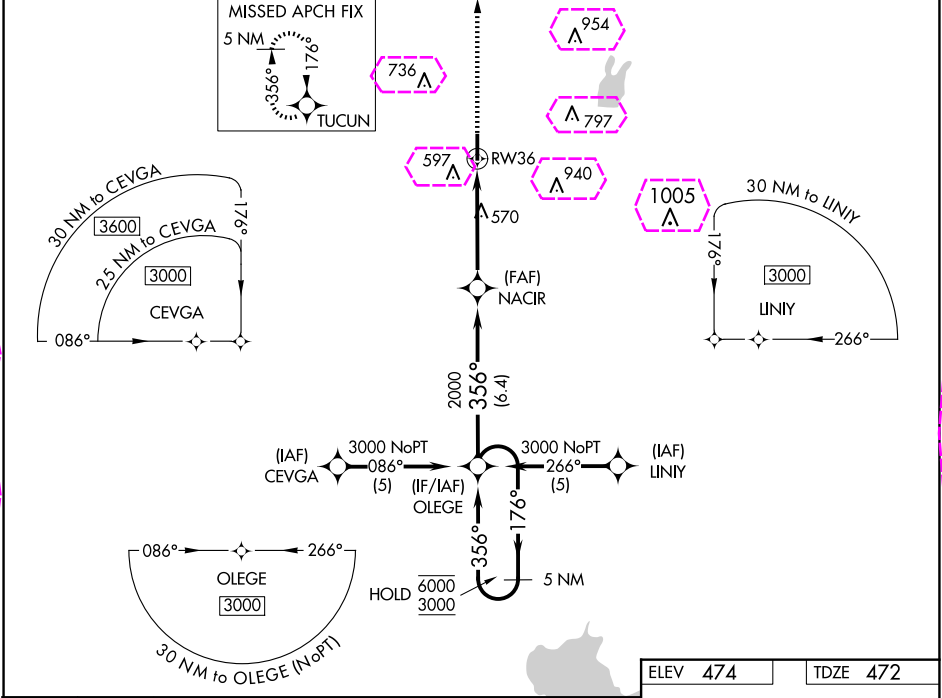
TERRELL MUNI (TRL)

RNP APCH - GPS.

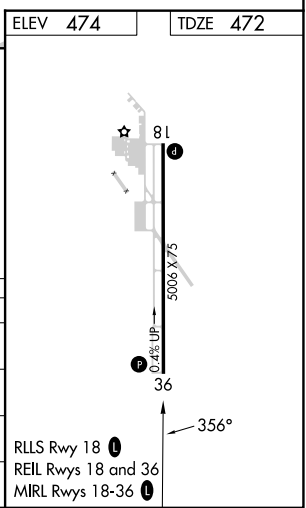
▼ Rwy 36 helicopter visibility reduction below $\frac{3}{4}$ SM NA.
▲ For uncompensated Baro-VNAV systems, LNAV/VNAV NA below -7°C or above 54°C.

MISSED APPROACH: Climb to 3000 direct TUCUN and hold.

| | | |
|------------------------|--|-----------------------------------|
| ASOS 119.275 | FORT WORTH CENTER 132.025 360.75 | UNICOM 123.075 (CTAF) 0 |
|------------------------|--|-----------------------------------|



| CATEGORY | A | B | C | D |
|-----------------|----------------------|---------------------------|--|----|
| LPV DA | 730- $\frac{3}{4}$ | 258 (300- $\frac{3}{4}$) | | NA |
| LNAV/VNAV DA | 801-1 | 329 (400-1) | | NA |
| LNAV MDA | 820-1 | 348 (400-1) | | NA |
| CIRCLING | 980-1 506 (600-1) | 1020-1 546 (600-1) | 1100-1 $\frac{3}{4}$ 626 (700-1 $\frac{3}{4}$) | NA |



TERRELL, TEXAS
Orig-C 24MAR22

32°43'N-96°16'W

TERRELL MUNI (TRL)
RNAV (GPS) RWY 36

SC-2, 10 JUL 2025 to 07 AUG 2025

SC-2, 10 JUL 2025 to 07 AUG 2025

