

TERRELL, TEXAS

AL-6340 (FAA)

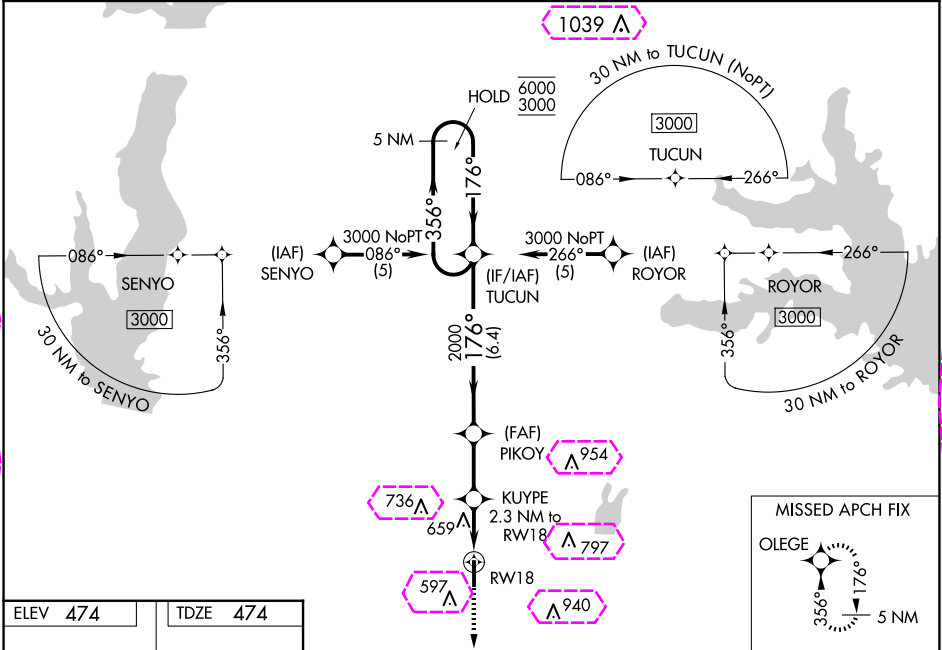
24137

WAAS CH 77699 W18A	APP CRS 176°	Rwy Idg 5006 TDZE 474 Apt Elev 474
--	------------------------	---

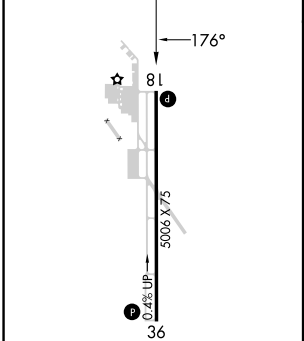
RNAV (GPS) RWY 18
TERRELL MUNI (TRL)

RNP APCH - GPS.	
<p>▼ Rwy 18 helicopter visibility reduction below $\frac{3}{4}$ SM NA. ▲ For uncompensated Baro-VNAV systems, LNAV/VNAV NA below -7°C or above 54°C.</p>	MISSED APPROACH: Climb to 3000 direct OLEGE and hold.

ASOS 119.275	FORT WORTH CENTER 132.025 360.75	UNICOM 123.075 (CTAF) 0
------------------------	--	-----------------------------------



ELEV 474	TDZE 474
-----------------	-----------------



RLS Rwy 18 0
REIL Rws 18 and 36
MIRL Rws 18-36 0

5 NM Holding Pattern				VGSI and RNAV glidepath not coincident (VGSI Angle 3.00/TCH 32).		3000	OLEGE
TUCUN				PIKOY		2000	
6000 ← 356°				KUYPE 2.3 NM to RW18		1240	
3000 → 176°				1.4 NM to RW18			
GP 3.04° TCH 45				RW18			
				6.4 NM → 2.3 NM → 0.8 NM → 1.4 NM			
CATEGORY	A	B	C	D			
LPV DA	756-7/8 282 (300-7/8)			NA			
LNAV/VNAV DA	1013-1 1/2 539 (600-1 1/2)			NA			
LNAV MDA	960-1	486 (500-1)	960-1 3/8 486 (500-1 3/8)	NA			
CIRCLING	1000-1 526 (600-1)	1020-1 546 (600-1)	1100-1 3/4 626 (700-1 3/4)	NA			

TERRELL, TEXAS
Orig-C 24MAR22

32°43'N-96°16'W

TERRELL MUNI (TRL)
RNAV (GPS) RWY 18

TERRELL, TEXAS

AL-6340 (FAA)

25219

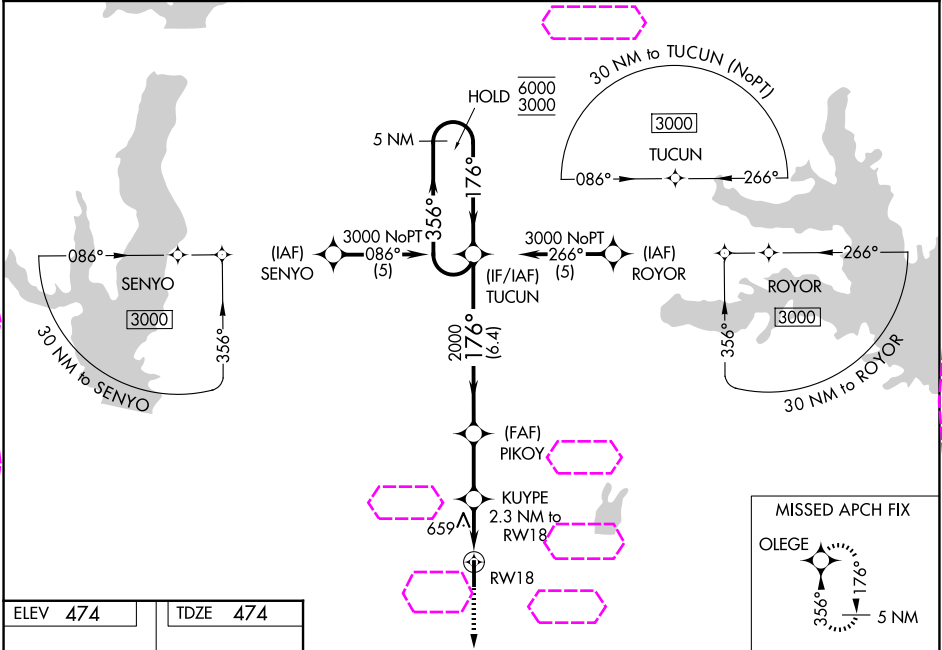
WAAS CH 77699 W18A	APP CRS 176°	Rwy Ldg 5006 TDZE 474 Apt Elev 474
--	------------------------	---

RNAV (GPS) RWY 18

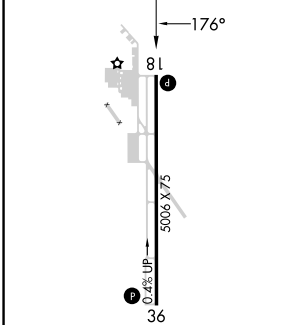
TERRELL MUNI (TRL)

RNP APCH - GPS.	
<p>▼ Rwy 18 helicopter visibility reduction below ¾ SM NA. ▲ For uncompensated Baro-VNAV systems, LNAV/VNAV NA below -7°C or above 54°C.</p>	MISSED APPROACH: Climb to 3000 direct OLEGE and hold.

ASOS 119.275	FORT WORTH CENTER 132.025 317.75	UNICOM 123.075 (CTAF) 0
------------------------	--	-----------------------------------



ELEV 474	TDZE 474
-----------------	-----------------



5 NM Holding Pattern				VGSi and RNAV glidepath not coincident (VGSi Angle 3.00/TCH 32).		3000	OLEGE
TUCUN				PIKOY	KUYPE	RWY 18	
6000 ← 356°				2000	2.3 NM to RWY 18	1.4 NM to RWY 18	
3000 → 176°				2000	1240	RWY 18	
GP 3.04° TCH 45				6.4 NM	2.3 NM	0.8 NM	1.4 NM
CATEGORY	A	B	C	D			
LPV DA	756-7/8			282 (300-7/8)	NA		
LNAV/VNAV DA	1013-1½			539 (600-1½)	NA		
LNAV MDA	960-1		486 (500-1)		960-1½		486 (500-1½)
CIRCLING	1000-1		1020-1		1100-1¾		626 (700-1¾)
	526 (600-1)		546 (600-1)		NA		

RLS Rwy 18 0
REIL Rws 18 and 36
MIRL Rws 18-36 0

TERRELL, TEXAS
Orig-C 24MAR22

32°43'N-96°16'W

RNAV (GPS) RWY 18

SC-2, 07 AUG 2025 to 04 SEP 2025

SC-2, 07 AUG 2025 to 04 SEP 2025