

REIDSVILLE, NORTH CAROLINA

AL-6329 (FAA)

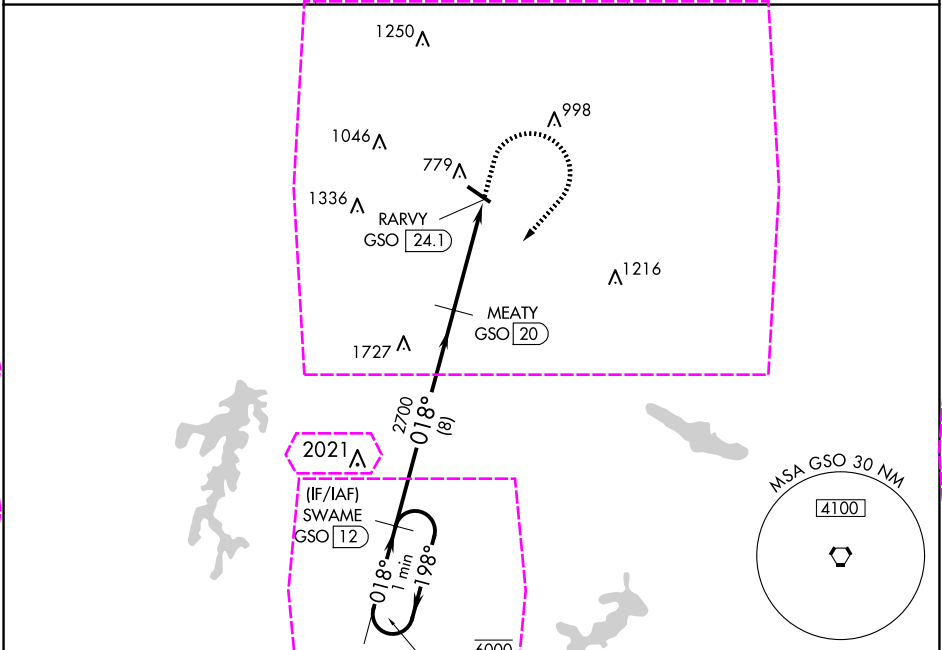
24249

VORTAC GSO	APP CRS	Rwy Idg	N/A
116.2	018°	TDZE	N/A
Chan 109		Apt Elev	694

VOR-A
ROCKINGHAM COUNTY NC SHILOH (SIF')

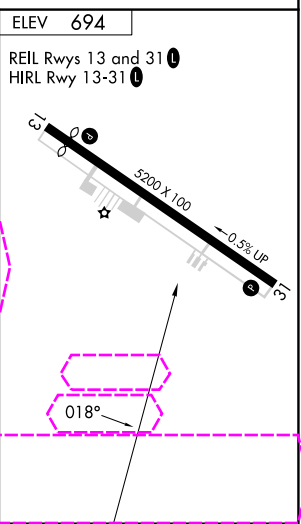
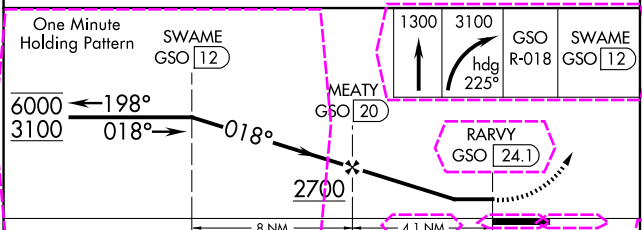
DME required.	MISSED APPROACH: Climb to 1300 then climbing right turn to 3100 on heading 225° and GSO VORTAC R-018 to SWAME/GSO 12 DME and hold.
---------------	--

AWOS-3 119.775	GREENSBORO APP CON 124.35 269.225	UNICOM 122.8 (CTAF)
-------------------	--------------------------------------	------------------------



Procedure NA for arrival on GSO VORTAC airway radials 337 CW 054

IAF
GREENSBORO
116.2 GSO
Chan 109



CATEGORY	A	B	C	D
CIRCLING	1280-1 586 (600-1)	1340-1 646 (700-1)	1340-1¼ 646 (700-1¼)	1440-2½ 746 (800-2½)

REIDSVILLE, NORTH CAROLINA

ROCKINGHAM COUNTY NC SHILOH (SIF')

Amdt 10 05SEP24

36°26'N-79°51'W

VOR-A

SE-2, 10 JUL 2025 to 07 AUG 2025

SE-2, 10 JUL 2025 to 07 AUG 2025

REIDSVILLE, NORTH CAROLINA

AL-6329 (FAA)

25219

VORTAC GSO	APP CRS	Rwy Ldg	N/A
116.2	018°	TDZE	N/A
Chan 109		Apt Elev	694

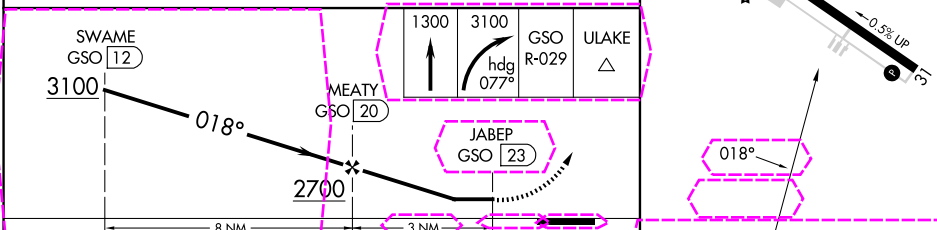
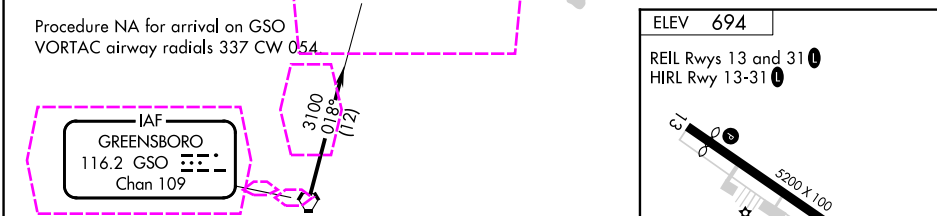
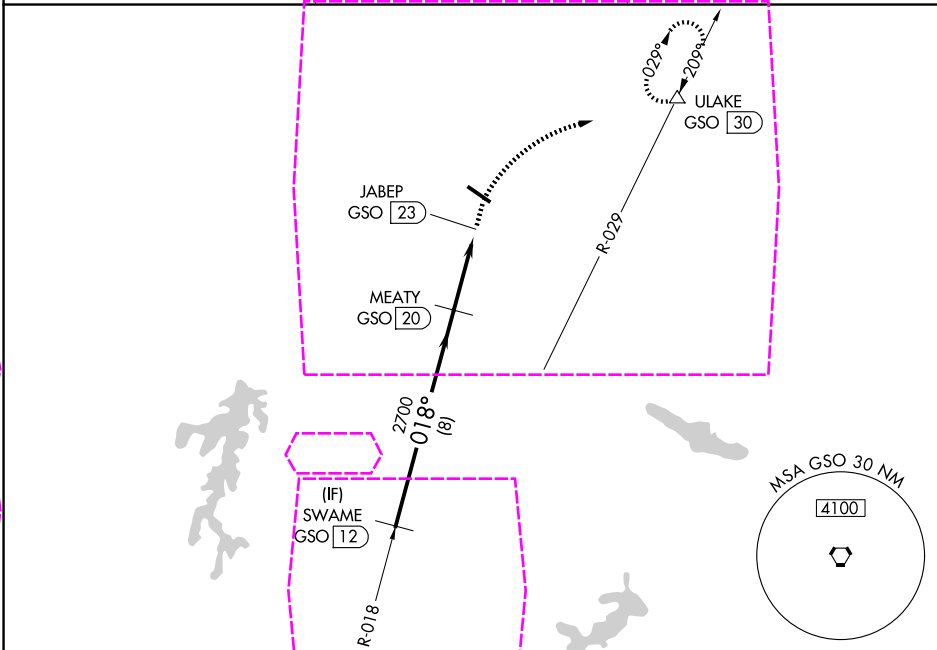
VOR-A

ROCKINGHAM COUNTY NC SHILOH (SIF')

DME required.

MISSED APPROACH: Climb to 3100 then climbing right turn to 3100 on heading 077° and GSO VORTAC R-029 to ULAKE/GSO 30 DME and hold, continue climb-in-hold to 3100.

AWOS-3 119.775	GREENSBORO APP CON 124.35 269.225	UNICOM 122.8 (CTAF)
-------------------	--------------------------------------	------------------------



CATEGORY	A	B	C	D	FAF to MAP 3 NM					
CIRCLING	1280-1½ 586 (600-1½)	1340-1½ 646 (700-1½)	1340-1¾ 646 (700-1¾)	1440-2½ 746 (800-2½)	Knots	60	90	120	150	180
					Min:Sec	3:00	2:00	1:30	1:12	1:00

REIDSVILLE, NORTH CAROLINA

ROCKINGHAM COUNTY NC SHILOH (SIF')

Amdt 11 07AUG25

36°26'N-79°51'W

VOR-A

SE-2, 07 AUG 2025 to 04 SEP 2025

SE-2, 07 AUG 2025 to 04 SEP 2025