

REIDSVILLE, NORTH CAROLINA

AL-6329 (FAA)

24305

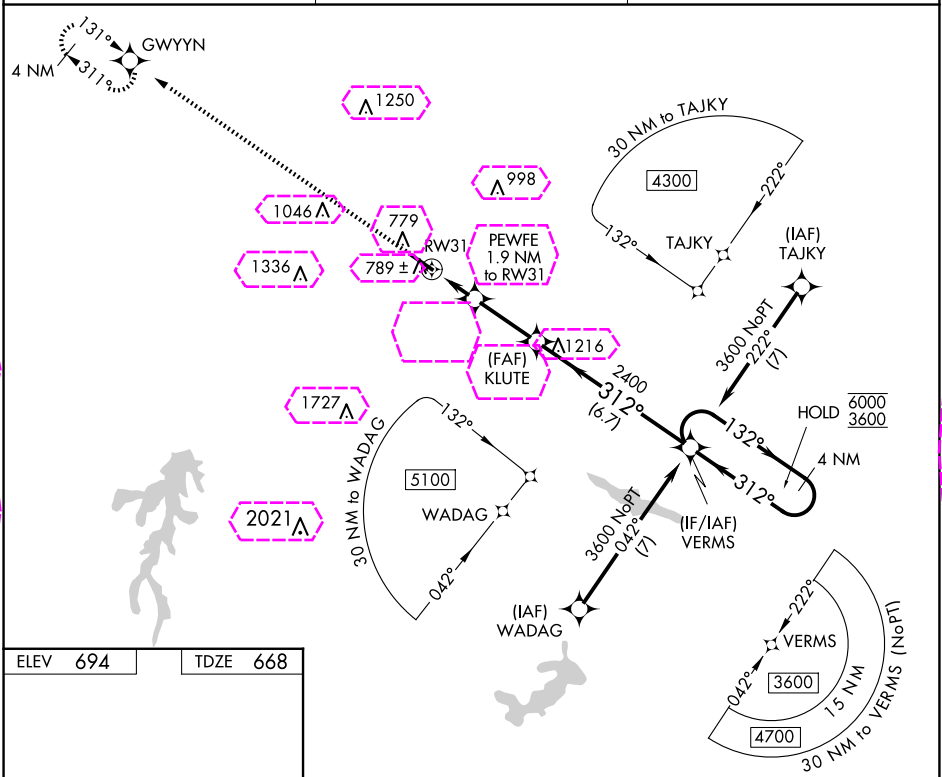
APP CRS	Rwy Idg	5200
312°	TDZE	668
	Apt Elev	694

# RNAV (GPS) RWY 31

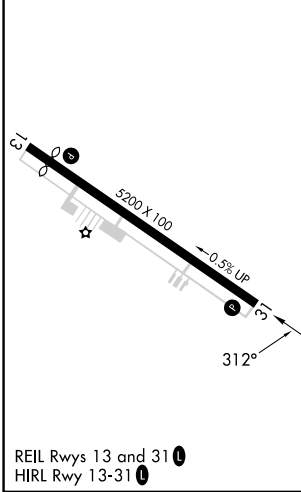
ROCKINGHAM COUNTY NC SHILOH (SIF')

RNP APCH - GPS.	MISSED APPROACH: Climb to 3500 direct GWYNN and hold.
VDP NA when using GSO altimeter setting. Rwy 31 helicopter visibility reduction below ¾ SM NA.	

AWOS-3 119.775	GREENSBORO APP CON 124.35 269.225	UNICOM 122.8 (CTAF) 0
-------------------	--------------------------------------	--------------------------



ELEV 694	TDZE 668
----------	----------



3500	GWYNN	PEWFE 1.9 NM to RW31	KLUTE	VERMS 4 NM Holding Pattern
0.9 NM to RW31	0.9 NM to RW31	1.9 NM to RW31	2.7 NM	6.7 NM
1400	1400	2400	312°	132°
0.9 NM	1 NM	2.7 NM	6.7 NM	4 NM
CATEGORY	A	B	C	D
LNAV MDA	1080-1	412 (400-1)	1080-1½	412 (400-1½)
CIRCLING	1280-1 586 (600-1)	1340-1 646 (700-1)	1360-1¾ 666 (700-1¾)	1440-2½ 746 (800-2½)

REIDSVILLE, NORTH CAROLINA  
Amdt 1 31OCT24

ROCKINGHAM COUNTY NC SHILOH (SIF')  
36°26'N-79°51'W  
RNAV (GPS) RWY 31

SE-2, 10 JUL 2025 to 07 AUG 2025

SE-2, 10 JUL 2025 to 07 AUG 2025

APP CRS <b>312°</b>	Rwy Ldg TDZE Apt Elev	<b>5200</b> <b>668</b> <b>694</b>
------------------------	-----------------------------	---

# RNAV (GPS) RWY 31

## ROCKINGHAM COUNTY NC SHILOH (SIF)

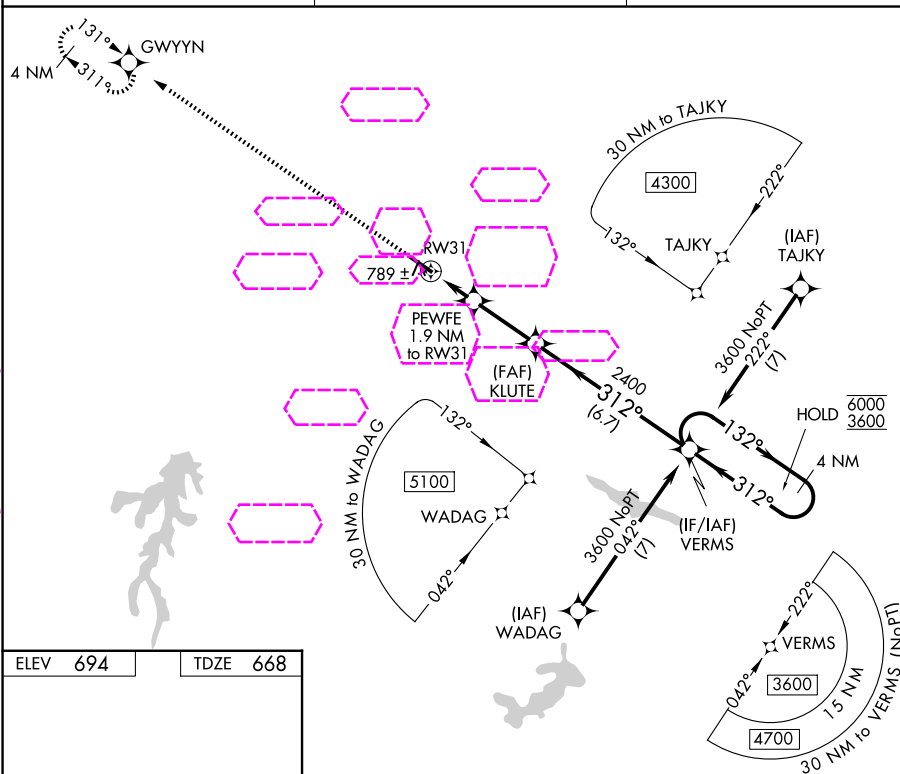
RNP APCH - GPS.

**T** VDP NA when using GSO altimeter setting.  
**A** Rwy 31 helicopter visibility reduction below  $\frac{3}{4}$  SM NA.

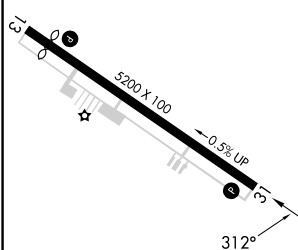
**MISSED APPROACH:** Climb to 3500 direct GWYYN and hold.

AWOS-3  
119,775

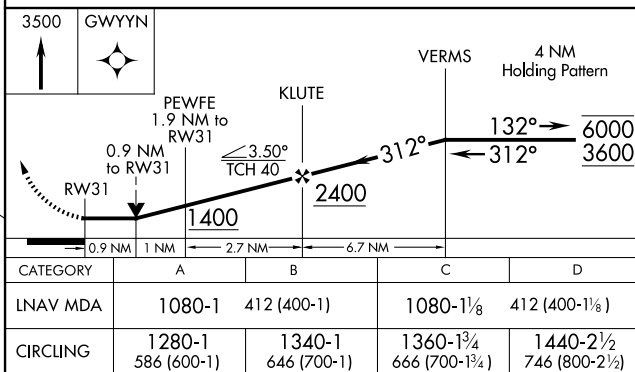
GREENSBORO APP CON  
124.35 269.225

UNICOM  
122.8 (CTAF) **L**

ELEV	694		TDZE	668
------	-----	--	------	-----



REIL Rwy 13 and 31 **L**  
HIRL Rwy 13-31 **L**



REIDSVILLE, NORTH CAROLINA  
Amdt 1 31OCT24

ROCKINGHAM COUNTY NC SHILOH (SIF)  
W RNAV (GPS) RWY 31

36°26'N-79°51'W