

REIDSVILLE, NORTH CAROLINA

AL-6329 (FAA)

24305

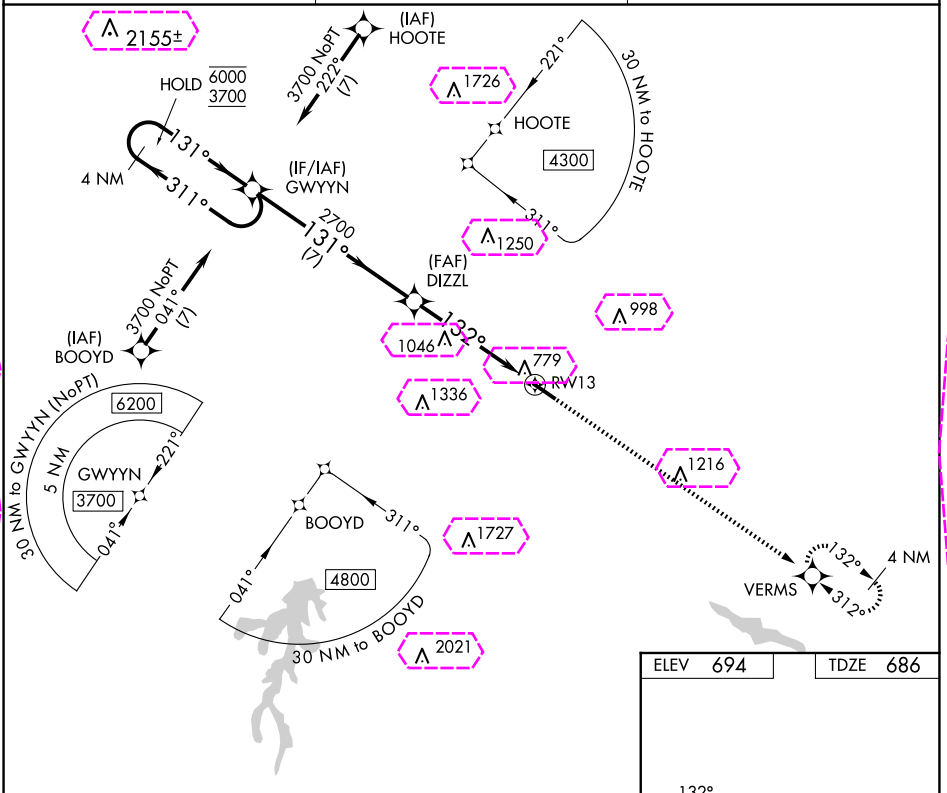
APP CRS	Rwy Idg	4700
132°	TDZE	686
	Apt Elev	694

# RNAV (GPS) RWY 13

ROCKINGHAM COUNTY NC SHILOH (SIF')

RNP APCH - GPS.	MISSED APPROACH: Climb to 3600 direct VERMS and hold.
VDP NA when using GSO altimeter setting. Rwy 13 helicopter visibility reduction below 3/4 SM NA.	

AWOS-3 119.775	GREENSBORO APP CON 124.35 269.225	UNICOM 122.8 (CTAF) 0
-------------------	--------------------------------------	--------------------------



4 NM Holding Pattern GWYYN

6000 ← 311°  
3700 131° →

DIZZL

3.50° TCH 45

1.6 NM to RW13

RW13

2700

131°

132°

7 NM

3.7 NM

1.6

3600

VERMS

CATEGORY	A	B	C	D
LNAV MDA	1380-1	694 (700-1)	1380-2	694 (700-2)
CIRCLING	1380-1	686 (700-1)	1380-2 686 (700-2)	1440-2½ 746 (800-2½)

132

5200 x 100

0.5% UP

132

31

REIL Rwy 13 and 31

HIRL Rwy 13-31

REIDSVILLE, NORTH CAROLINA  
Amdt 1 31OCT24

ROCKINGHAM COUNTY NC SHILOH (SIF')  
36°26'N-79°51'W  
RNAV (GPS) RWY 13

REIDSVILLE, NORTH CAROLINA

AL-6329 (FAA)

25219

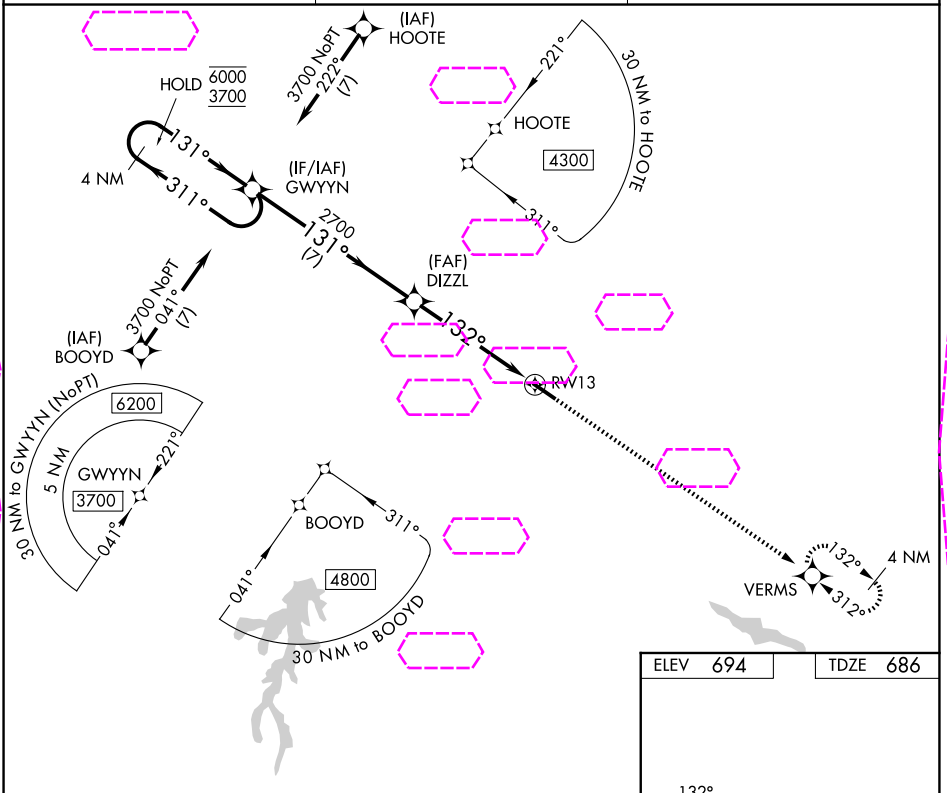
APP CRS	Rwy Ldg	4700
132°	TDZE	686
	Apt Elev	694

# RNAV (GPS) RWY 13

ROCKINGHAM COUNTY NC SHILOH (SIF')

RNP APCH - GPS.	MISSED APPROACH: Climb to 3600 direct VERMS and hold.
VDP NA when using GSO altimeter setting.	
Rwy 13 helicopter visibility reduction below ¾ SM NA.	

AWOS-3 119.775	GREENSBORO APP CON 124.35 269.225	UNICOM 122.8 (CTAF)
-------------------	--------------------------------------	------------------------



4 NM Holding Pattern GWYYN		3600 ↑		VERMS ✧	
6000 3700	← 311° 131° →	DIZZL		132°	
		3.50° TCH 45		1.6 NM to RW13	
		2700		RW13	
		7 NM		3.7 NM	
				1.6	
CATEGORY	A	B	C	D	
LNAV MDA	1380-1	694 (700-1)	1380-2	694 (700-2)	
CIRCLING	1380-1	686 (700-1)	1380-2 686 (700-2)	1440-2½ 746 (800-2½)	
REIL Rwy 13 and 31 HIRL Rwy 13-31					

REIDSVILLE, NORTH CAROLINA  
Amdt 1 31OCT24

ROCKINGHAM COUNTY NC SHILOH (SIF')  
36°26'N-79°51'W  
RNAV (GPS) RWY 13