

KEWANEE, ILLINOIS

AL-6300 (FAA)

18144

WAAS CH 72833 W09A	APP CRS 093°	Rwy Idg TDZE 856 Apt Elev 858
--	------------------------	---

RNAV (GPS) RWY 9

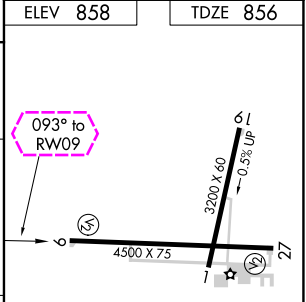
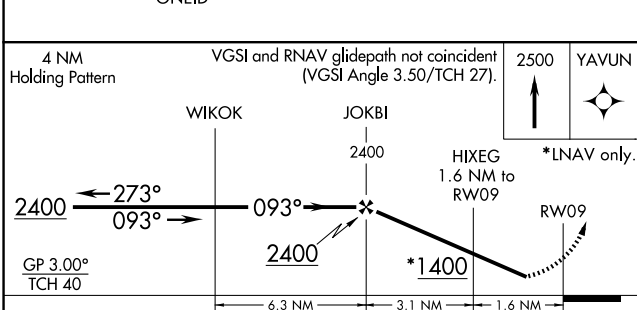
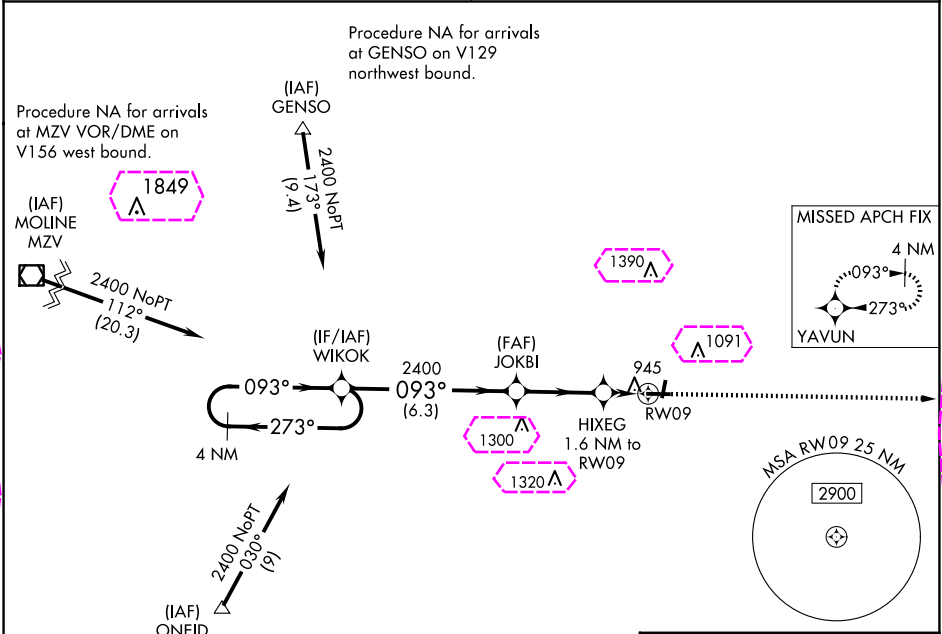
KEWANEE MUNI (EZI)

RNP APCH.

NA Rwy 9 helicopter visibility reduction below 3/4 SM NA. Baro-VNAV NA. Use Galesburg altimeter setting, when not received, use Moline altimeter setting and increase all DA to 1210 feet and all visibilities 1/2 SM; increase all MDA 40 feet, and Circling Cat C visibility 1/4 SM.

MISSED APPROACH:
Climb to 2500 direct YAVUN and hold.

QUAD CITY APP CON ★ 133.275 257.8	UNICOM 122.8 (CTAF) 0
---	---------------------------------



CATEGORY	A	B	C	D
LPV DA	1181-1 3/8	325 (400-1 1/8)		NA
LNAV/VNAV DA	1181-1 1/8	325 (400-1 1/8)		NA
LNAV MDA	1300-1	444 (500-1)	1300-1 3/8 444 (500-1 3/8)	NA
CIRCLING	1340-1 482 (500-1)	1520-1 662 (700-1)	1520-1 3/4 662 (700-1 3/4)	NA

MIRL Rwy 1-19 and 9-27 0

KEWANEE, ILLINOIS
Amdt 1B 24MAY18

41°12'N - 89°58'W

KEWANEE MUNI (EZI)

RNAV (GPS) RWY 9

EC-3, 10 JUL 2025 to 07 AUG 2025

EC-3, 10 JUL 2025 to 07 AUG 2025

KEWANEE, ILLINOIS

AL-6300 (FAA)

25219

WAAS CH 72833 W09A	APP CRS 093°	Rwy Ldg TDZE 856 Apt Elev 858
--	------------------------	---

RNAV (GPS) RWY 9

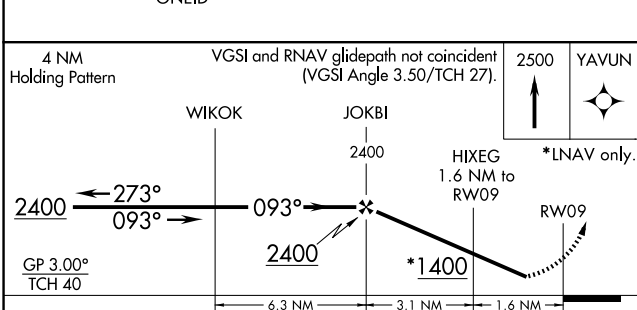
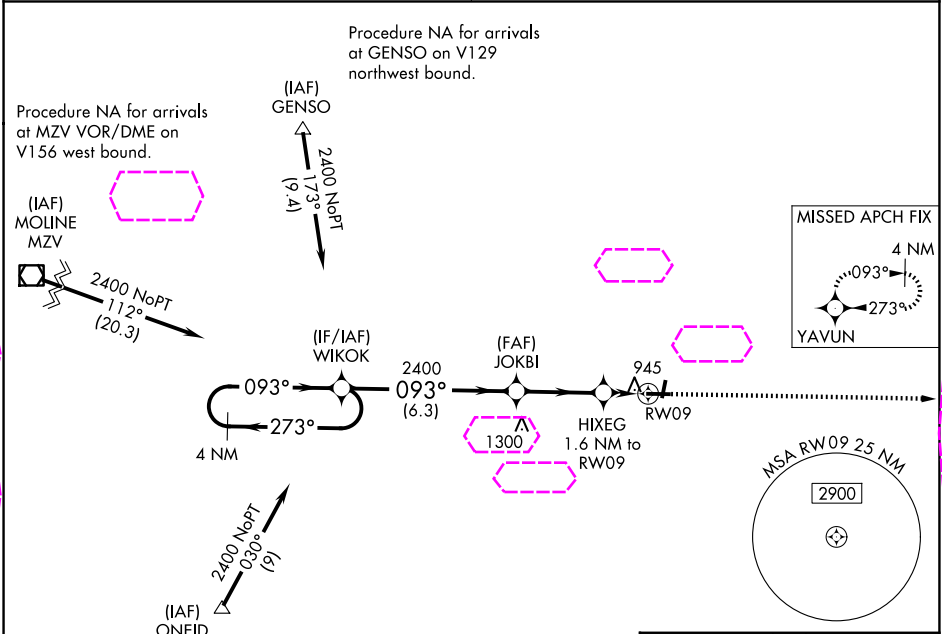
KEWANEE MUNI (EZI)

RNP APCH.

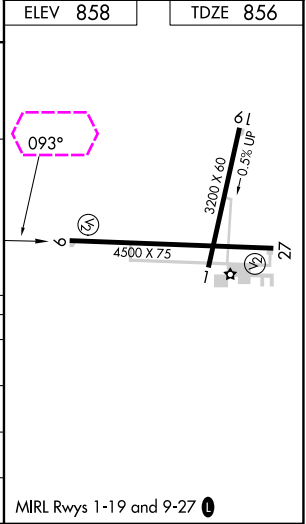
▼ Rwy 9 helicopter visibility reduction below ¾ SM NA. Baro-VNAV NA. Use Galesburg altimeter setting, when not received, use Moline altimeter setting and increase all DA to 1210 feet and all visibilities ½ SM; increase all MDA 40 feet, and Circling Cat C visibility ¼ SM.

MISSED APPROACH:
Climb to 2500 direct YAVUN and hold.

QUAD CITY APP CON ★ 133.275 257.8	UNICOM 122.8 (CTAF) 0
---	---------------------------------



CATEGORY	A	B	C	D
LPV DA	1181-1⅛	325 (400-1⅛)		NA
LNAV/VNAV DA	1181-1⅛	325 (400-1⅛)		NA
LNAV MDA	1300-1	444 (500-1)	1300-1⅛ 444 (500-1⅛)	NA
CIRCLING	1340-1 482 (500-1)	1520-1 662 (700-1)	1520-1⅜ 662 (700-1⅜)	NA



KEWANEE, ILLINOIS
Amdt 1B 24MAY18

41°12'N - 89°58'W

KEWANEE MUNI (EZI)

RNAV (GPS) RWY 9

EC-3, 07 AUG 2025 to 04 SEP 2025

EC-3, 07 AUG 2025 to 04 SEP 2025