

KEWANEE, ILLINOIS

AL-6300 (FAA)

22279

WAAS CH 56433 W27A	APP CRS 273°	Rwy Idg 4500 TDZE 858 Apt Elev 858
--	------------------------	---

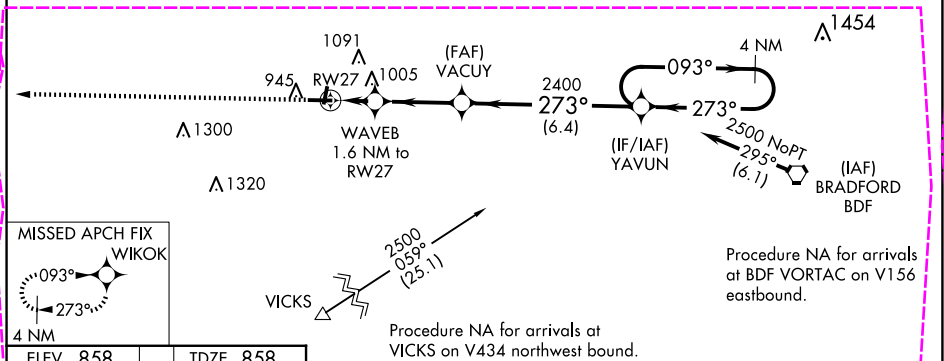
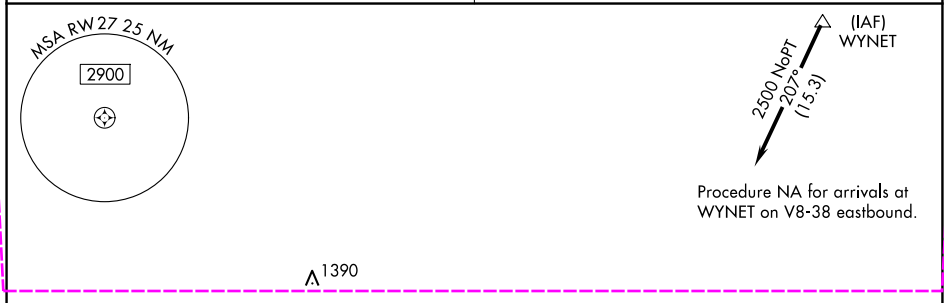
RNAV (GPS) RWY 27

KEWANEE MUNI (EZI)

Baro-VNAV NA. DME/DME RNP-0.3 NA. Use Galesburg altimeter setting; when not received, use Moline altimeter setting and increase all DA 29 feet and all MDA 40 feet, increase LPV all Cats and LNAV Cat C visibility $\frac{1}{8}$ mile, and Circling Cat C visibility $\frac{1}{4}$ mile.

MISSED APPROACH: Climb to 2400 direct WIKOK and hold.

QUAD CITY APP CON ★ 133.275 257.8	UNICOM 122.8 (CTAF) 0
---	--



MISSED APCH FIX WIKOK		VGS and RNAV glidepath not coincident (VGS Angle 3.00/TCH 23).		4 NM Holding Pattern	
ELEV 858		TDZE 858		GP 3.00° TCH 40	
*LNAV only		WAVEB 1.6 NM to RW27		VACU	
RW27		2400		273°	
1.6 NM		3.1 NM		6.4 NM	
CATEGORY		A	B	C	D
LPV DA		1183-1 $\frac{1}{8}$ 325 (400-1 $\frac{1}{8}$)			NA
LNAV/VNAV DA		1212-1 $\frac{1}{4}$ 354 (400-1 $\frac{1}{4}$)			NA
LNAV MDA		1340-1	482 (500-1)	1340-1 $\frac{1}{8}$ 482 (500-1 $\frac{1}{8}$)	NA
CIRCLING		1340-1 482 (500-1)	1520-1 662 (700-1)	1520-1 $\frac{1}{4}$ 662 (700-1 $\frac{1}{4}$)	NA

KEWANEE, ILLINOIS

Amcl **1A 05MAR15**

41°12'N-89°58'W

KEWANEE MUNI (EZI)

RNAV (GPS) RWY 27

WAAS CH 56433 W27A	APP CRS 273°	Rwy Ldg TDZE Apt Elev	4500 858 858
--	------------------------	-----------------------------	---

RNAV (GPS) RWY 27

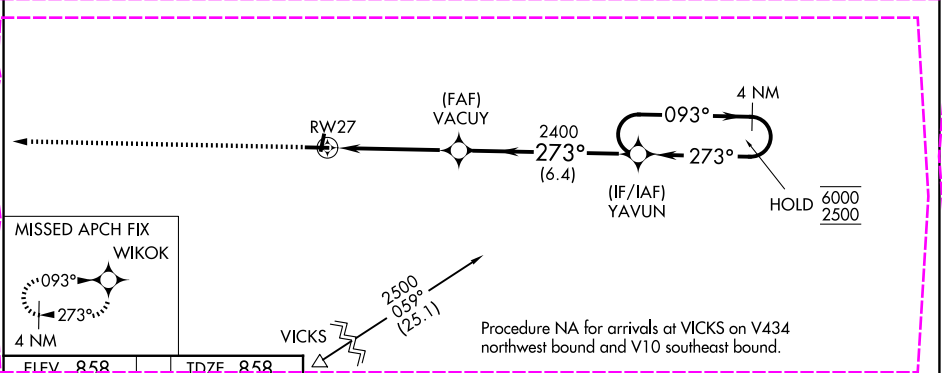
KEWANEE MUNI (EZI)

RNP APCH - GPS.

Baro-VNAV NA. Use GBG altimeter setting; when not received use MLI altimeter setting and increase LPV DA to 1213 feet, LNAV/VNAV DA to 1242 feet and all visibilities $\frac{1}{8}$ SM; increase all MDAs 40 feet and LNAV visibility Cat C $\frac{1}{8}$ SM, and Circling visibility Cat C $\frac{1}{4}$ SM.

MISSED APPROACH:
Climb to 2500 direct WIKOK and hold.

QUAD CITY APP CON ★ 133.275 257.8	UNICOM 122.8 (CTAF) 0
---	---------------------------------



2500

WIKOK

VGSI and RNAV glidepath not coincident (VGSI Angle 3.00/TCH 23).

4 NM

Holding Pattern

273°

2400

2400

273°

093°

6000

2500

GP 3.00°

TCH 40

CATEGORY	A	B	C	D
LPV DA	1183-1	325 (400-1)		NA
LNAV/VNAV DA	1212-1	354 (400-1)		NA
LNAV MDA	1380-1	522 (600-1)	1380-1½ 522 (600-1½)	NA
CIRCLING	1380-1 522 (600-1)	1520-1 662 (700-1)	1520-1¾ 662 (700-1¾)	NA

MIRL Rwy 1-19 and 9-27 0