

KEWANEE, ILLINOIS

AL-6300 (FAA)

22279

WAAS CH <b>50333</b> <b>W01A</b>	APP CRS <b>013°</b>	Rwy Idg <b>3200</b> TDZE <b>857</b> Apt Elev <b>858</b>
--	------------------------	---

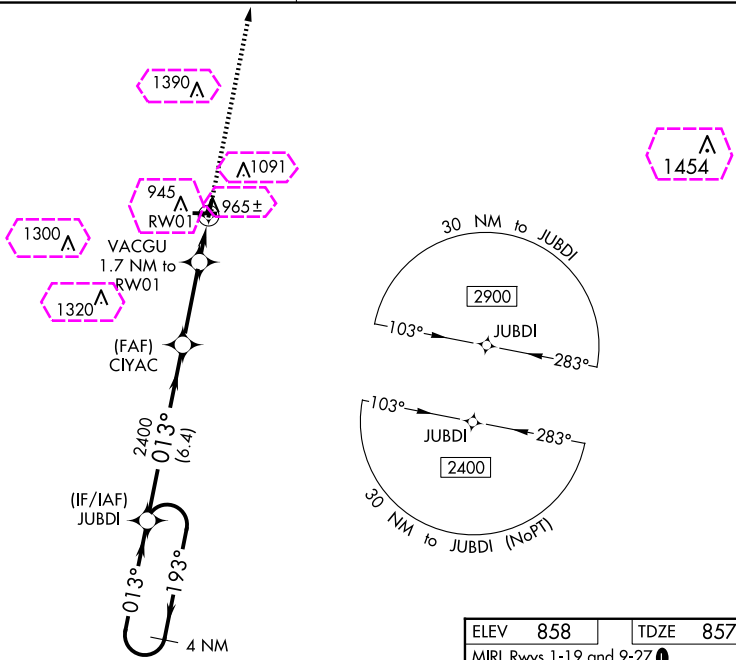
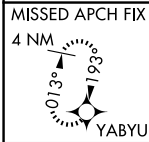
**RNAV (GPS) RWY 1**  
KEWANEE MUNI (EZI)

**NA** Baro-VNAV NA. DME/DME RNP-0.3 NA. Helicopter visibility reduction below  $\frac{3}{4}$  SM NA. Use Galesburg altimeter setting; when not received, use Moline altimeter setting and increase all DA 29 feet and all MDA 40 feet, increase LPV all Cats visibility  $\frac{1}{8}$  mile, and Circling Cat C visibility  $\frac{1}{4}$  mile.

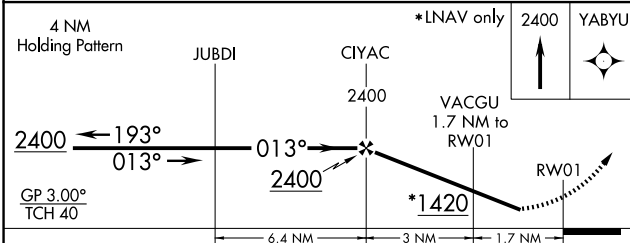
**MISSED APPROACH:**  
Climb to 2400 direct YABYU and hold.

QUAD CITY APP CON ★  
**133.275 257.8**

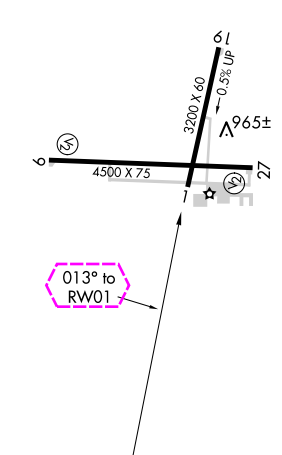
UNICOM  
**122.8 (CTAF) 0**



ELEV 858 TDZE 857  
MIRL Rwy 1-19 and 9-27 0



CATEGORY	A	B	C	D
LPV DA	1182-1 $\frac{1}{8}$	325 (400-1 $\frac{1}{8}$ )		NA
RNAV/VNAV DA	1212-1 $\frac{1}{4}$	355 (400-1 $\frac{1}{4}$ )		NA
RNAV MDA	1300-1	443 (500-1)	1300-1 $\frac{3}{8}$ 443 (500-1 $\frac{3}{8}$ )	NA
<b>CIRCLING</b>	1340-1 482 (500-1)	1520-1 662 (700-1)	1520-1 $\frac{3}{4}$ 662 (700-1 $\frac{3}{4}$ )	NA



KEWANEE, ILLINOIS  
Amdt 1A 05MAR15

41°12'N-89°58'W

KEWANEE MUNI (EZI)  
**RNAV (GPS) RWY 1**

EC-3, 10 JUL 2025 to 07 AUG 2025

EC-3, 10 JUL 2025 to 07 AUG 2025

KEWANEE, ILLINOIS

AL-6300 (FAA)

25219

WAAS CH <b>50333</b> <b>W01A</b>	APP CRS <b>013°</b>	Rwy Ldg <b>3200</b> TDZE <b>857</b> Apt Elev <b>858</b>
--	------------------------	---

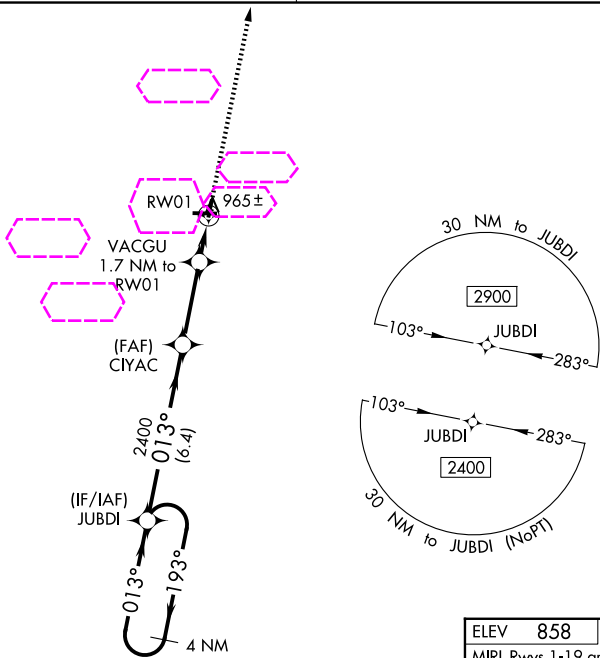
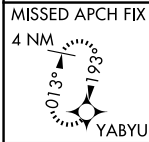
**RNAV (GPS) RWY 1**  
KEWANEE MUNI (EZI)

**Baro-VNAV NA. DME/DME RNP-0.3 NA. Helicopter visibility reduction below ¼ SM NA.**  
**Use Galesburg altimeter setting; when not received, use Moline altimeter setting and increase all DA 29 feet and all MDA 40 feet, increase LPV all Cats visibility ½ mile, and Circling Cat C visibility ¼ mile.**

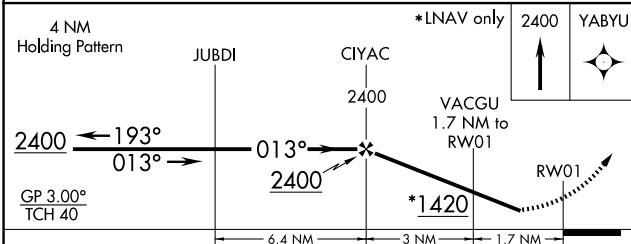
**MISSED APPROACH:**  
Climb to 2400 direct YABYU and hold.

QUAD CITY APP CON ★  
**133.275 257.8**

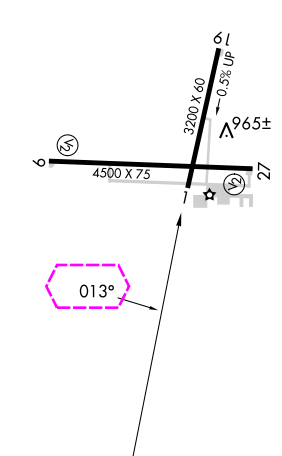
UNICOM  
**122.8 (CTAF) 0**



ELEV **858** TDZE **857**  
MIRL Rwy 1-19 and 9-27 0



CATEGORY	A	B	C	D
LPV DA	1182-1½	325 (400-1½)		NA
LNNAV/VNAV DA	1212-1¼	355 (400-1¼)		NA
LNNAV MDA	1300-1	443 (500-1)	1300-1½ 443 (500-1½)	NA
CIRCLING	1340-1 482 (500-1)	1520-1 662 (700-1)	1520-1¾ 662 (700-1¾)	NA



KEWANEE, ILLINOIS  
Amdt 1A 05MAR15

41°12'N-89°58'W

KEWANEE MUNI (EZI)  
**RNAV (GPS) RWY 1**

EC-3, 07 AUG 2025 to 04 SEP 2025

EC-3, 07 AUG 2025 to 04 SEP 2025