

RNAV (GPS) RWY 19

KEWANEE, ILLINOIS

AL-6300 (FAA)

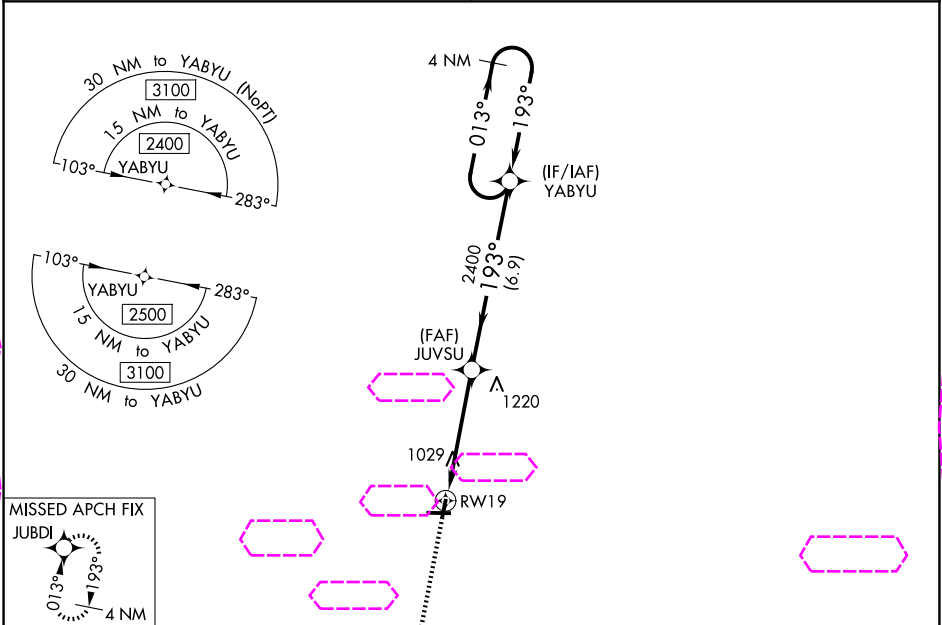
25219

WAAS CH <b>97533</b> <b>W19A</b>	APP CRS <b>193°</b>	Rwy Ldg <b>3200</b> TDZE <b>857</b> Apt Elev <b>858</b>
--	------------------------	---

RNAV (GPS) RWY 19  
KEWANEE MUNI (EZI)

RNP APCH - GPS.	Baro-VNAV NA. Use Galesburg altimeter setting. When local altimeter setting not received, use Moline altimeter setting and increase LPV DA to 1212 feet; increase LNAV/VNAV DA to 1446 feet and all visibilities $\frac{1}{8}$ SM. Increase all MDAs 40 feet and LNAV visibility Cat C $\frac{1}{8}$ SM, and Circling visibility Cat C $\frac{1}{4}$ .	MISSED APPROACH: Climb to 2400 direct JUBDI and hold.
-----------------	--	--

QUAD CITY APP CON ★ <b>133.275 257.8</b>	UNICOM <b>122.8 (CTAF) 0</b>
---	---------------------------------



ELEV 858	TDZE 857
----------	----------

193° 61 3200 X 40 0.5% Up 4500 X 75 6 ZL		2400 JUBDI 4 NM Holding Pattern	JUVSU 2400 YABYU	013° 2400 193° GP 3.00° TCH 40
RW19 4.8 NM 6.9 NM				
CATEGORY	A	B	C	D
LPV DA	1182-1	325 (400-1)		NA
LNAV/VNAV DA	1416-1 $\frac{5}{8}$	559 (600-1 $\frac{1}{2}$ )		NA
LNAV MDA	1400-1	543 (600-1)	1400-1 $\frac{5}{8}$ 543 (600-1 $\frac{1}{2}$ )	NA
CIRCLING	1400-1 542 (600-1)	1520-1 662 (700-1)	1520-1 $\frac{3}{4}$ 662 (700-1 $\frac{3}{4}$ )	NA

KEWANEE, ILLINOIS  
Amdt 1B 06OCT22

41°12'N-89°58'W

KEWANEE MUNI (EZI)  
RNAV (GPS) RWY 19