

SAIPAN ISLAND, CQ



AL-6293 (FAA)

25163

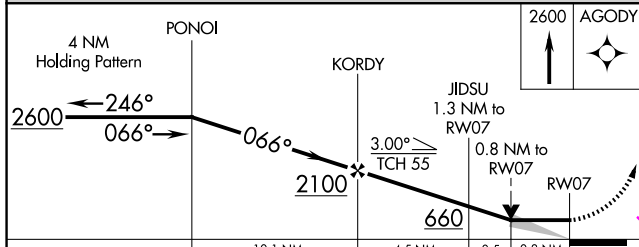
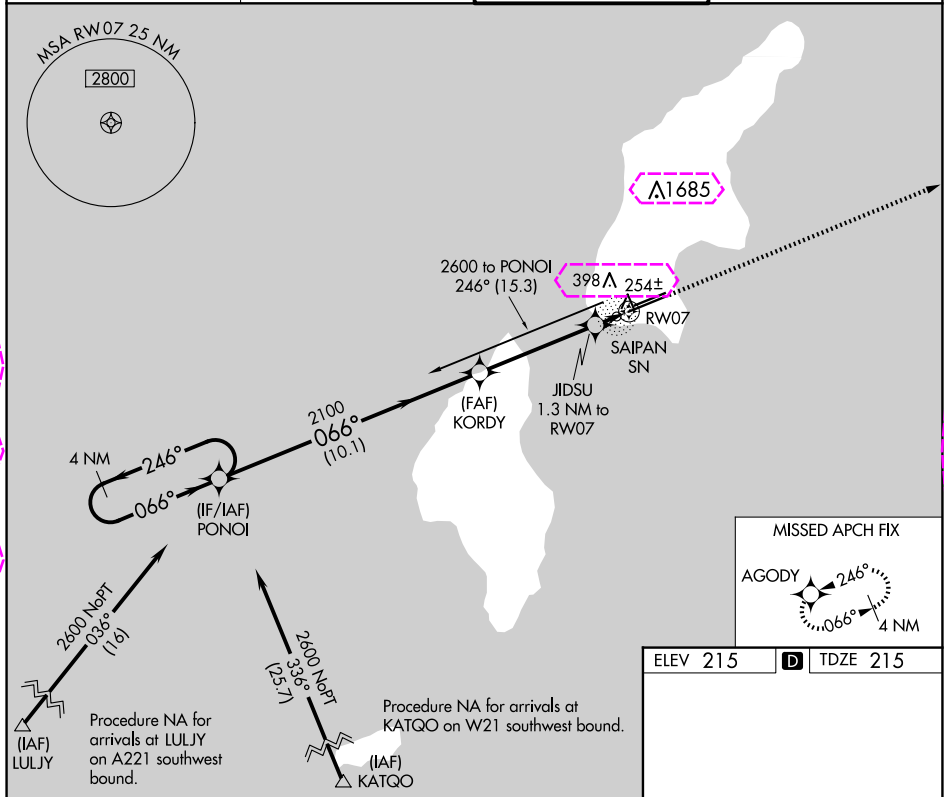
APP CRS	Rwy Ldg	8010
066°	TDZE	215
	Apt Elev	215


RNAV (GPS) RWY 7

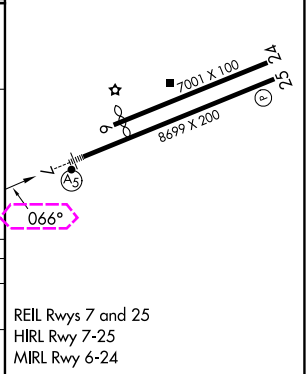
FRANCISCO C ADA/SAIPAN INTL (GSN)(PGSN)

 Circling NA north of Rwy 6-24. DME/DME RNP-0.3 NA.	 MALSR	MISSED APPROACH: Climb 2600 direct AGODY and hold.
---	---	--

ATIS 127.2	GUAM CERAP 118.4 290.5	SAIPAN TOWER 125.7 256.9	GND CON 121.8
---------------	---------------------------	-----------------------------	------------------



CATEGORY	A	B	C	D
LNAV MDA	520-1/2	305 (400-1/2)	720-1 1/2 505 (600-1 1/2)	780-2 565 (600-2)
 CIRCLING	720-1	505 (600-1)	720-1 1/2 505 (600-1 1/2)	780-2 565 (600-2)



SAIPAN ISLAND, CQ

Amdt 1 02MAR17

FRANCISCO C ADA/SAIPAN INTL (GSN)(PGSN)

15°07'N-145°44'E

RNAV (GPS) RWY 7

PAC, 12 JUN 2025 to 07 AUG 2025

PAC, 12 JUN 2025 to 07 AUG 2025

SAIPAN ISLAND, MP



AL-6293 (FAA)

25219

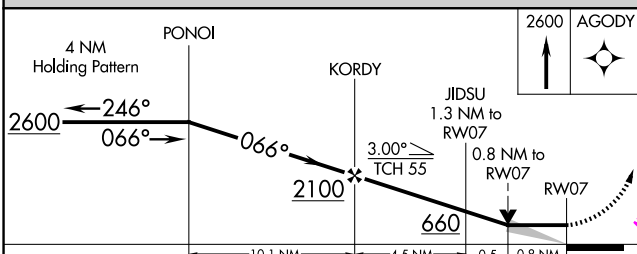
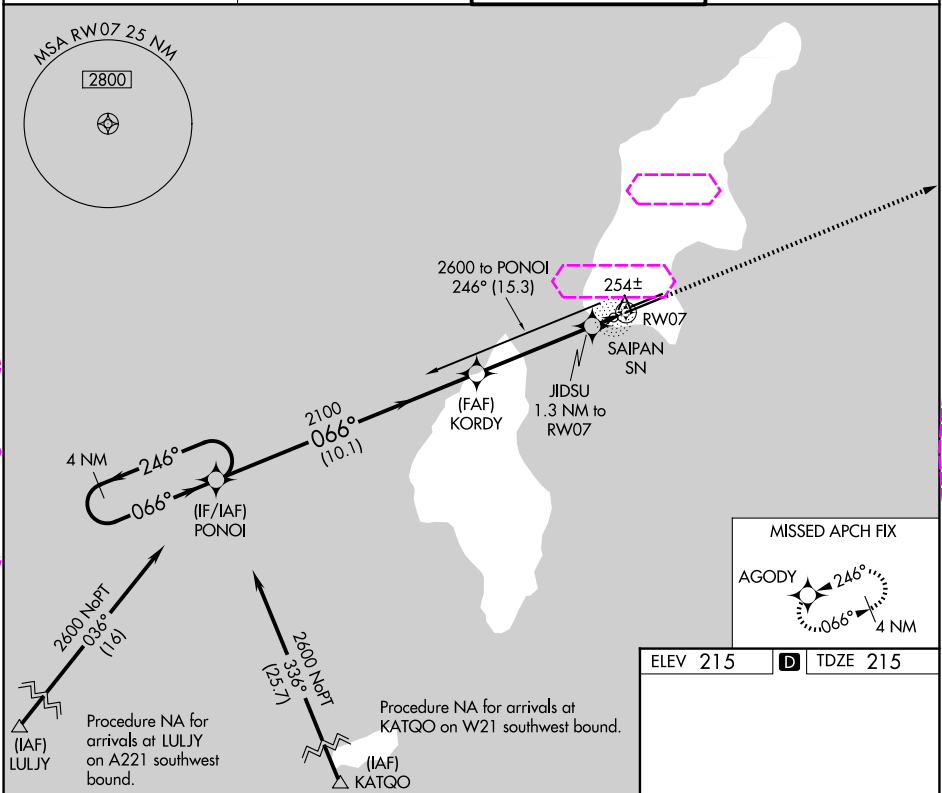
APP CRS	Rwy Ldg	8010
066°	TDZE	215
	Apt Elev	215

RNAV (GPS) RWY 7

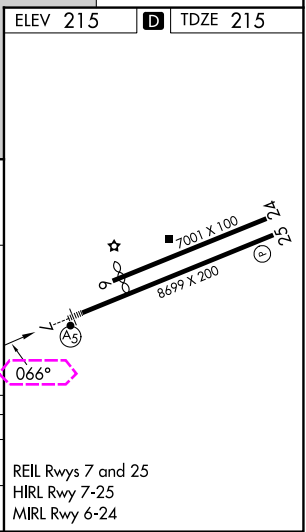
FRANCISCO C ADA/SAIPAN INTL (GSN)(PGSN)

 Circling NA north of Rwy 6-24. DME/DME RNP-0.3 NA.	 MALS	MISSED APPROACH: Climb 2600 direct AGODY and hold.
---	--	--

ATIS 127.2	GUAM CERAP 118.4 290.5	SAIPAN TOWER 125.7 256.9	GND CON 121.8
---------------	---------------------------	-----------------------------	------------------



CATEGORY	A	B	C	D
LNVA MDA	520-1/2	305 (400-1/2)	720-1/2	780-2
CIRCLING	720-1	505 (600-1)	505 (600-1/2)	565 (600-2)



SAIPAN ISLAND, MP

Amdt 1 02MAR17

FRANCISCO C ADA/SAIPAN INTL (GSN)(PGSN)

15°07'N-145°44'E

RNAV (GPS) RWY 7

PAC, 07 AUG 2025 to 02 OCT 2025

PAC, 07 AUG 2025 to 02 OCT 2025