

SAIPAN ISLAND, CG

AL-6293 (FAA)

25163

APP CRS	Rwy Ldg	8010
246°	TDZE	210
	Apt Elev	215

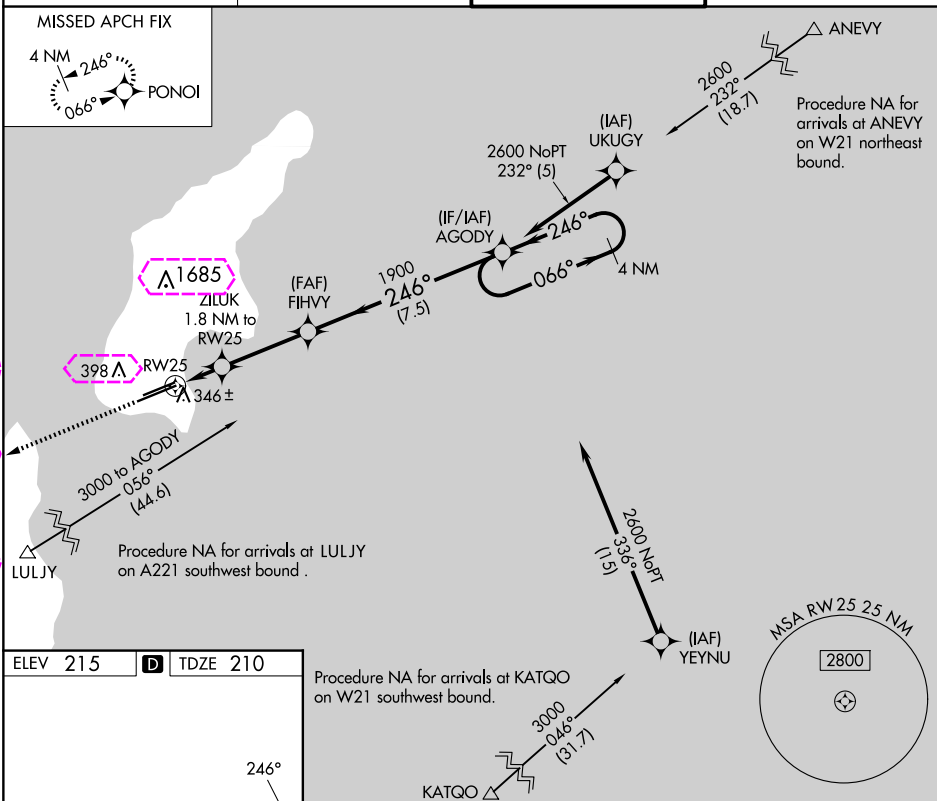
RNAV (GPS) RWY 25

FRANCISCO C ADA/SAIPAN INTL (GSN)(PGSN)

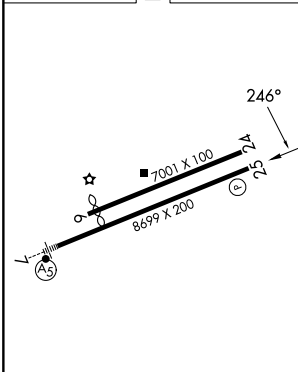
RNP APCH - GPS.	MISSED APPROACH: Climb to 2600 direct PONOI and hold.
<p>⚠ Circling NA north of Rwy 6-24. Rwy 25 helicopter visibility reduction below $\frac{3}{4}$ NA.</p>	

ATIS 127.2	GUAM CERAP 118.4 290.5	SAIPAN TOWER 125.7 256.9	GND CON 121.8
---------------	---------------------------	-----------------------------	------------------

MISSED APCH FIX



ELEV 215	D	TDZE 210
----------	---	----------



Procedure NA for arrivals at KATQO on W21 southwest bound.

KATQO

2600	PONOI	VGSi and descent angles not coincident (VGSi Angle 3.00/TCH 75).			
		AGODY			
		4 NM Holding Pattern			
		ZILUK 1.8 NM to RW25			
		FIHVVY			
		0.9 NM to RW25			
		RW25			
		840			
		1900			
		0.9 NM 0.9 NM 3.3 NM 7.5 NM			
CATEGORY	A	B	C	D	
LNAV MDA	600-1	390 (400-1)	600-1½	390 (400-1½)	
CIRCLING	720-1	505 (600-1)	720-1½	780-2	
			505 (600-1½)	565 (600-2)	

REIL Rws 7 and 25

HIRL Rwy 7-25

MIRL Rwy 6-24

SAIPAN ISLAND, CG

Amdt 1A 08SEP22

FRANCISCO C ADA/SAIPAN INTL (GSN)(PGSN)

15°07'N-145°44'E

RNAV (GPS) RWY 25

PAC, 12 JUN 2025 to 07 AUG 2025

PAC, 12 JUN 2025 to 07 AUG 2025

SAIPAN ISLAND, MP

AL-6293 (FAA)

25219

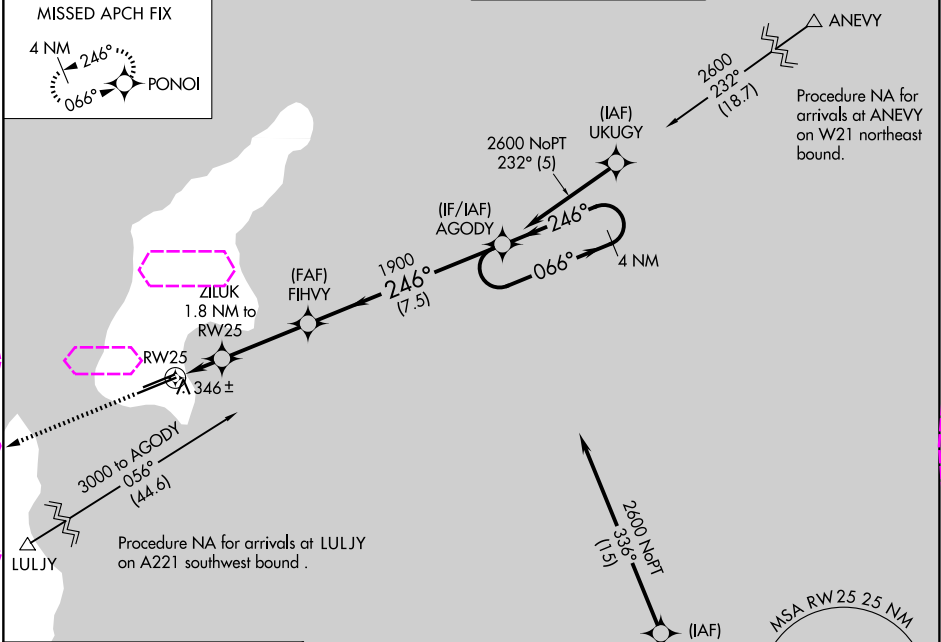
APP CRS	Rwy Ldg	8010
246°	TDZE	210
	Apt Elev	215

RNAV (GPS) RWY 25

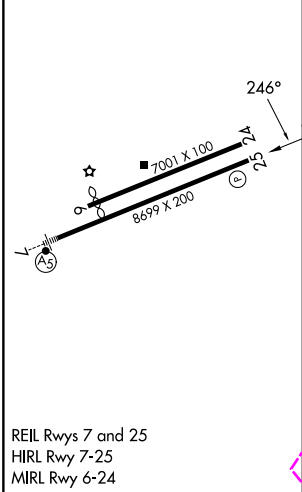
FRANCISCO C ADA/SAIPAN INTL (GSN)(PGSN)

RNP APCH - GPS. Circling NA north of Rwy 6-24. Rwy 25 helicopter visibility reduction below ¾ NA.	MISSED APPROACH: Climb to 2600 direct PONOI and hold.
------------------------------------------------------------------------------------------------------	-------------------------------------------------------

ATIS 127.2	GUAM CERAP 118.4 290.5	SAIPAN TOWER 125.7 256.9	GND CON 121.8
---------------	---------------------------	-----------------------------	------------------



ELEV 215	D	TDZE 210
----------	---	----------



Procedure NA for arrivals at KATQO on W21 southwest bound.	KATQO	3000 046° (31.7)	YEYNU	2600 NoPT 336° (119)
2600	PONOI	VGSI and descent angles not coincident (VGSI Angle 3.00/TCH 75).	AGODY	4 NM Holding Pattern
ZILUK 1.8 NM to RW25	FIHVVY	0.9 NM to RW25	1900	246°
840	8699 X 200	7001 X 100	246°	066°
0.9 NM	0.9 NM	3.3 NM	7.5 NM	2600
CATEGORY	A	B	C	D
LNAV MDA	600-1	390 (400-1)	600-1½	390 (400-1½)
CIRCLING	720-1	505 (600-1)	720-1½	780-2
			505 (600-1½)	565 (600-2)

SAIPAN ISLAND, MP

Amdt 1A 08SEP22

FRANCISCO C ADA/SAIPAN INTL (GSN)(PGSN)

15°07'N-145°44'E

RNAV (GPS) RWY 25

PAC, 07 AUG 2025 to 02 OCT 2025

PAC, 07 AUG 2025 to 02 OCT 2025