

SAIPAN ISLAND, **CQ**

AL-6293 (FAA)

25163

NDB SN	APP CRS	Rwy Ldg	8010
312	081°	TDZE	215
		Apt Elev	215

NDB Y RWY 7

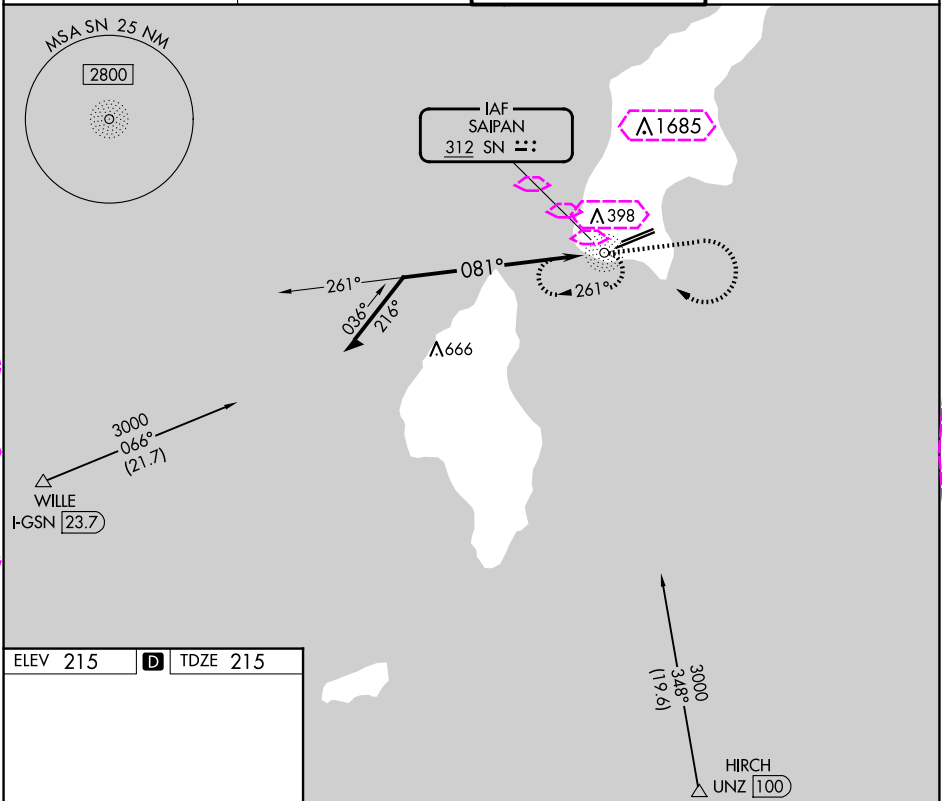
FRANCISCO C ADA/SAIPAN INTL (GSN)(PGSN)

Circling NA north of Rwy 6-24.

MALSR

MISSED APPROACH: Climb to 2400 then climbing right turn to 3000 direct SN NDB and hold.

ATIS 127.2	GUAM CERAP 118.4 290.5	SAIPAN TOWER 125.7 256.9	GND CON 121.8
----------------------	----------------------------------	------------------------------------	-------------------------



ELEV 215

D

TDZE 215

REIL Rwy 7 and 25
HIRL Rwy 7-25
MIRL Rwy 6-24

Remain within 10 NM

SN NDB

2400

3000

SN

CATEGORY	A	B	C	D
S-7	900-3/4	685 (700-3/4)	900-1 1/2	685 (700-1 1/2)
CIRCLING	900-1	685 (700-1)	900-2 685 (700-2)	900-2 1/4 685 (700-2 1/4)

SAIPAN ISLAND, **CQ**

Amdt 6 02MAR17

FRANCISCO C ADA/SAIPAN INTL (GSN)(PGSN)

15°07'N-145°44'E

NDB Y RWY 7

PAC, 12 JUN 2025 to 07 AUG 2025

PAC, 12 JUN 2025 to 07 AUG 2025

SAIPAN ISLAND, MP

AL-6293 (FAA)

25219

NDB SN	APP CRS	Rwy Ldg	8010
312	081°	TDZE	215
		Apt Elev	215

NDB Y RWY 7

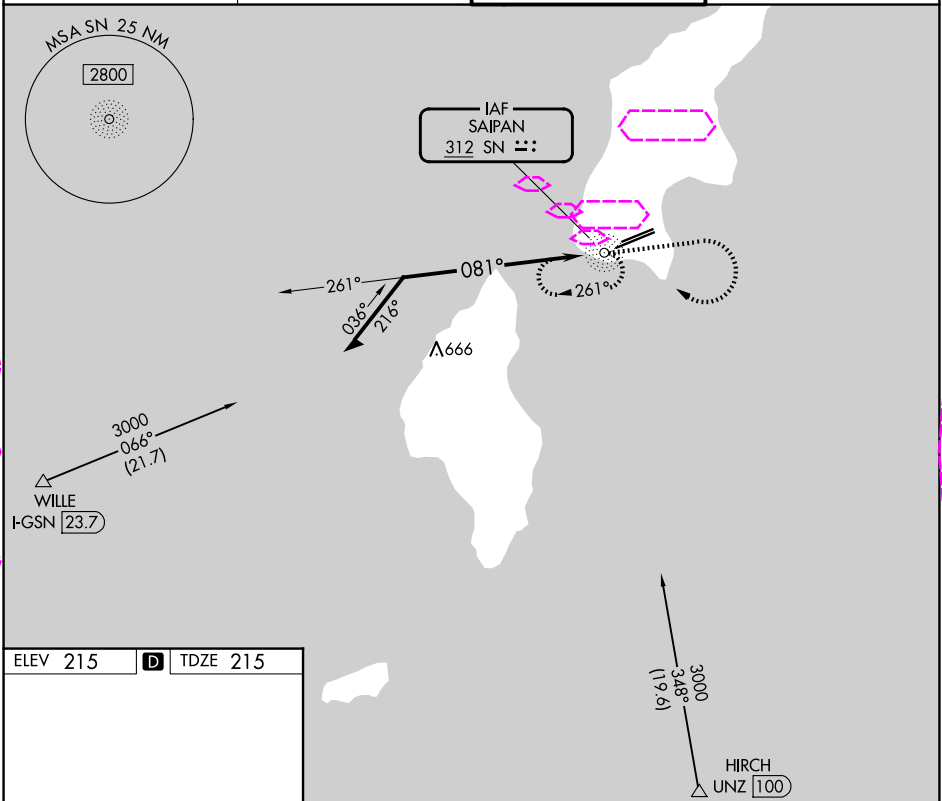
FRANCISCO C ADA/SAIPAN INTL (GSN)(PGSN)

Circling NA north of Rwy 6-24.

MALSR

MISSED APPROACH: Climb to 2400 then climbing right turn to 3000 direct SN NDB and hold.

ATIS 127.2	GUAM CERAP 118.4 290.5	SAIPAN TOWER 125.7 256.9	GND CON 121.8
---------------	---------------------------	-----------------------------	------------------



ELEV 215

D

TDZE 215

REIL Rwy 7 and 25

HIRL Rwy 7-25

MIRL Rwy 6-24

7001 X 100

8699 X 200

081°

Remain within 10 NM

SN NDB

2400

3000

SN

2000

261°

081°

3000

CATEGORY	A	B	C	D
S-7	900-¾	685 (700-¾)	900-1½	685 (700-1½)
CIRCLING	900-1	685 (700-1)	900-2 685 (700-2)	900-2¼ 685 (700-2¼)

SAIPAN ISLAND, MP

Amdt 6 02MAR17

FRANCISCO C ADA/SAIPAN INTL (GSN)(PGSN)

15°07'N-145°44'E

NDB Y RWY 7

PAC, 07 AUG 2025 to 02 OCT 2025

PAC, 07 AUG 2025 to 02 OCT 2025