


NDB SN <u>312</u>	APP CRS 246°	Rwy Ldg TDZE Apt Elev	8010 210 215
-----------------------------	------------------------	-----------------------------	---

NDB RWY 25

FRANCISCO C ADA/SAIPAN INTL (GSN)(PGSN)

	Circling NA north of Rwy 6-24. Rwy 25 helicopter visibility reduction below ¾ SM NA. DME required.		MISSED APPROACH: Climb to 2000 then climbing left turn to 2800 direct SN NDB and hold.	
	ATIS 127.2	GUAM CERAP 118.4 290.5	SAIPAN TOWER 125.7 256.9	GND CON 121.8

DME REQUIRED

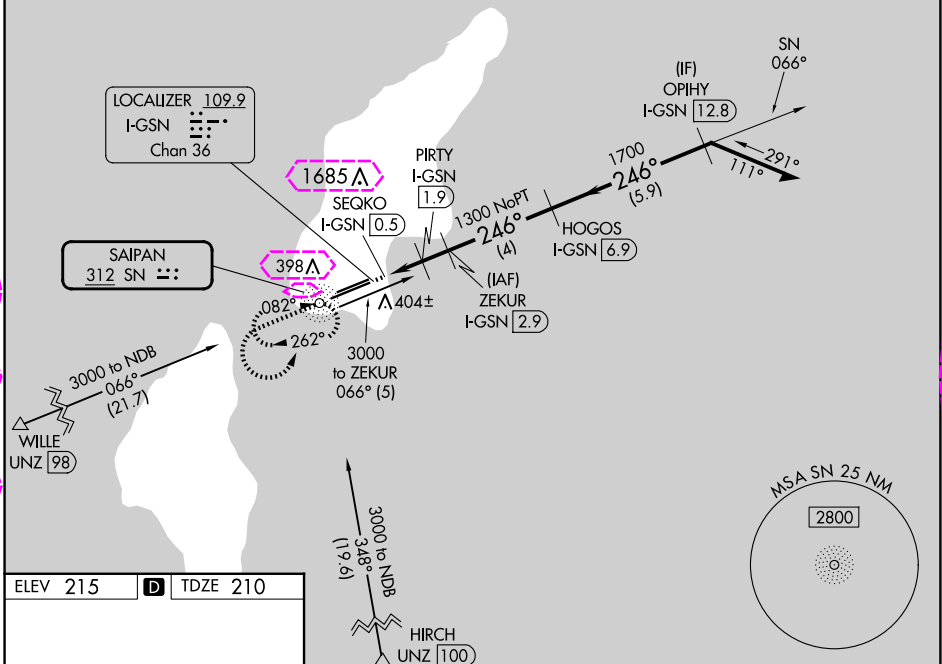


Diagram illustrating a parallel approach procedure for Runway 25. The diagram shows a 246° heading, a 25° bank angle, and a 24° climb gradient. The procedure includes a 3000 ft altitude, a 2.9° climb gradient, and a 2600 ft altitude. The procedure is categorized as S-25, A, B, C, and D. The diagram also shows the relative positions of Runways 7 and 25, and the HIRL and MIRL lights.

CATEGORY	A	B	C	D
S-25	720-1	510 (600-1)	720-1 $\frac{3}{8}$	510 (600-1 $\frac{3}{8}$)
C CIRCLING	720-1	505 (600-1)	720-1 $\frac{1}{2}$	780-2
			505 (600-1 $\frac{1}{2}$)	565 (600-2)

SAIPAN ISLAND, CQ

Amdt 3A 03JAN19

FRANCISCO C ADA/SAIPAN INTL (GSN)(PGSN)

15°07'N-145°44'E

NDB RWY 25

PAC, 12 JUN 2025 to 07 AUG 2025

PAC, 12 JUN 2025 to 07 AUG 2025

SAIPAN ISLAND, MP

AL-6293 (FAA)

25219

NDB SN	APP CRS	Rwy Ldg	8010
312	246°	TDZE	210
		Apt Elev	215

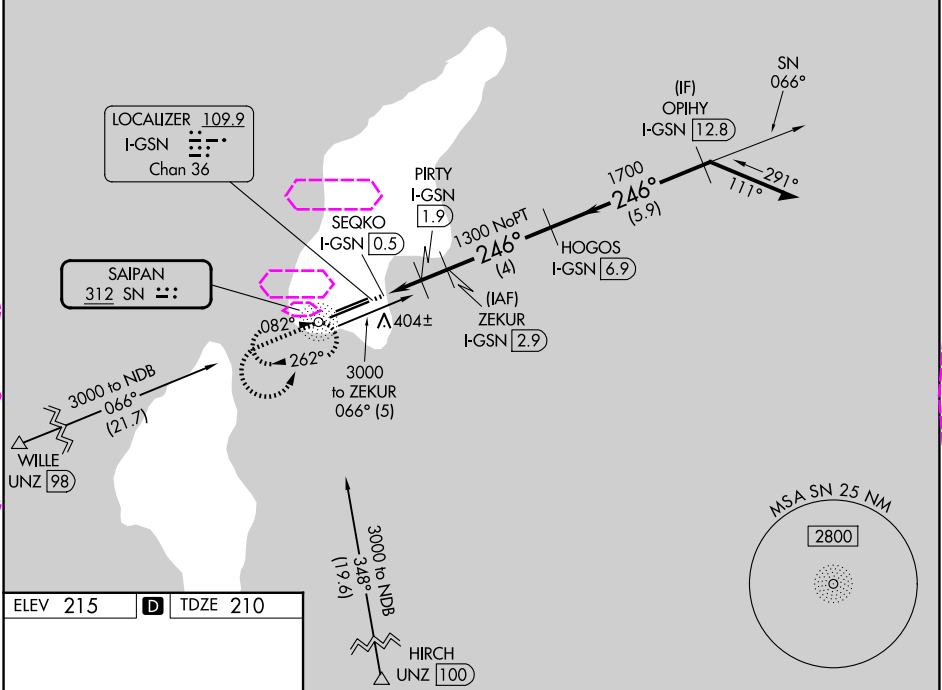
NDB RWY 25

FRANCISCO C ADA/SAIPAN INTL (GSN)(PGSN)

<p>⚠ Circling NA north of Rwy 6-24. Rwy 25 helicopter visibility reduction below ¾ SM NA. DME required.</p>	<p>MISSED APPROACH: Climb to 2000 then climbing left turn to 2800 direct SN NDB and hold.</p>
--	---

ATIS 127.2	GUAM CERAP 118.4 290.5	SAIPAN TOWER 125.7 256.9	GND CON 121.8
---------------	---------------------------	-----------------------------	------------------

DME REQUIRED



ELEV 215	D	TDZE 210
----------	---	----------

	2000	2800	SN	ZEKUR I-GSN [2.9]	VGSI and descent angles not coincident (VGSI Angle 3.00/TCH 75). Remain within 10 NM			
	3000			PIRTY I-GSN [1.9]	HOGOS I-GSN [6.9]	OPIHY I-GSN [12.8]	246°	2600
				SEQKO I-GSN [0.5]			1700	2600
							1300	
							980	
							3.27° TCH 60	
							0.6 1.4 NM 1 NM 4 NM 5.9 NM	
CATEGORY	A	B	C	D				
S-25	720-1	510 (600-1)	720-1 3/8	510 (600-1 3/8)				
CIRCLING	720-1	505 (600-1)	720-1 1/2	505 (600-1 1/2)	780-2	565 (600-2)		

REIL Rws 7 and 25
HIRL Rwy 7-25
MIRL Rwy 6-24

SAIPAN ISLAND, MP

Amdt 3A 03JAN19

FRANCISCO C ADA/SAIPAN INTL (GSN)(PGSN)

15°07'N-145°44'E

NDB RWY 25

PAC, 07 AUG 2025 to 02 OCT 2025

PAC, 07 AUG 2025 to 02 OCT 2025