

BESSEMER, ALABAMA

AL-6260 (FAA)

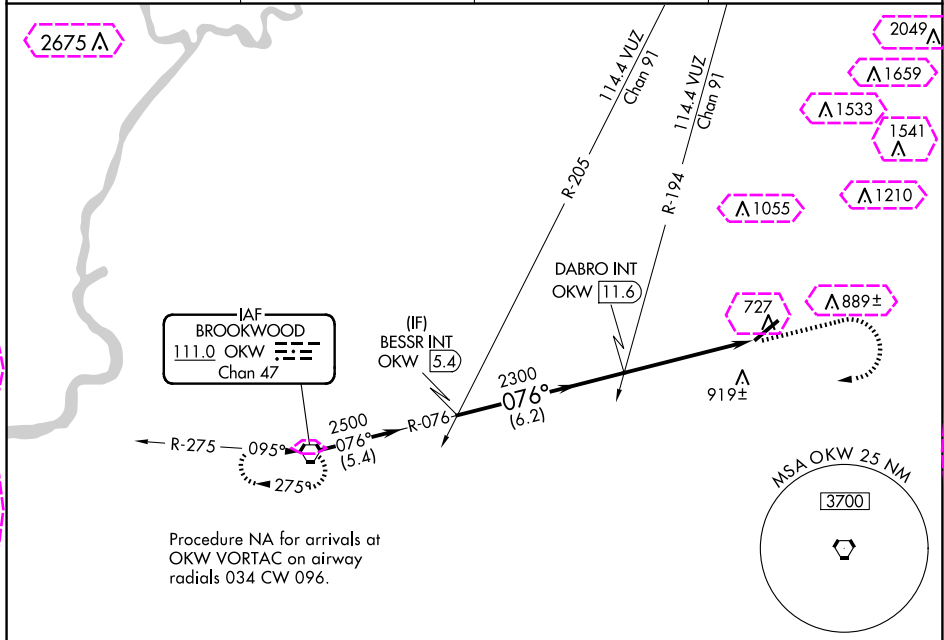
VORTAC OKW	APP CRS	Rwy Idg	6007
111.0	076°	TDZE	700
Chan 47		Apt Elev	700

VOR RWY 5  
BESSEMER (E)KY

21224

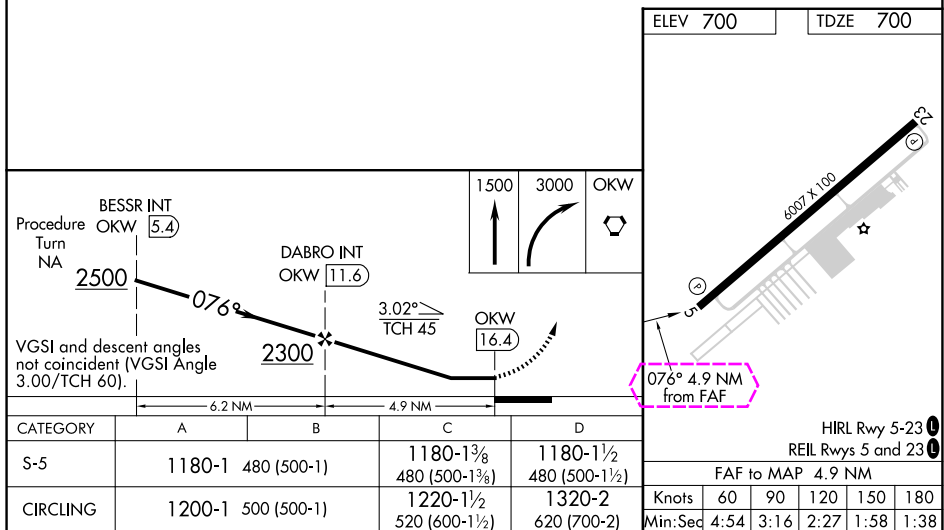
<p>▼ NA</p>	Inoperative table does not apply. When local altimeter setting not received, use Alabaster altimeter setting and increase all MDAs 60 feet; increase S-5 Cat C visibility $\frac{1}{8}$ SM and Circling Cat D visibility $\frac{1}{4}$ SM.	MISSED APPROACH: Climb to 1500 then climbing right turn to 3000 direct OKW VORTAC and hold.
-----------------	--	---

AWOS-3PT 118.825	BIRMINGHAM APP CON 124.9 351.85	CLNC DEL 123.75	UNICOM 123.0 (CTAF) 0
---------------------	------------------------------------	--------------------	--------------------------



SE-4, 10 JUL 2025 to 07 AUG 2025

SE-4, 10 JUL 2025 to 07 AUG 2025



BESSEMER, ALABAMA

Amdt 6B 12AUG21

33°19'N-86°56'W

BESSEMER (E)KY  
VOR RWY 5

BESSEMER, ALABAMA

AL-6260 (FAA)

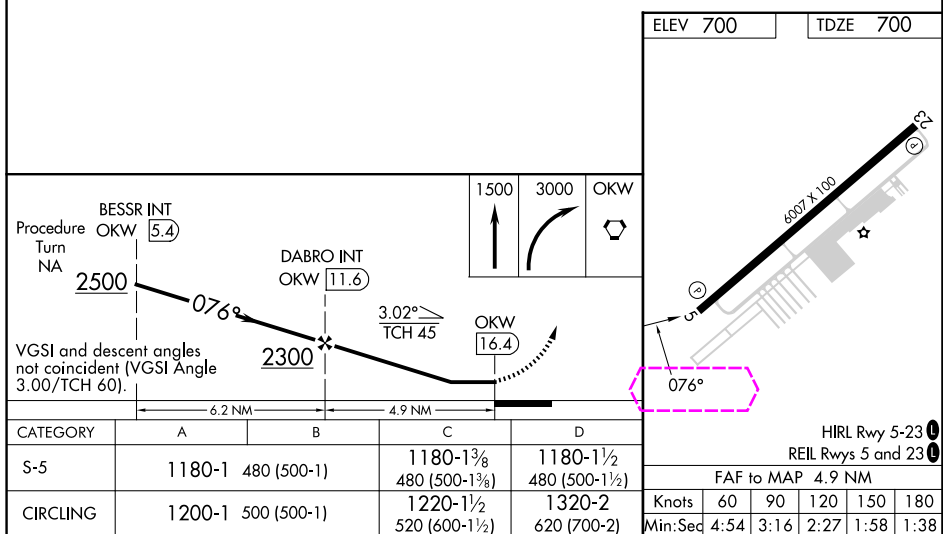
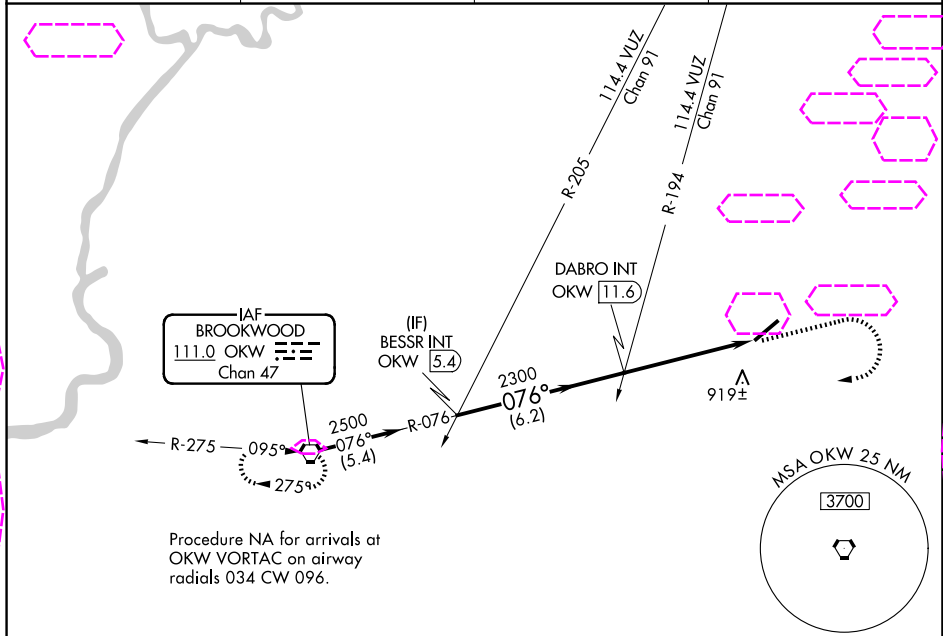
25219

VORTAC OKW <b>111.0</b> Chan <b>47</b>	APP CRS <b>076°</b>	Rwy Ldg TDZE <b>700</b> Apt Elev <b>700</b>
--	------------------------	---

**VOR RWY 5**  
BESSEMER NTL (EKY)

<b>NA</b> Inoperative table does not apply. When local altimeter setting not received, use Alabaster altimeter setting and increase all MDAs 60 feet; increase S-5 Cat C visibility $\frac{1}{8}$ SM and Circling Cat D visibility $\frac{1}{4}$ SM.	MISSED APPROACH: Climb to 1500 then climbing right turn to 3000 direct OKW VORTAC and hold.
---	---

AWOS-3PT <b>118.825</b>	BIRMINGHAM APP CON <b>124.9 351.85</b>	CLNC DEL <b>123.75</b>	UNICOM <b>123.0 (CTAF) 0</b>
----------------------------	---	---------------------------	---------------------------------



BESSEMER, ALABAMA

Amdt 6B 12AUG21

33°19'N-86°56'W

**BESSEMER NTL (EKY)**  
**VOR RWY 5**