

BESSEMER, ALABAMA

AL-6260 (FAA)

21224

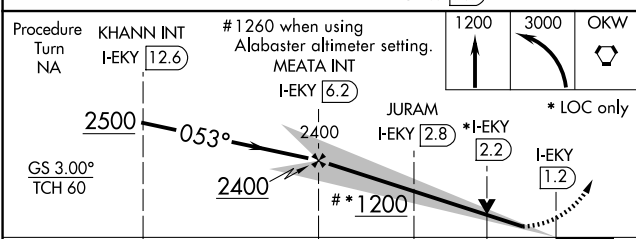
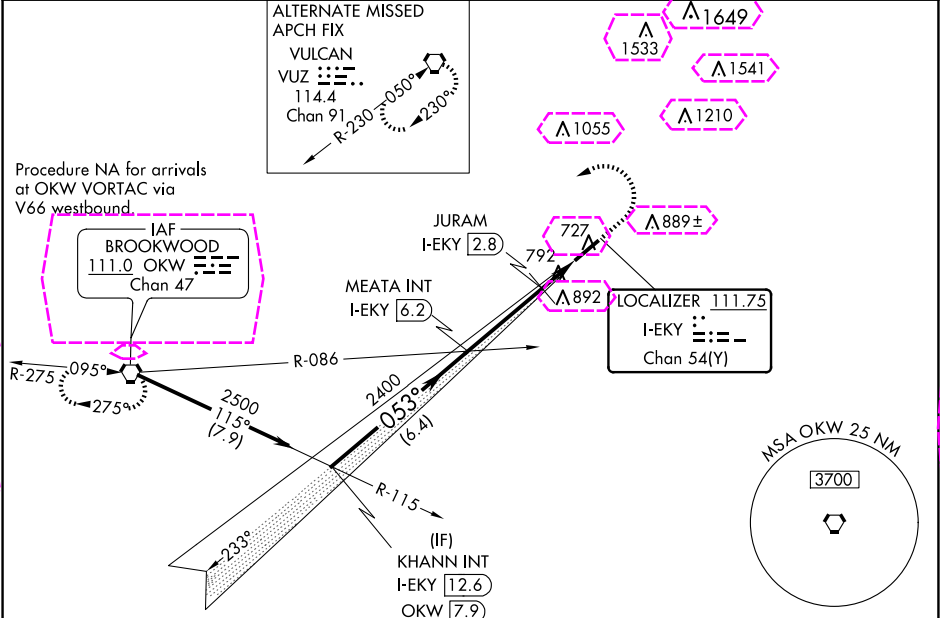
LOC/DME I-EKY <b>111.75</b> Chan <b>54</b> (Y)	APP CRS <b>053°</b>	Rwy Idg TDZE Apt Elev <b>6007</b> <b>700</b> <b>700</b>
--	------------------------	--

ILS or LOC RWY 5  
BESSEMER (EKY)

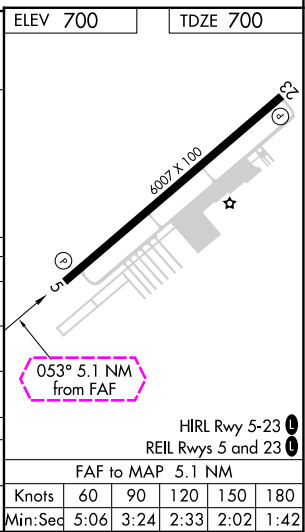
**NA** When local altimeter setting not received, use Alabaster altimeter setting and increase DA 41 feet, increase all MDAs 60 feet; increase S-LOC 5 Cat C visibility  $\frac{1}{8}$  SM and Cat D visibility  $\frac{1}{4}$  SM, increase Circling Cat C visibility  $\frac{1}{8}$  SM Cat D visibility  $\frac{1}{4}$  SM, increase JURAM fix S-LOC 5 Cat C visibility  $\frac{1}{8}$  SM and Cat D visibility  $\frac{1}{4}$  SM; increase Circling Cat D visibility  $\frac{1}{4}$  SM. VDP NA with Alabaster altimeter setting.

MISSED APPROACH: Climb to 1200 then climbing left turn to 3000 direct OKW VORTAC and hold.

AWOS-3PT <b>118.825</b>	BIRMINGHAM APP CON <b>124.9 351.85</b>	CLNC DEL <b>123.75</b>	UNICOM <b>123.0</b> (CTAF) <b>0</b>
----------------------------	---	---------------------------	--



CATEGORY	A	B	C	D
S-ILS 5	900- $\frac{3}{4}$ 200 (200- $\frac{3}{4}$ )			
S-LOC 5	1200-1	500 (500-1)	1200- $1\frac{3}{8}$ 500 (500- $1\frac{1}{8}$ )	1200- $1\frac{1}{2}$ 500 (500- $1\frac{1}{2}$ )
CIRCLING	1200-1	500 (500-1)	1220- $1\frac{1}{2}$ 520 (600- $1\frac{1}{2}$ )	1320-2 620 (700-2)
JURAM FIX MINIMUMS				
S-LOC 5	1100-1	400 (400-1)	1100- $1\frac{1}{8}$ 400 (400- $1\frac{1}{8}$ )	1100- $1\frac{1}{4}$ 400 (400- $1\frac{1}{4}$ )
CIRCLING	1200-1	500 (500-1)	1220- $1\frac{1}{2}$ 520 (600- $1\frac{1}{2}$ )	1320-2 620 (700-2)



BESSEMER, ALABAMA  
Amdt 2B 12AUG21

33°19'N-86°56'W

BESSEMER (EKY)  
ILS or LOC RWY 5

SE-4, 10 JUL 2025 to 07 AUG 2025

SE-4, 10 JUL 2025 to 07 AUG 2025

BESSEMER, ALABAMA

AL-6260 (FAA)

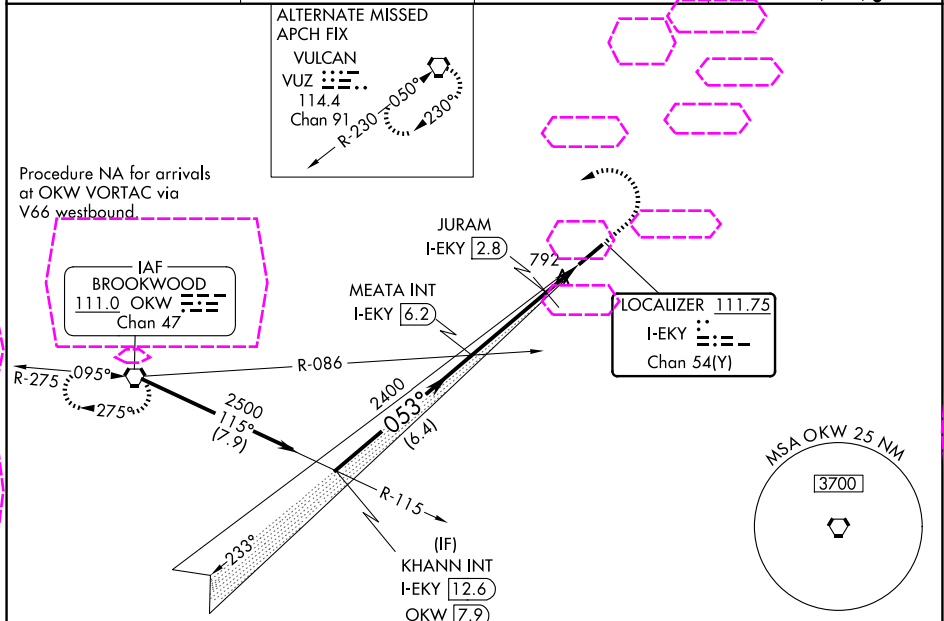
25219

LOC/DME I-EKY <b>111.75</b> Chan <b>54</b> (Y)	APP CRS <b>053°</b>	Rwy Ldg TDZE Apt Elev <b>6007</b> <b>700</b> <b>700</b>
--	------------------------	--

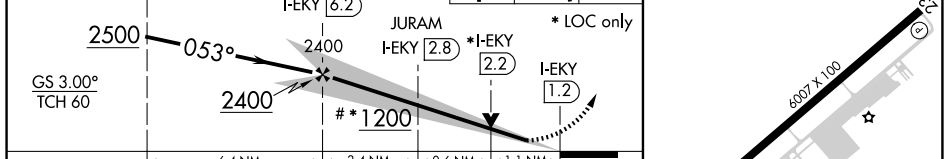
ILS or LOC RWY 5  
BESSEMER NTL (EKY)

NA When local altimeter setting not received, use Alabaster altimeter setting and increase DA 41 feet, increase all MDAs 60 feet; increase S-LOC 5 Cat C visibility $\frac{1}{8}$ SM and Cat D visibility $\frac{1}{4}$ SM, increase Circling Cat C visibility $\frac{1}{8}$ SM Cat D visibility $\frac{1}{4}$ SM, increase JURAM fix S-LOC 5 Cat C visibility $\frac{1}{8}$ SM and Cat D visibility $\frac{1}{4}$ SM; increase Circling Cat D visibility $\frac{1}{4}$ SM. VDP NA with Alabaster altimeter setting.	MISSED APPROACH: Climb to 1200 then climbing left turn to 3000 direct OKW VORTAC and hold.
---	--

AWOS-3PT <b>118.825</b>	BIRMINGHAM APP CON <b>124.9 351.85</b>	CLNC DEL <b>123.75</b>	UNICOM <b>123.0</b> (CTAF)
----------------------------	---	---------------------------	-------------------------------



Procedure Turn NA	KHANN INT I-EKY [12.6]	# 1260 when using Alabaster altimeter setting.	MEATA INT I-EKY [6.2]	JURAM I-EKY [2.8]	* I-EKY [2.2]	I-EKY [1.2]	ELEV 700	TDZE 700



CATEGORY	A	B	C	D
S-ILS 5	900- $\frac{3}{4}$ 200 (200- $\frac{3}{4}$ )			
S-LOC 5	1200-1	500 (500-1)	1200- $1\frac{3}{8}$ 500 (500- $1\frac{3}{8}$ )	1200- $1\frac{1}{2}$ 500 (500- $1\frac{1}{2}$ )
CIRCLING	1200-1	500 (500-1)	1220- $1\frac{1}{2}$ 520 (600- $1\frac{1}{2}$ )	1320-2 620 (700-2)
JURAM FIX MINIMUMS				
S-LOC 5	1100-1	400 (400-1)	1100- $1\frac{1}{8}$ 400 (400- $1\frac{1}{8}$ )	1100- $1\frac{1}{4}$ 400 (400- $1\frac{1}{4}$ )
CIRCLING	1200-1	500 (500-1)	1220- $1\frac{1}{2}$ 520 (600- $1\frac{1}{2}$ )	1320-2 620 (700-2)
HIRL Rwy 5-23 REIL Rwy 5 and 23				
FAF to MAP 5.1 NM				
Knots 60 90 120 150 180 Min:Sec 5:06 3:24 2:33 2:02 1:42				

BESSEMER, ALABAMA  
Amdt 2B 12AUG21

33°19'N-86°56'W

BESSEMER NTL (EKY)  
ILS or LOC RWY 5

SE-4, 07 AUG 2025 to 04 SEP 2025

SE-4, 07 AUG 2025 to 04 SEP 2025