

LACON, ILLINOIS

AL-6240 (FAA)

22307

WAAS CH 66035 W13A	APP CRS 129°	Rwy Idg 4003 TDZE 564 Apt Elev 585
--	------------------------	---

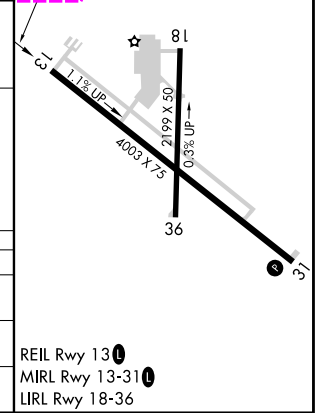
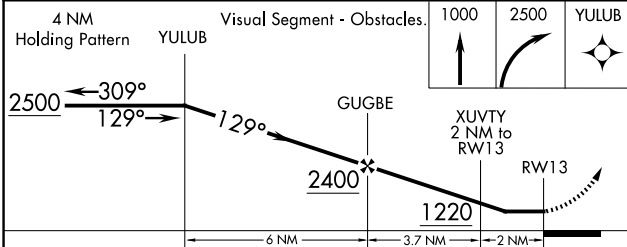
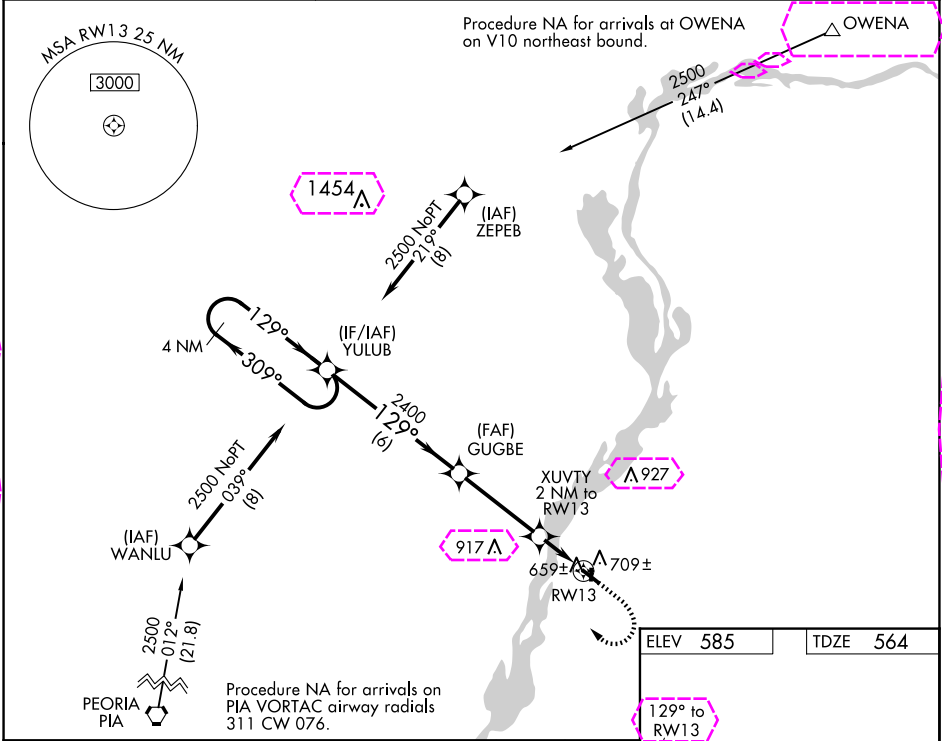
RNAV (GPS) RWY 13

MARSHALL COUNTY (C75)

⚠ DME/DME RNP-0.3 NA. Helicopter visibility reduction below $\frac{3}{4}$ SM NA. When local altimeter setting not received, use Peru altimeter setting and increase all MDA 80 feet and increase LP and Circling Cat C visibilities $\frac{1}{4}$ mile and LNAV Cat C visibility $\frac{1}{8}$ mile. Night landing: Rwy 18, 31, 36 NA.

MISSSED APPROACH: Climb to 1000 then climbing right turn to 2500 direct YULUB and hold.

AWOS-3 119.425	CHICAGO CENTER 124.55 307.125	UNICOM 122.8 (CTAF) 0
--------------------------	---	---------------------------------



CATEGORY	A	B	C	D
LP MDA	920-1	356 (400-1)	920-1 $\frac{1}{8}$ 356 (400-1 $\frac{1}{8}$)	NA
LNAV MDA	960-1	396 (400-1)	960-1 $\frac{1}{4}$ 396 (400-1 $\frac{1}{4}$)	NA
CIRCLING	1100-1	515 (600-1)	1200-1 $\frac{3}{4}$ 615 (700-1 $\frac{3}{4}$)	NA

REIL Rwy 13 0
MIRL Rwy 13-31 0
LIRL Rwy 18-36

EC-3, 10 JUL 2025 to 07 AUG 2025

EC-3, 10 JUL 2025 to 07 AUG 2025

LACON, ILLINOIS

AL-6240 (FAA)

25219

WAAS CH 66035 W13A	APP CRS 129°	Rwy Ldg 4003 TDZE 564 Apt Elev 585
--	------------------------	---

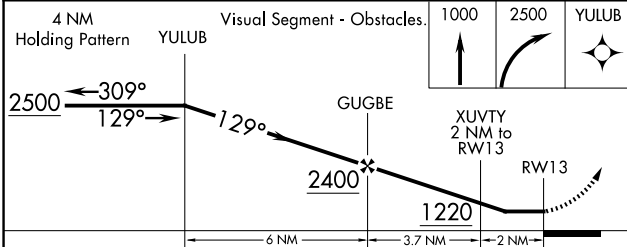
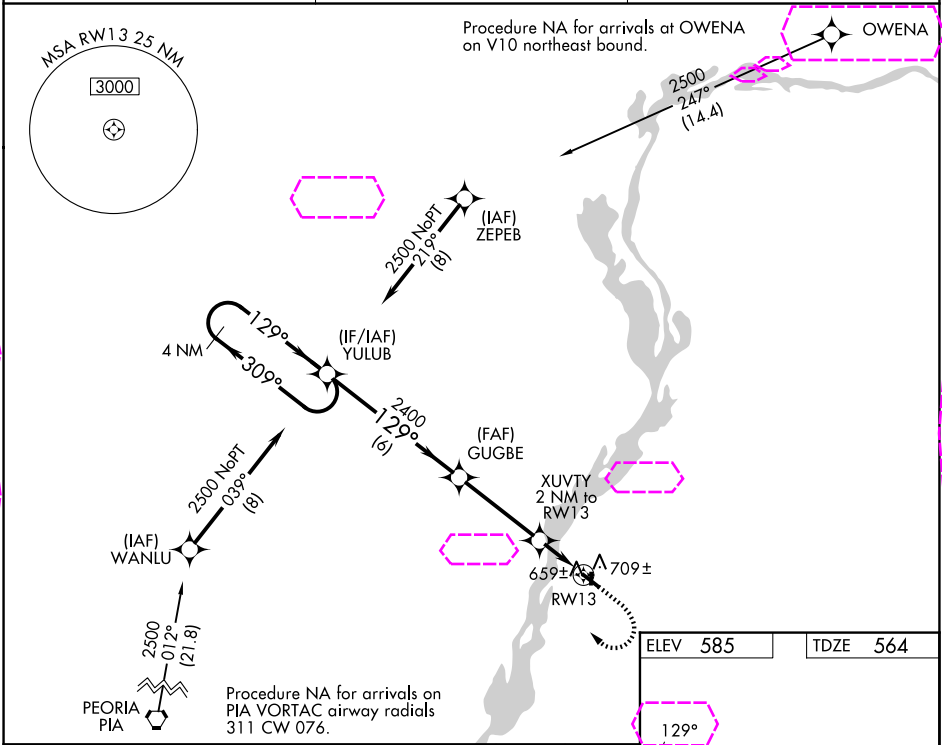
RNAV (GPS) RWY 13

MARSHALL COUNTY (C75)

⚠ DME/DME RNP-0.3 NA. Helicopter visibility reduction below ¾ SM NA. When local altimeter setting not received, use Peru altimeter setting and increase all MDA 80 feet and increase LP and Circling Cat C visibilities ¼ mile and LNAV Cat C visibility ½ mile. Night landing: Rwy 18, 31, 36 NA.

MISSED APPROACH: Climb to 1000 then climbing right turn to 2500 direct YULUB and hold.

AWOS-3 119.425	CHICAGO CENTER 124.55 307.125	UNICOM 122.8 (CTAF) 0
--------------------------	---	---------------------------------



CATEGORY	A	B	C	D
LP MDA	920-1	356 (400-1)	920-1 1/8 356 (400-1 1/8)	NA
LNAV MDA	960-1	396 (400-1)	960-1 1/4 396 (400-1 1/4)	NA
CIRCLING	1100-1	515 (600-1)	1200-1 3/4 615 (700-1 3/4)	NA

